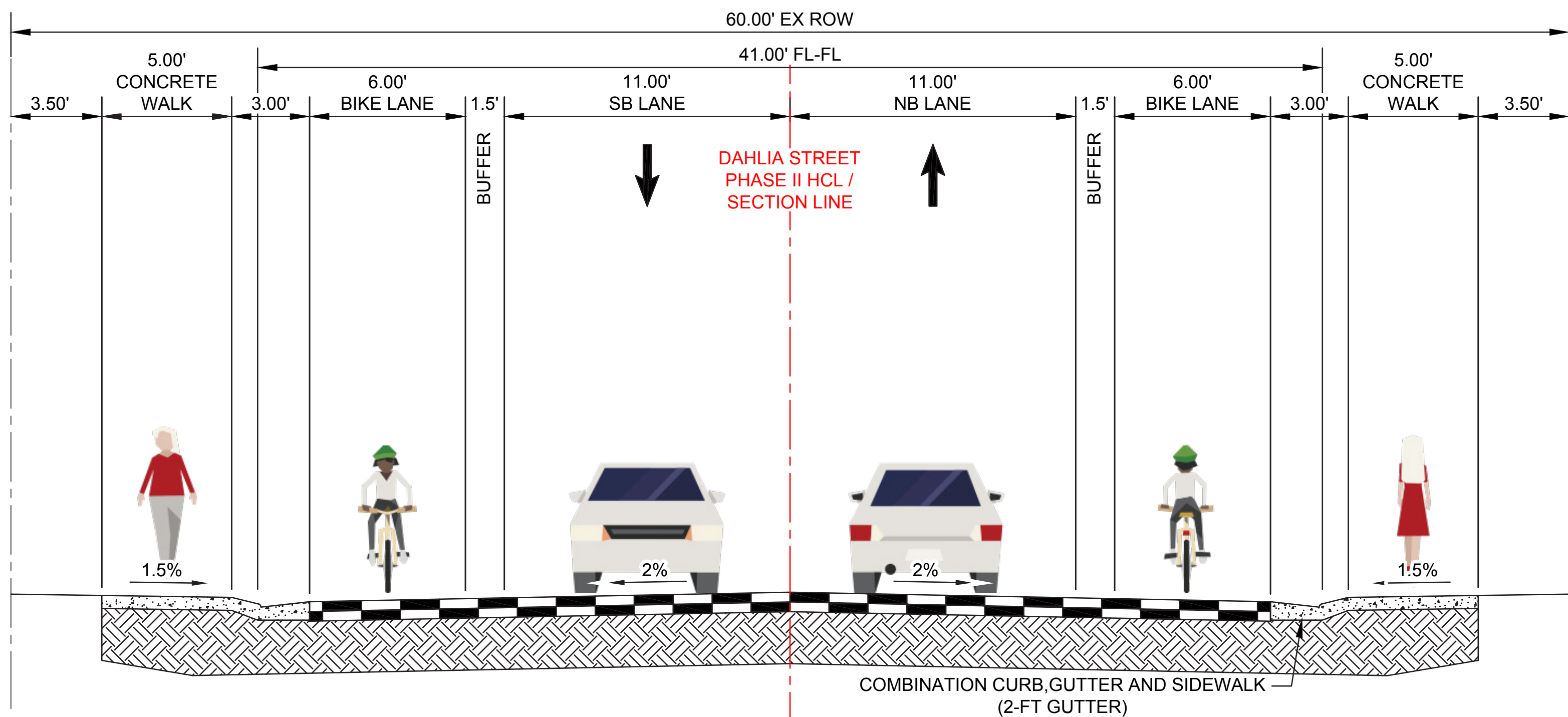
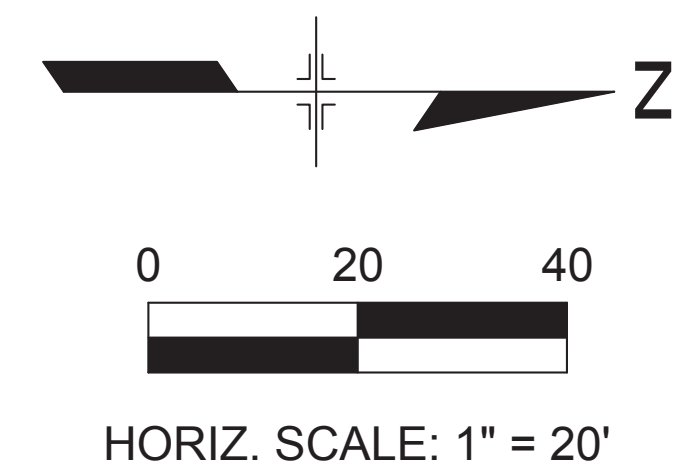


- 1** Attached Concrete Sidewalk
- 2** Street Lighting (Location To Be Determined)
- 3** Drainage Improvement – Curb and Gutter with Inlets



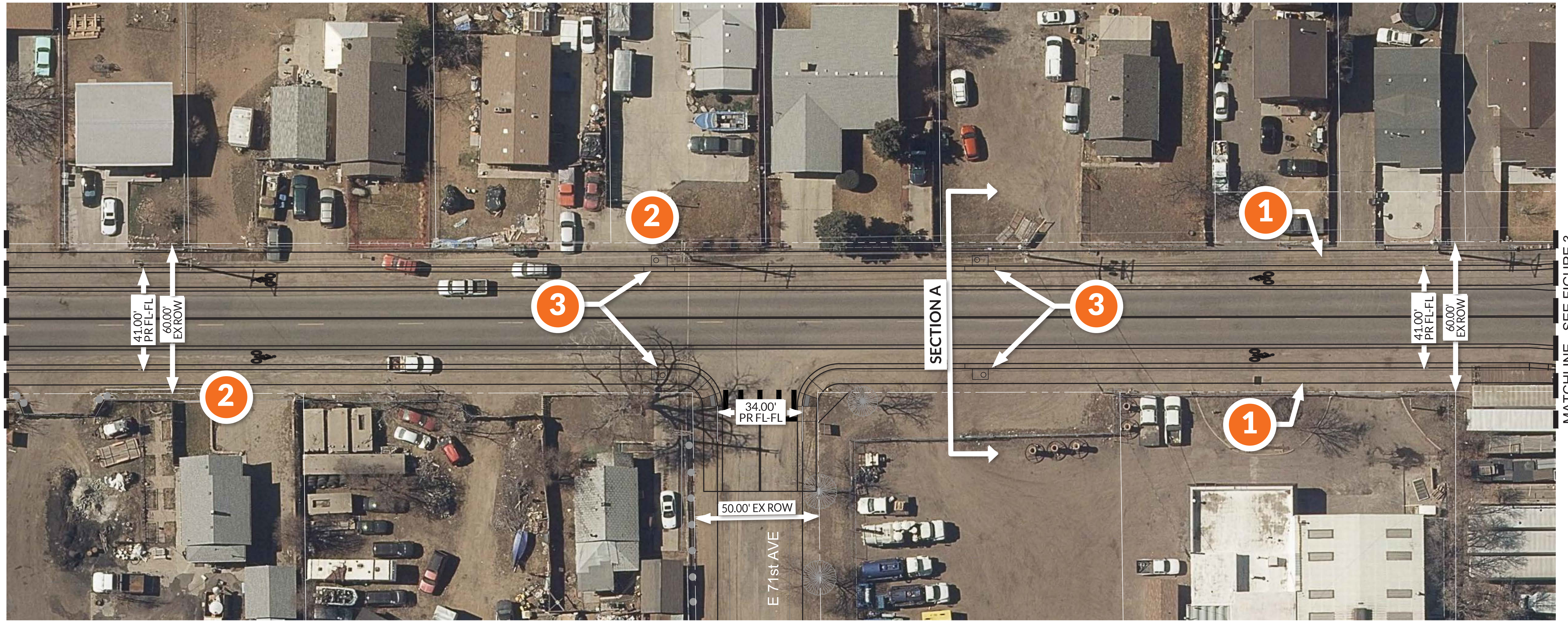
TYPICAL SECTION A: 72nd Ave to 72nd Ave

Dahlia Street Phase II (South Segment – 1 of 3)

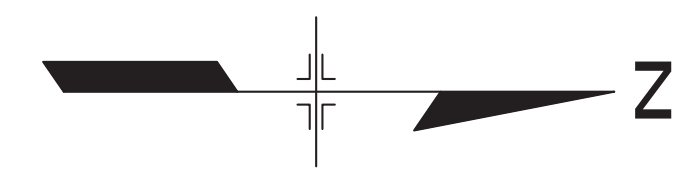


MATCHLINE - SEE FIGURE 1

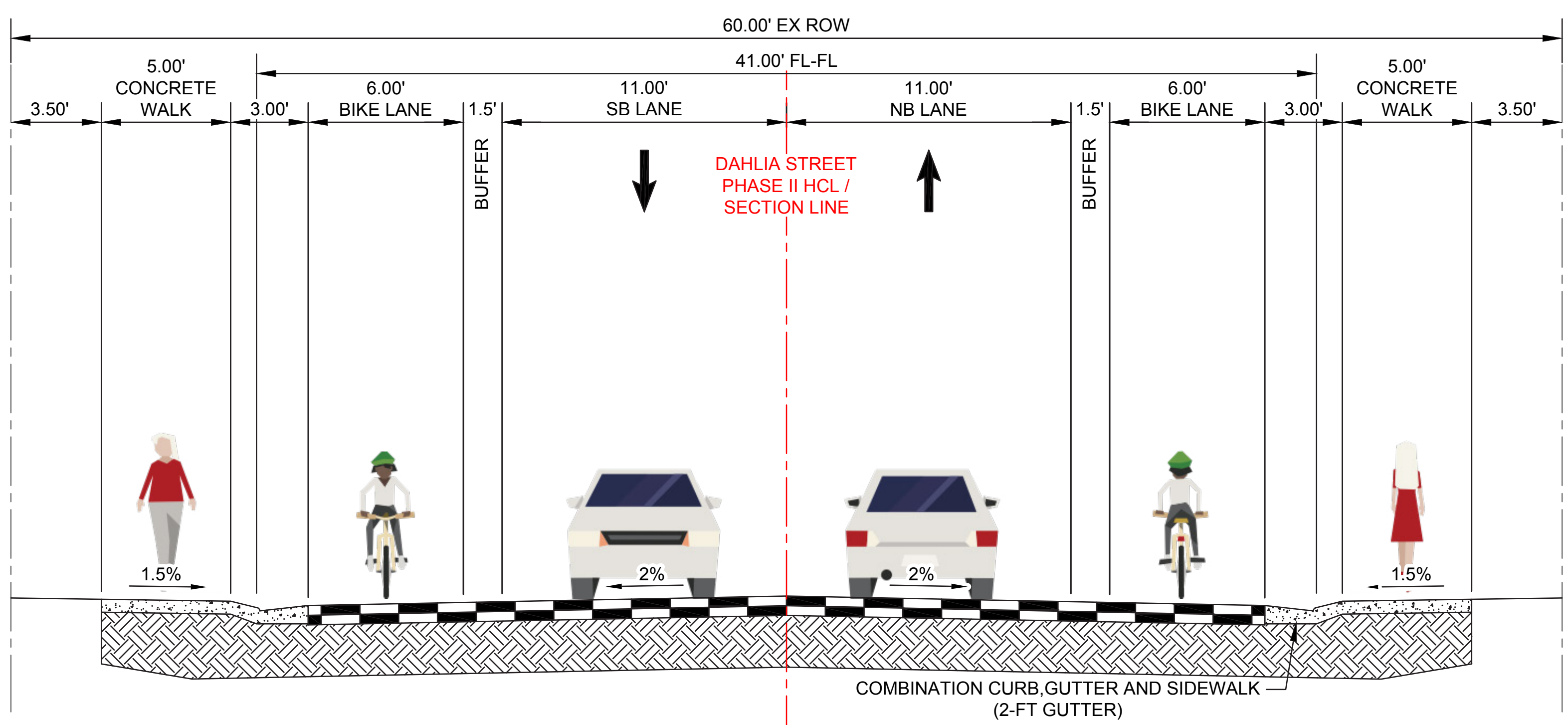
MATCHLINE - SEE FIGURE 3



- 1 Attached Concrete Sidewalk
- 2 Street Lighting (Location To Be Determined)
- 3 Drainage Improvement – Curb and Gutter with Inlets with Inlets



HORIZ. SCALE: 1" = 20'



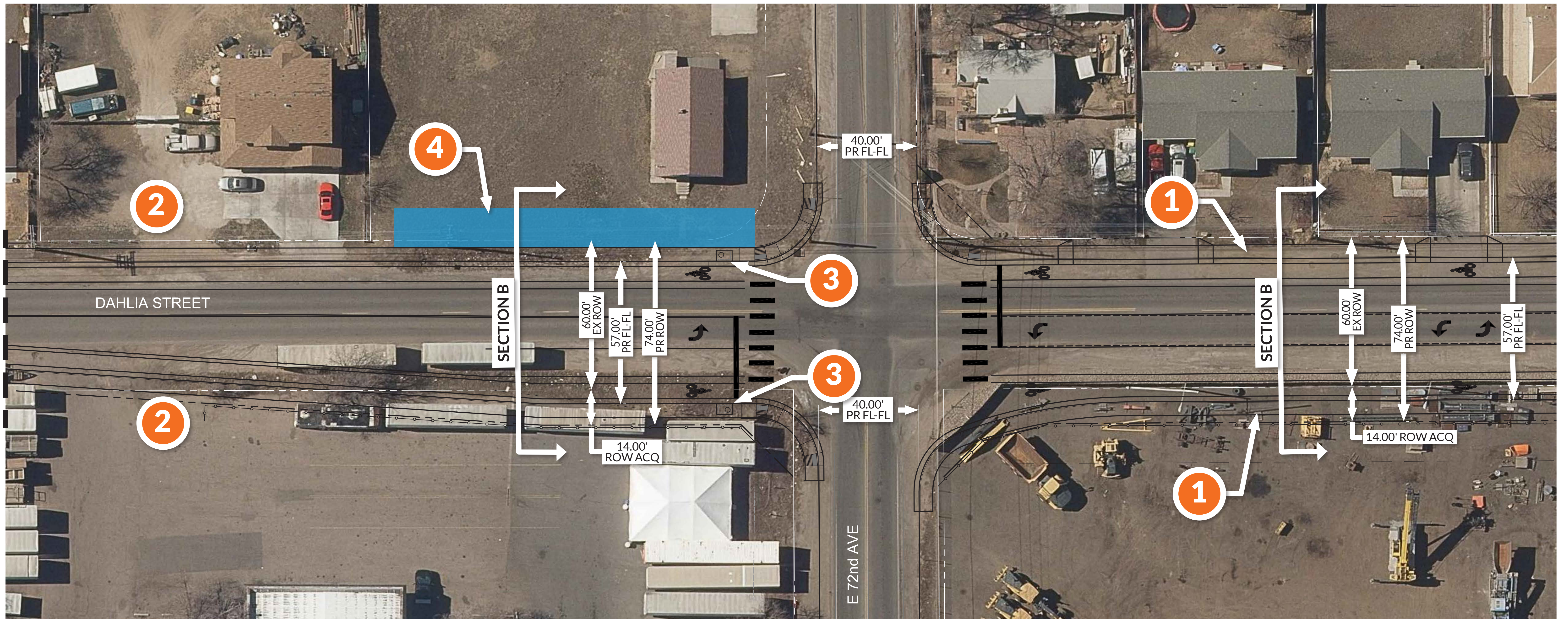
TYPICAL SECTION A: 70th Ave to 72nd Ave

Dahlia Street Phase II

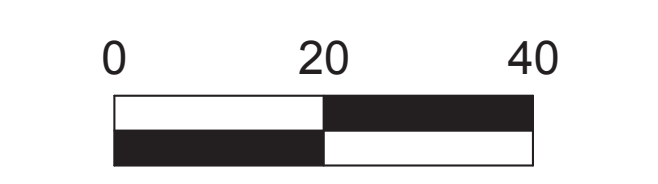
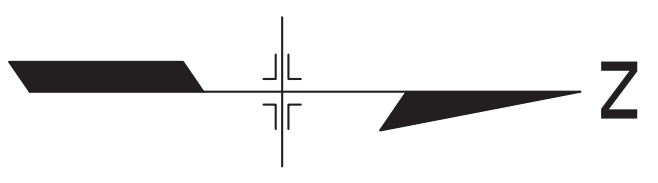
(South Segment – 2 of 3)



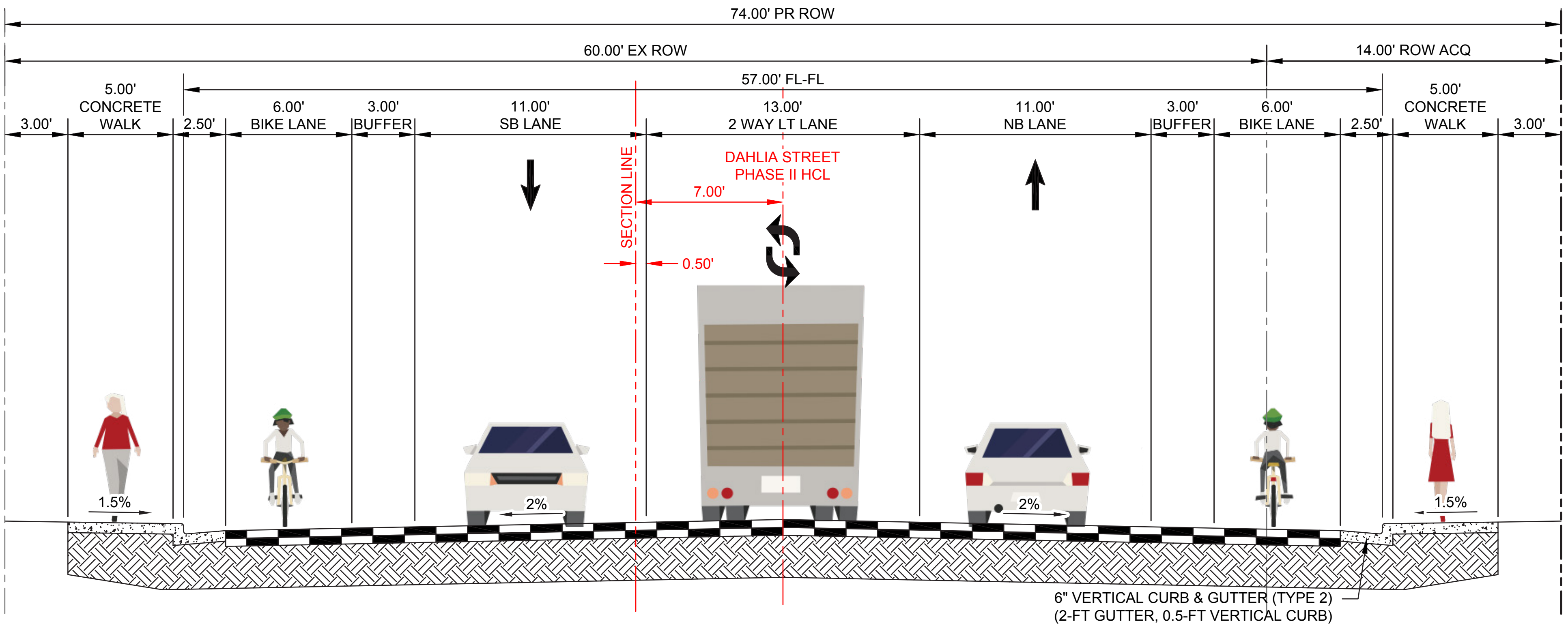
MATCHLINE - SEE FIGURE 2



- 1** Attached Concrete Sidewalk
- 2** Street Lighting (Location To Be Determined)
- 3** Drainage Improvement – Curb and Gutter with Inlets
- 4** Water Quality Feature (Being Studied)



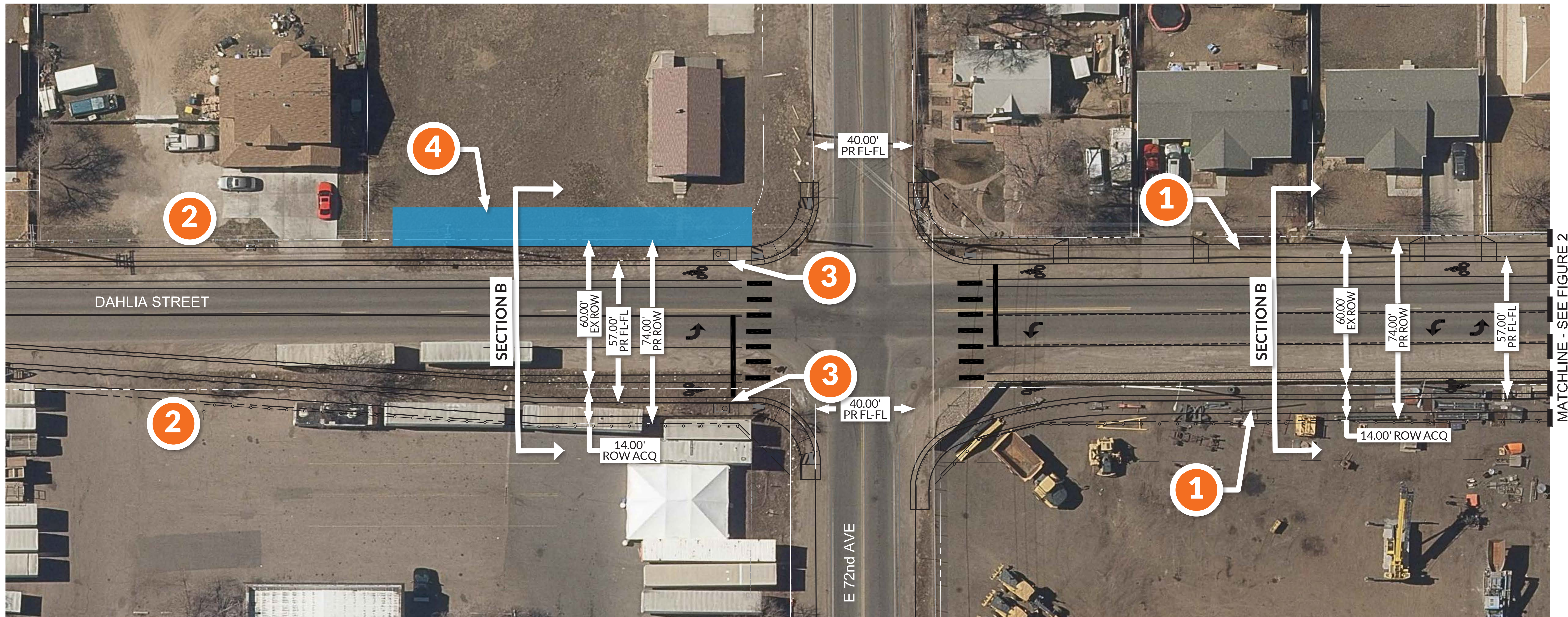
HORIZ. SCALE: 1" = 20'



TYPICAL SECTION B: 72nd Ave to 73rd Place

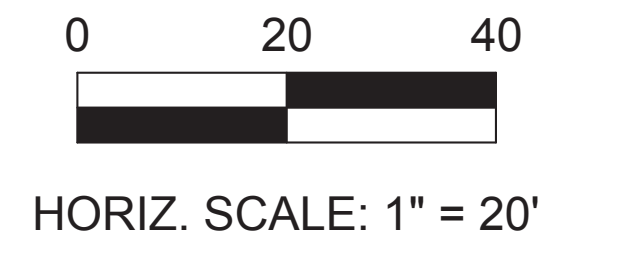
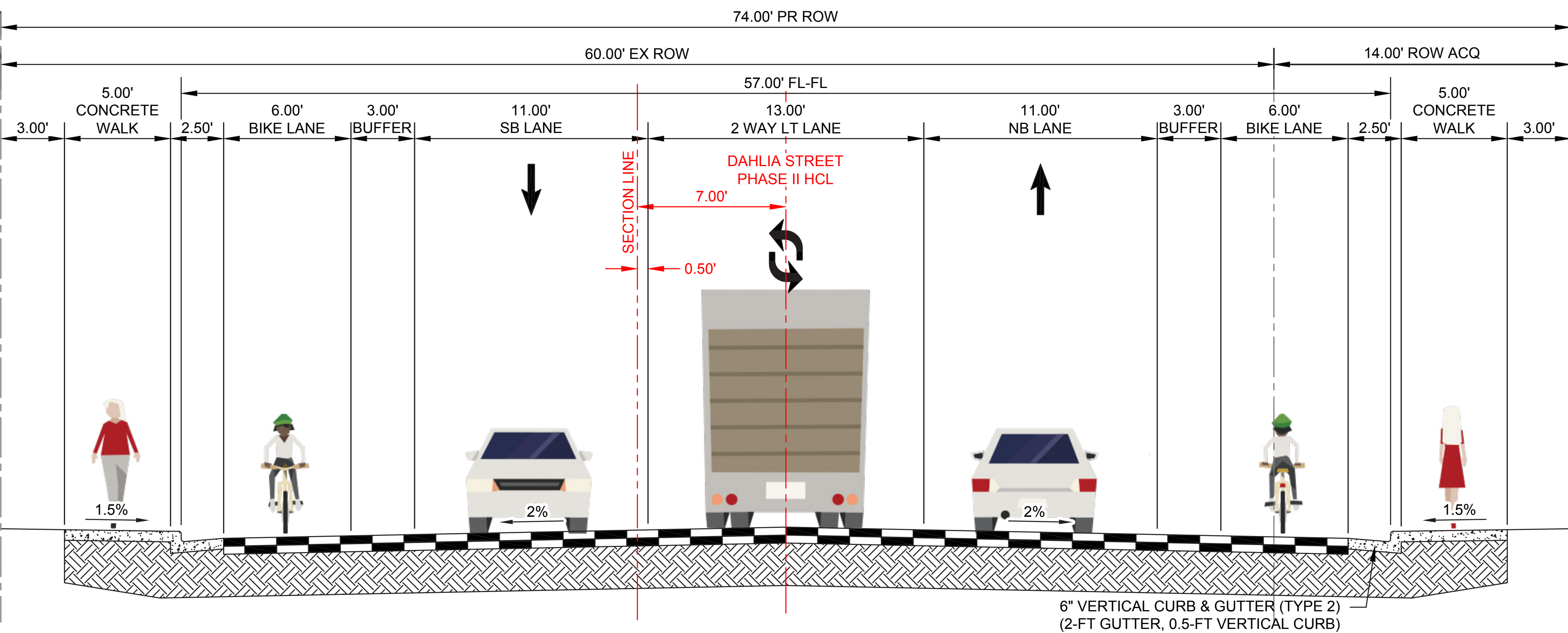
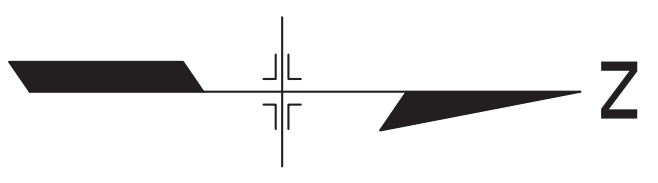
Dahlia Street Phase II (South Segment – 3 of 3)





MATCHLINE - SEE FIGURE 2

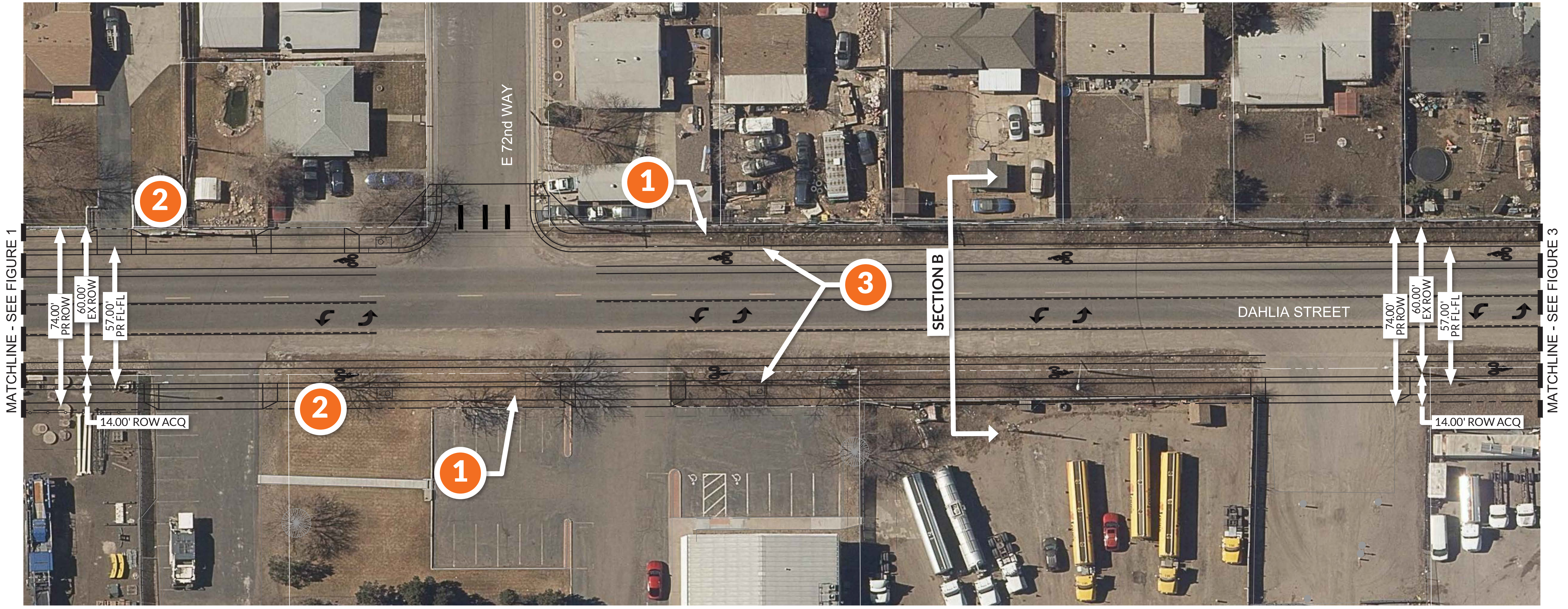
- 1 Attached Concrete Sidewalk
- 2 Street Lighting (Location To Be Determined)
- 3 Drainage Improvement – Curb and Gutter with Inlets
- 4 Water Quality Feature (Being Studied)



TYPICAL SECTION B: 72nd Ave to 73rd Place

Dahlia Street Phase II (North Segment – 1 of 3)

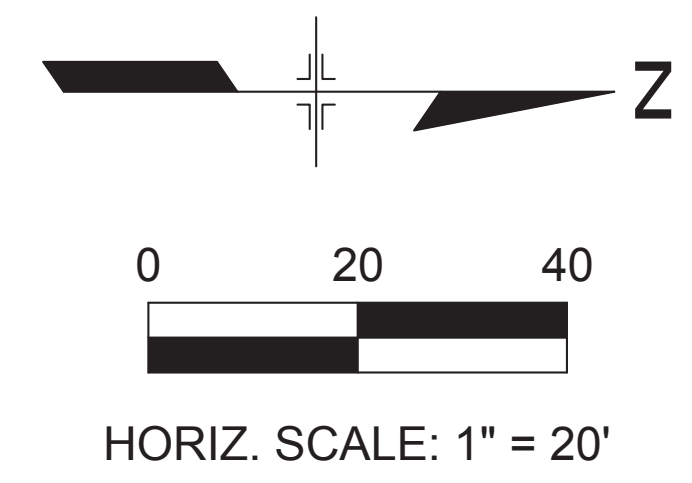
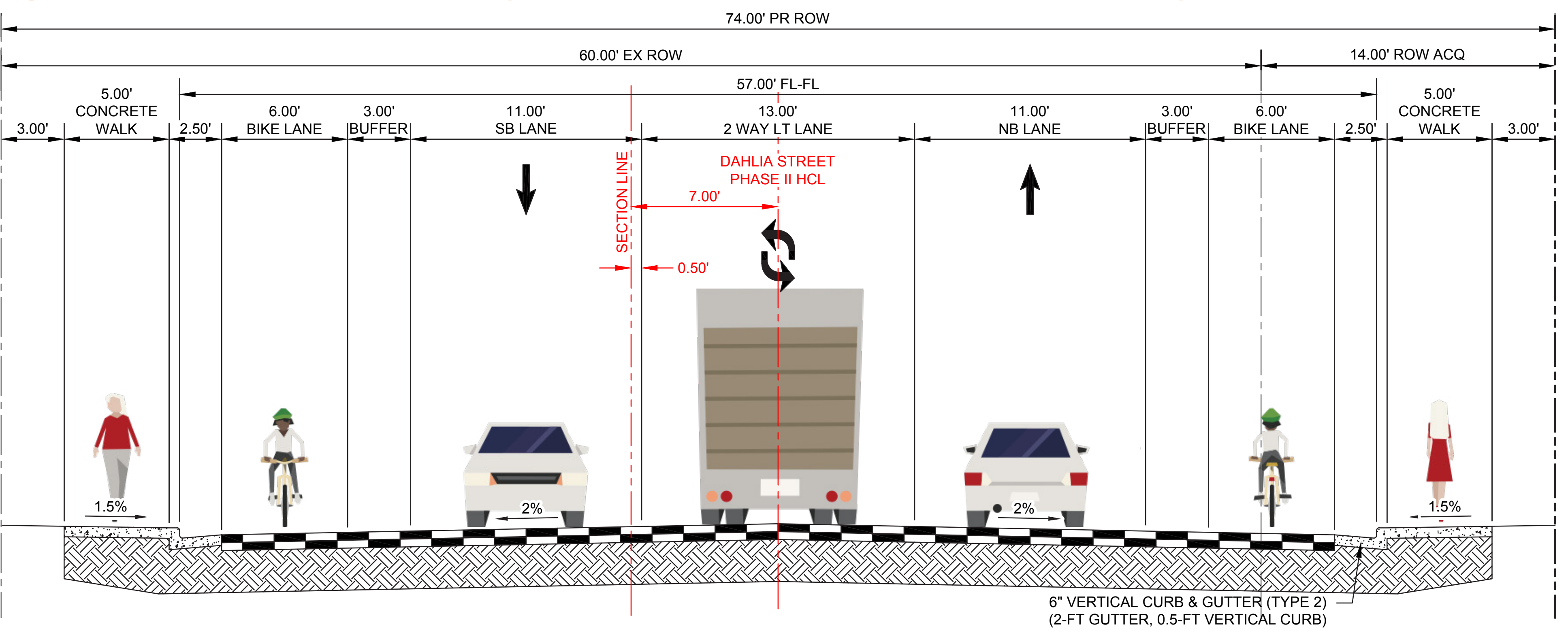




MATCHLINE - SEE FIGURE 1

MATCHLINE - SEE FIGURE 3

- 1 Attached Concrete Sidewalk
- 2 Street Lighting (Location To Be Determined)
- 3 Drainage Improvement – Curb and Gutter with Inlets

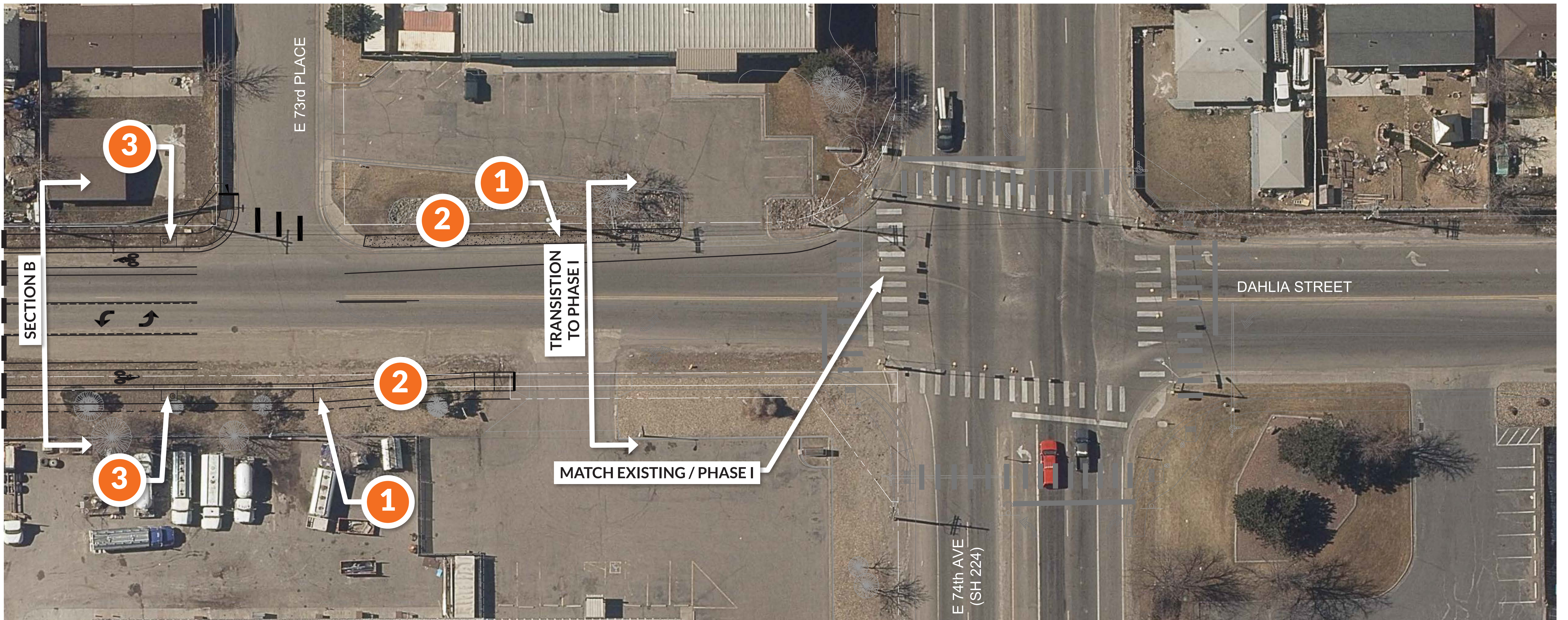


TYPICAL SECTION B: 72nd Ave to 73rd Place

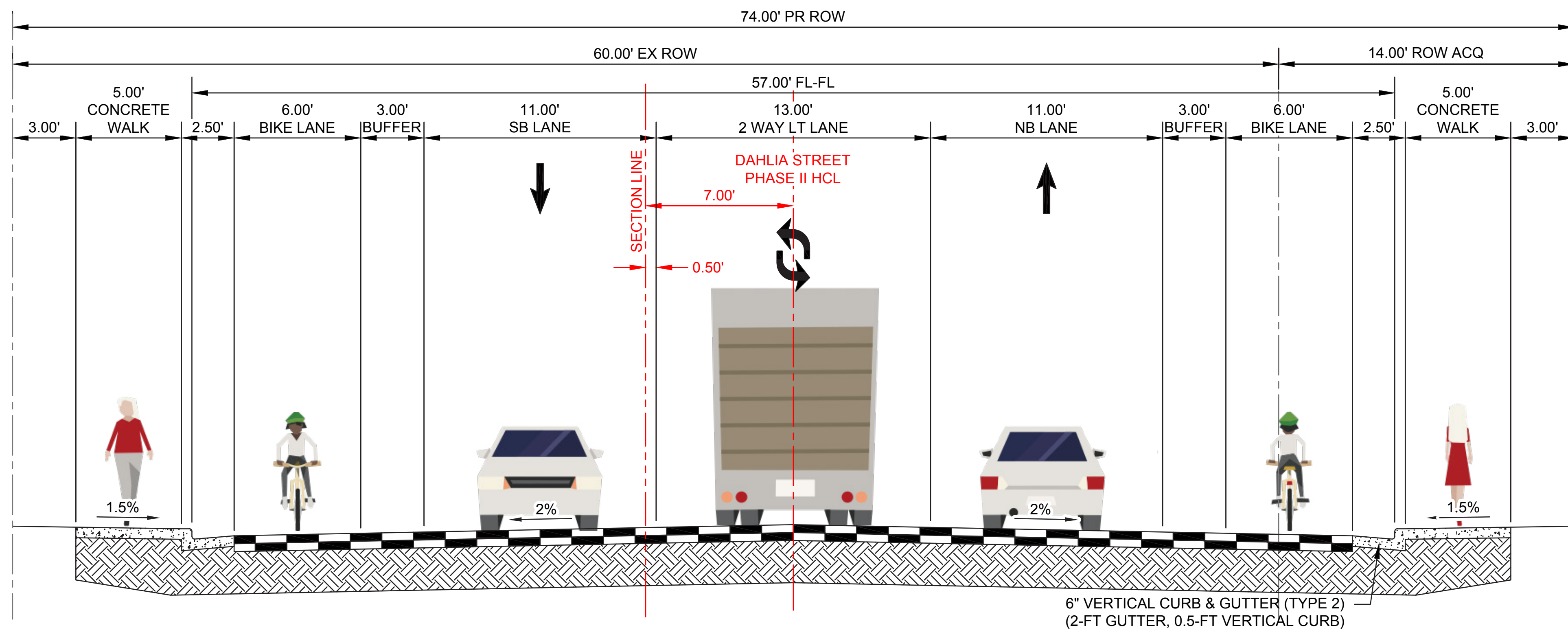
Dahlia Street Phase II (North Segment – 2 of 3)



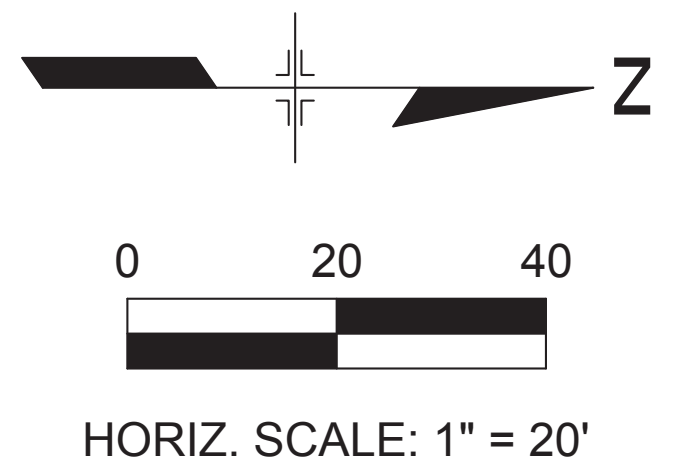
MATCHLINE - SEE FIGURE 2



- 1** Attached Concrete Sidewalk
- 2** Street Lighting (Location To Be Determined)
- 3** Drainage Improvement – Curb and Gutter with Inlets



TYPICAL SECTION B: 72nd Ave to 73rd Place



Dahlia Street Phase II

(North Segment – 3 of 3)



What We Heard

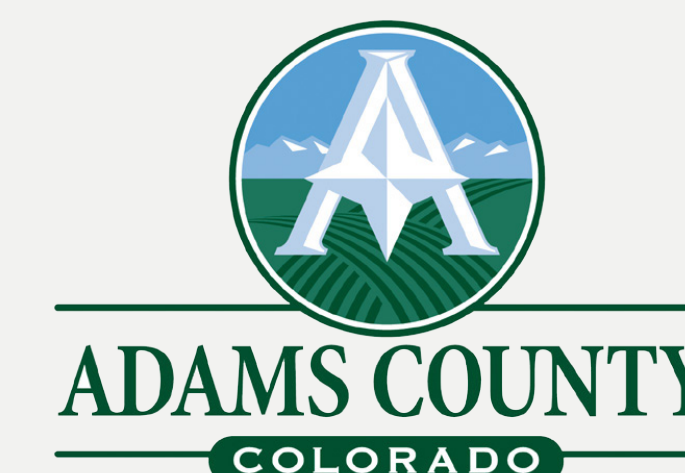
In Favor of:

- ✓ Street lighting
- ✓ Speed reduction (speed bumps)
- ✓ Sidewalks
- ✓ Landscaping (Greenery)
- ✓ Dahlia St at 72nd Ave Traffic Signal (pedestrian crossing)
- ✓ Privacy fence (noise reduction, separation)
- ✓ Roadway widening
- ✓ Dahlia St at 74th Ave northbound exclusive right turn lane
- ✓ Drainage improvements
- ✓ Center turn lane
- ✓ ROW from one side of the roadway, 67% support
- ✓ Improved quality of life, 67%

Do Not Support:

- ✗ Bike lanes
- ✗ ROW acquisition for bike lanes
- ✗ No bike lane connections
- ✗ Center turn lanes
- ✗ ROW acquisition due to limited lot size
- ✗ More traffic or additional lane

Dahlia Street Phase II Public Meeting #2



Envision and Dahlia Street Phase II

What is *Envision*?

Envision is a system of criteria used to guide decision to identify and implement sustainability into civil infrastructure planning, design, construction, as well as operation and maintenance. *Envision* guidelines are implemented on infrastructure projects to meet the **Sustainable Adams County 2030 Plan**.

Why use *Envision*?

Envision provides guidelines and objectives to the County to identify sustainable approaches in project development and implementation.

What does sustainability mean?

The County and the design team will consider the impact and benefits provided by the project on the community and residents in the following categories:

- Environmental
- Social/Human
- Economic

Project Goals using *Envision*

- Engage with the community to understand their needs and desired outcomes of the project to improve the community's quality of life.
- Improve the quality of drainage runoff by removing pollutants from the water.
- Reduce the use of natural resources by using recycled materials and reducing material sent to landfills.

¿Qué es *Envision*?

Envision es un sistema de criterios que se utiliza para guiar la decisión y identificar e implementar la sostenibilidad en la planificación, el diseño, y la construcción, así como también la operación y el mantenimiento de la infraestructura civil. Las directrices de *Envision* son implementadas en proyectos de infraestructura para cumplir con el **Plan 2030 Sostenible del Condado de Adams**.

¿Por qué utilizar *Envision*?

Envision proporciona directrices y objetivos al Condado para identificar enfoques sostenibles en el desarrollo e implementación de proyectos.

¿Qué significa sostenibilidad?

El Condado y el equipo de diseño considerarán el impacto y los beneficios proporcionados por el proyecto en la comunidad y a los residentes en las siguientes categorías:

- Ambiental
- Social/Humano
- Económico

Objetivos del Proyecto utilizando *Envision*

- Involucrarse con la comunidad para comprender sus necesidades y los resultados deseados del proyecto para mejorar la calidad de vida de la comunidad.
- Mejorar la calidad de la escorrentía del desagüe eliminando los contaminantes del agua.
- Reducir el uso de recursos naturales mediante el uso de materiales reciclados y la reducción de material enviado a vertederos.