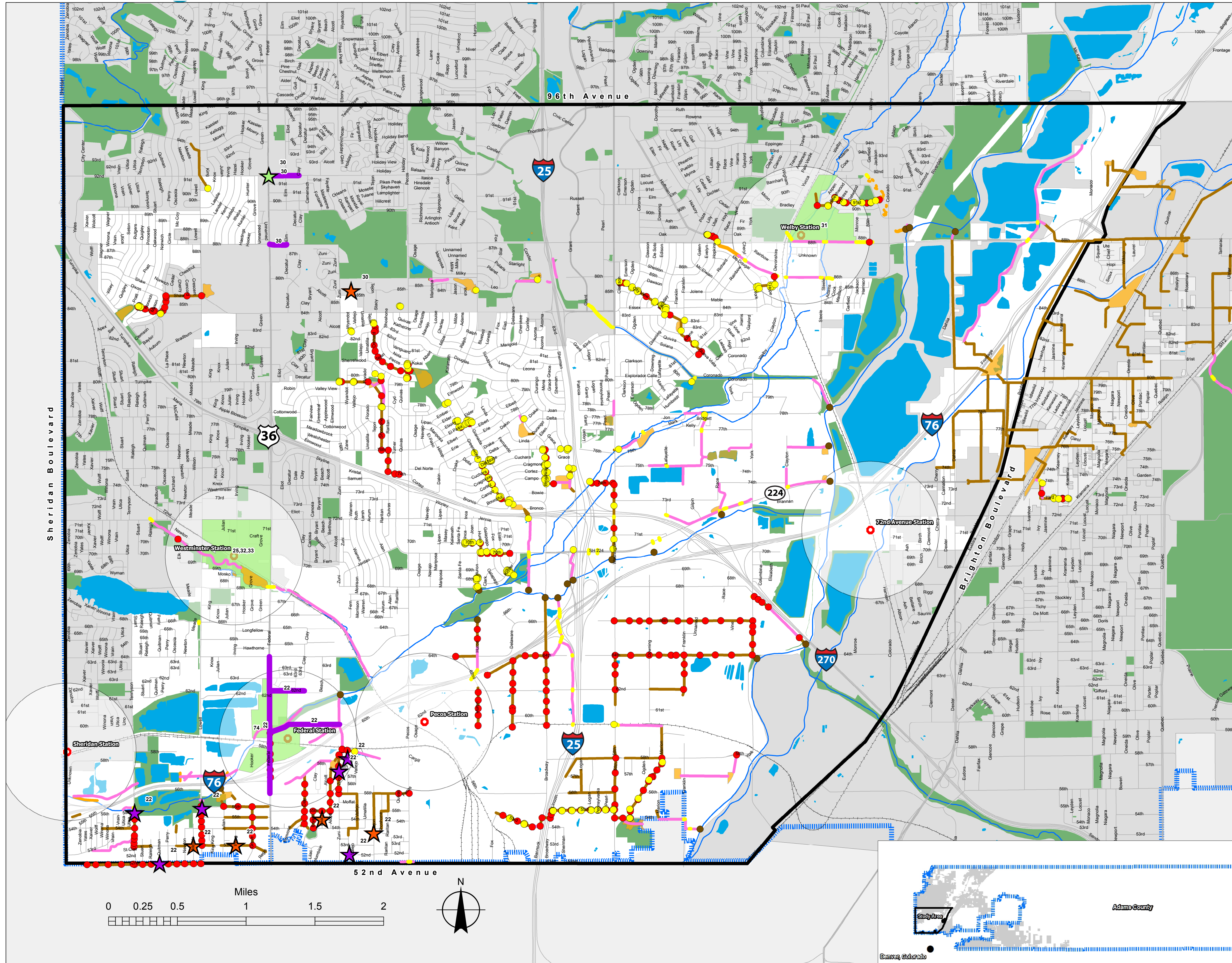


Drainage & Utilities | Drenaje/Servicios públicos



Legend

- Adams County Boundary
 - Study Area Boundary
 - Future Rail Station
 - County Streets
 - County Rivers
 - Waterbody
 - County Rail
 - City Limits
 - Parks
 - Half Mile Radius
 - Proposed Inlets
 - Proposed Manholes
 - Proposed Outfalls
 - Proposed Culverts
 - Proposed Channels
 - Proposed Erosion Protection
 - Proposed Pipes
 - Proposed Ponds
-
- ### Projects Identified in Literature Review
- Sanitary Sewer
 - Storm Water
 - Water
 - Sanitary Sewer
 - Storm Water
 - Water

- Plan ID

Plan ID Key

| Plan ID | Plan/Study/Report Name | Agency |
|---------|---|-------------------------|
| 22 | Southwest Adams County Framework for Future Planning | Adams County |
| 25 | Westminster Station (Commuter Rail)/Station Plaza North | City of Westminster |
| 30 | City of Federal Heights Construction Projects | City of Federal Heights |
| 31 | Original Thornton at 88th Station Area Master Plan | City of Thornton |
| 32 | South Westminster Revitalization | City of Westminster |
| 33 | Westminster Station (71st & Lowell) | City of Westminster |
| 74 | Clear Creek Valley TOD Plan | Adams County |

Policies from Previous Plans

| Plan ID | Plan/Study/Report Name | Policies & Strategies |
|---------|---|---|
| 12 | Imagine Adams County | <ul style="list-style-type: none"> •Boost drainage and flood control capacity. •Protect water supplies. •Ensure proper disposal of solid waste. •Establish regulations for resource extraction. |
| 16 | I-70 Corridor Economic Assessment | <ul style="list-style-type: none"> •Infrastructure: electrical power grid to accommodate the growth; north-south transportation link improvements to accommodate growth; update water and sanitation districts to accommodate growth - as they are currently serviced by wells. |
| 18 | Clear Creek Transit Village Vision Plan | <ul style="list-style-type: none"> • Address floodplain mitigation and land contamination. |
| 19 | Berkeley Neighborhood Plan | <ul style="list-style-type: none"> •Support the Berkeley Water and Sanitation District's efforts to implement its Master Plan. |
| 40 | Westminster Comprehensive Plan | <ul style="list-style-type: none"> •Reduce the amount of stormwater runoff that reaches the city's storm drain system. Maximize permeable area and minimize the amount of runoff flowing toward impermeable. •Conduct annual analysis of projected water supply and demand to ensure the city maintains a balance between supply and demand. Provide an annual water and infrastructure balance report to City Council to document progress and highlight decisions that have integrated land use and development decisions with water supply planning. •Continue to expand the reclaimed water system and encourage existing and new development to connect to and utilize the system. •Encourage water conservation in new and existing construction through education, regulation and incentives. •Maintain existing levels of waste water service by preserving and improving infrastructure, including replacing sewer mains as necessary within the Capital Improvement Program. |