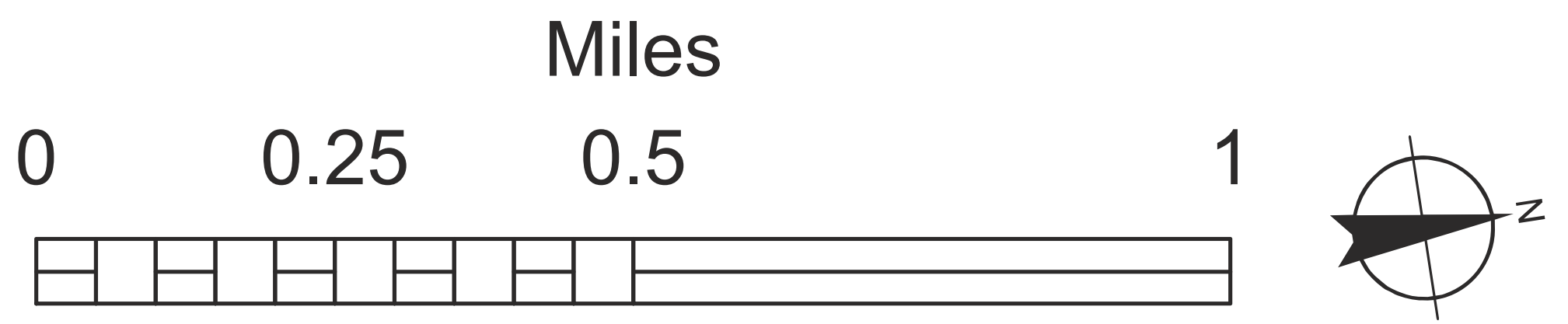
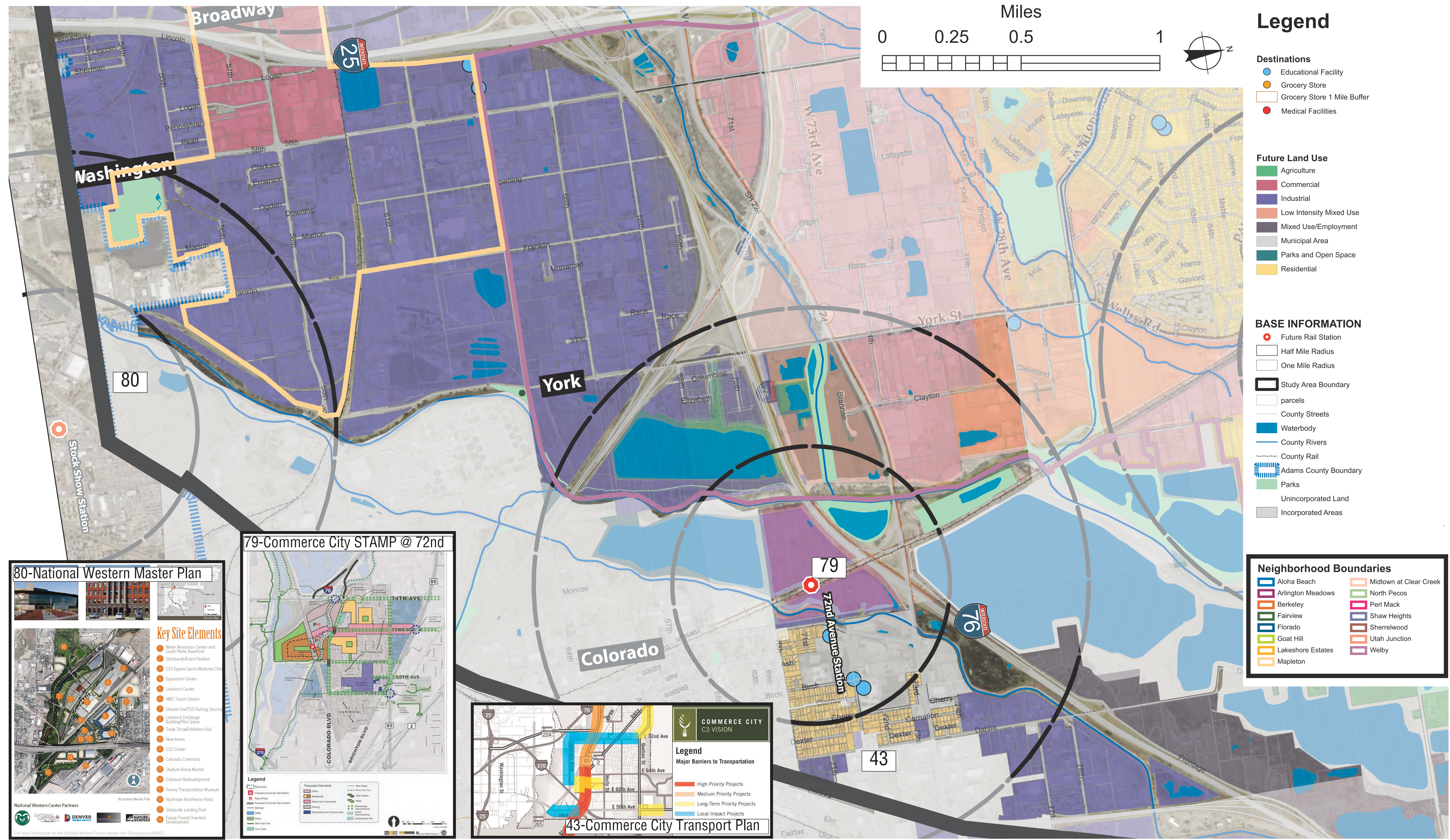


# Jobs, Housing, and Services | Trabajos, Vivienda y Servicios



- ### Legend
- Destinations**
    - Educational Facility
    - Grocery Store
    - Grocery Store 1 Mile Buffer
    - Medical Facilities
  - Future Land Use**
    - Agriculture
    - Commercial
    - Industrial
    - Low Intensity Mixed Use
    - Mixed Use/Employment
    - Municipal Area
    - Parks and Open Space
    - Residential
  - BASE INFORMATION**
    - Future Rail Station
    - Half Mile Radius
    - One Mile Radius
    - ▭ Study Area Boundary
    - parcels
    - County Streets
    - Waterbody
    - County Rivers
    - County Rail
    - ▭ Adams County Boundary
    - Parks
    - Unincorporated Land
    - Incorporated Areas
  - Neighborhood Boundaries**
    - Aloha Beach
    - Arlington Meadows
    - Berkeley
    - Fairview
    - Florado
    - Goat Hill
    - Lakeshore Estates
    - Mapleton
    - Midtown at Clear Creek
    - North Pecos
    - Perl Mack
    - Shaw Heights
    - Sherrelwood
    - Utah Junction
    - Welby

### 80-National Western Master Plan

**Key Site Elements**

- Water Resources Center and South Platte Riverfront
- Stockyards/Event Pavilion
- CSU Equine Sports Medicine Clinic
- Equestrian Center
- Livestock Center
- NWC Transit Station
- Shared Use/TOD Parking Structure
- Livestock Exchange Building/Office Space
- Trade Show/Exhibition Hall
- New Arena
- CSU Center
- Colorado Commons
- Stadium Arena Market
- Coliseum Redevelopment
- Forney Transportation Museum
- Northside Park/Heron Pond
- Globeville Landing Park
- Future Transit Oriented Development

### 79-Commerce City STAMP @ 72nd

**Legend**

- Proposed Changes
- Existing Infrastructure
- Other
- Open Space
- Waterbody
- County Streets
- County Rail
- Adams County Boundary
- Parks
- Unincorporated Land
- Incorporated Areas

### 43-Commerce City Transport Plan

**COMMERCE CITY C3 VISION**

**Legend**

- Major Barriers to Transportation
- High Priority Projects
- Medium Priority Projects
- Long-Term Priority Projects
- Local Impact Projects