

RECOMMENDATIONS: BASIC NEEDS

SAFETY



RANGER PATROLS - a coordinated patrol system for the corridor to report maintenance problems and prevent unsafe uses

SIGNAGE

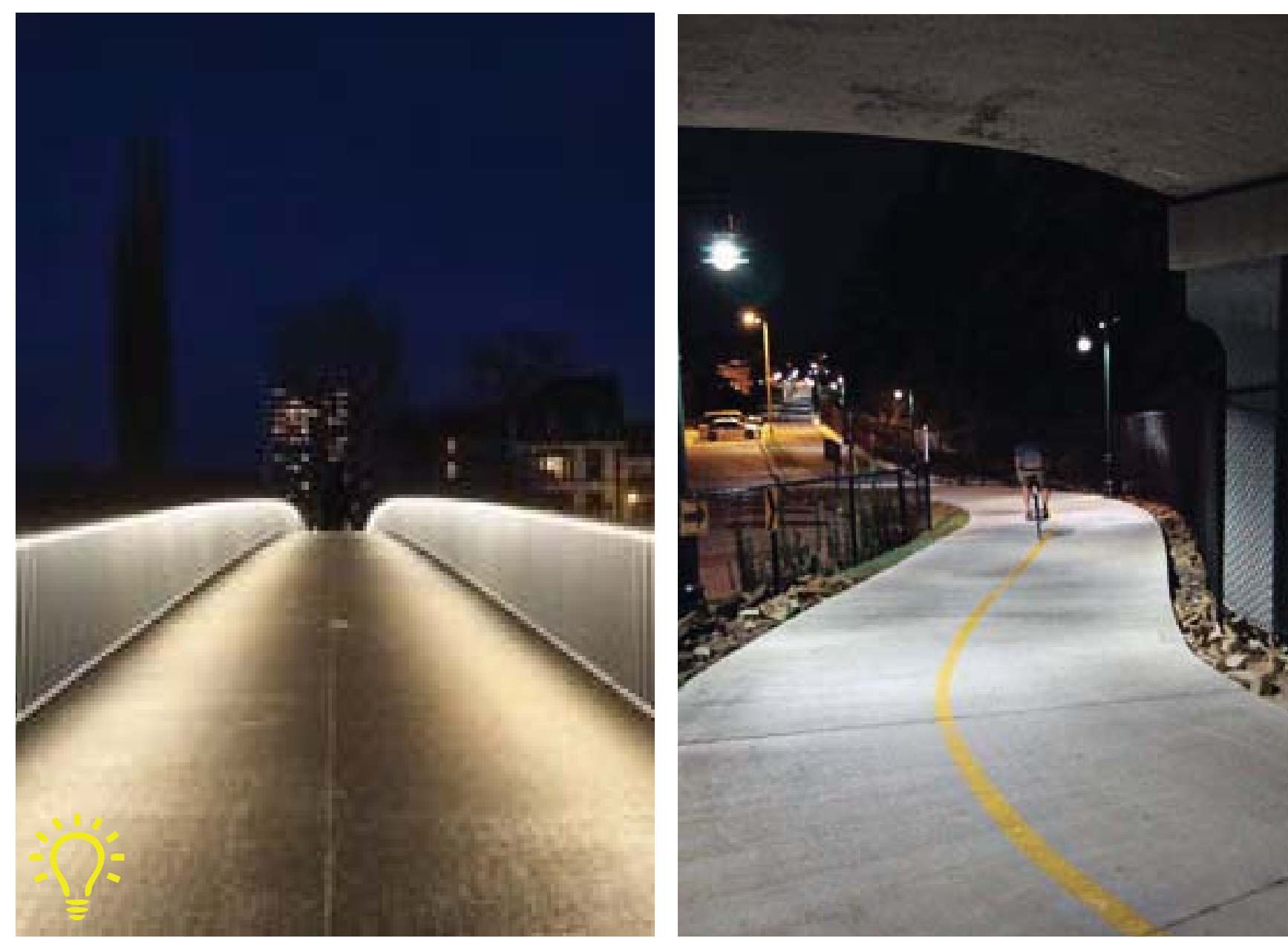


COORDINATE SIGNAGE - Combine signage efforts to mark location, define landmarks and add educational information

ACCESS



TRAILHEAD PARKING - Expand safe parking options with new lots and engage private owners to share parking areas when not in use.



LIGHTING GUIDELINES - repair and maintain existing lighting, add safety lighting at all transit stations, river crossings and underpasses



REGIONAL CONNECTIONS - Improve access to regional trails and transit areas for commuters and recreational users.



RESTROOMS - Include additional restroom facilities along trail, along with easy maintenance access for cleaning and replacement



SAFE PLACES TO CROSS - High-Intensity Activated Walk ("HAWK") traffic signals stop traffic when pedestrians need to cross

RECOMMENDATIONS: CIRCULATION & ACCESS

TWIN LAKES BOTTOMLANDS

RESIDENTIAL TRAIL CONNECTION AND TRAILHEAD

Trail connections from Scott Carpenter Middle School and Valley View Elementary open up new outdoor learning environments in the Twin Lakes Bottomlands. New walking trails provide access to wildlife areas while preserving wildlife habitats. Future developments south of Clear Creek should coordinate new crossings to connect to the river.

SOUTH PLATTE RIVER CONFLUENCE

REGIONAL TRAIL CONNECTION AND TRAILHEAD

Parking, restroom and pedestrian improvements recommended. Future development should expand pedestrian and bicycle access from South Platte River and Commerce City Commuter Rail. Preferred bike share location.

PECOS STREET

RESIDENTIAL TRAIL CONNECTION AND TRAILHEAD

Improved street and underpass crossings, pedestrian connection and neighborhood trail signage for Pecos Street Station, Berkley/Zuni and Sunnyside neighborhoods.

LITTLE DRY CREEK LAKE

REGIONAL TRAIL CONNECTION AND TRAILHEAD

A county-owned parcel with that connects the US-36 bikeway, Westminster Station, Arvada and Westminster. Recommend future expanded parking and trailhead amenities. Future connection along creek and across rail lines should be added if/when surface mining operations cease. Wayfinding improvements are needed until trail connects. Preferred bike share location.

TENNYSON STREET

RESIDENTIAL TRAIL CONNECTION AND TRAILHEAD

Add safe pedestrian and bicycle connections to Arvada Gold Strike Station, Clear Creek Valley Park and Jim Baker Reservoir. Enhanced HAWK crossing at Clear Creek recommended, along with nearby neighborhood signage.

FEDERAL BOULEVARD

MULTI-MODAL RESIDENTIAL TRAIL CONNECTION

Planned improvements at underpass connect neighborhood routes with Clear Creek Station. Additional lighting, wayfinding and right-of-way enhancements for neighborhood cyclists recommended. Preferred bike share location.

LOWELL BOULEVARD

RESIDENTIAL TRAIL CONNECTION AND TRAILHEAD

Complete multi-use trail connections to Jim Baker Reservoir, Clear Creek Valley Park, Lowell Ponds and Carl Park Community Center. Neighborhood trail signage helps navigation southward from Westminster, Arvada and Aloha Beach, and northward from Berkeley and Regis University.

YORK STREET

RESIDENTIAL TRAIL CONNECTION

Planned improvements include new sidewalk / trail connection. Additional neighborhood signage recommended.

WASHINGTON STREET

EMERGENCY ACCESS

New access for Emergency Services. Potential connections to planned detached walk.

SHERIDAN BOULEVARD

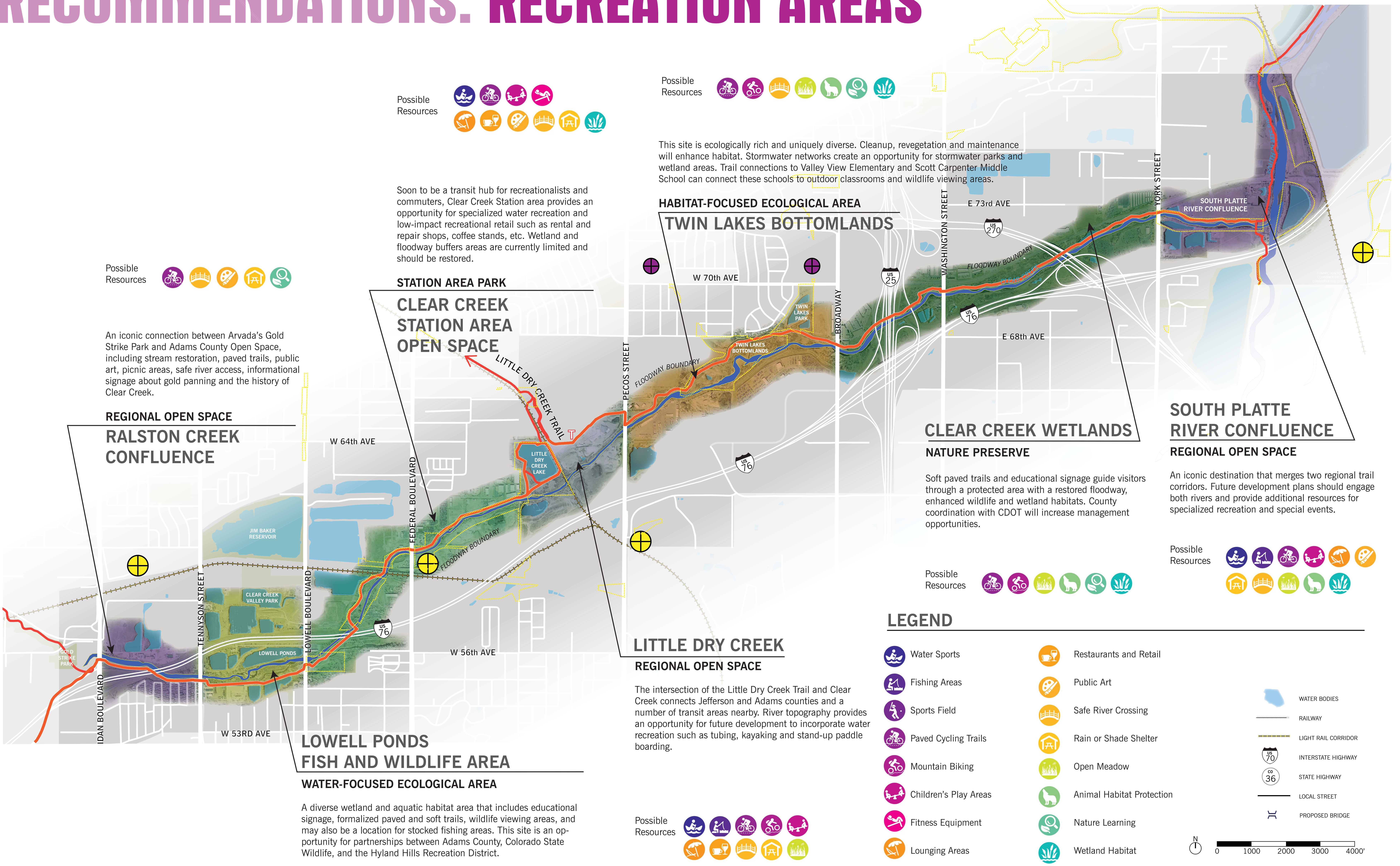
REGIONAL TRAIL CONNECTION AND TRAILHEAD

Improved connection with Gold Strike Park, neighborhood trail signage, improved pedestrian and cyclist safety crossings. Preferred bike share location.

LEGEND

	EXISTING TRAILHEAD		HAWK BEACON PEDESTRIAN CROSSING
	POTENTIAL TRAILHEAD		BIKE SHARE STATION
	CLEAR CREEK CORRIDOR TRAIL		PARKING AREA
	REGIONAL TRAIL		RESTROOM
	EXISTING NEIGHBORHOOD TRAIL		REGIS UNIVERSITY CONNECTING TRAIL
	POTENTIAL NEIGHBORHOOD CONNECTOR TRAIL		NEW EMERGENCY ACCESS
	POTENTIAL SOFT TRAIL		RAILWAY
	SCHOOL		LIGHT RAIL CORRIDOR
	TRANSIT CENTER		INTERSTATE HIGHWAY
	REGIONAL TRAIL HUB		STATE HIGHWAY
	PLANNED IMPROVED CROSSING		LOCAL STREET
	PROPOSED IMPROVED CROSSING		POTENTIAL CROSSING
	WATERWAY / WATERWAY		EXISTING CROSSING
	WATER BODIES / WATER BODIES		

RECOMMENDATIONS: RECREATION AREAS



Possible Resources



An iconic connection between Arvada's Gold Strike Park and Adams County Open Space, including stream restoration, paved trails, public art, picnic areas, safe river access, informational signage about gold panning and the history of Clear Creek.

REGIONAL OPEN SPACE RALSTON CREEK CONFLUENCE

Soon to be a transit hub for recreationalists and commuters, Clear Creek Station area provides an opportunity for specialized water recreation and low-impact recreational retail such as rental and repair shops, coffee stands, etc. Wetland and floodway buffers areas are currently limited and should be restored.

STATION AREA PARK CLEAR CREEK STATION AREA OPEN SPACE

Possible Resources



This site is ecologically rich and uniquely diverse. Cleanup, revegetation and maintenance will enhance habitat. Stormwater networks create an opportunity for stormwater parks and wetland areas. Trail connections to Valley View Elementary and Scott Carpenter Middle School can connect these schools to outdoor classrooms and wildlife viewing areas.

HABITAT-FOCUSED ECOLOGICAL AREA TWIN LAKES BOTTOMLANDS

CLEAR CREEK WETLANDS NATURE PRESERVE

Soft paved trails and educational signage guide visitors through a protected area with a restored floodway, enhanced wildlife and wetland habitats. County coordination with CDOT will increase management opportunities.

SOUTH PLATTE RIVER CONFLUENCE REGIONAL OPEN SPACE

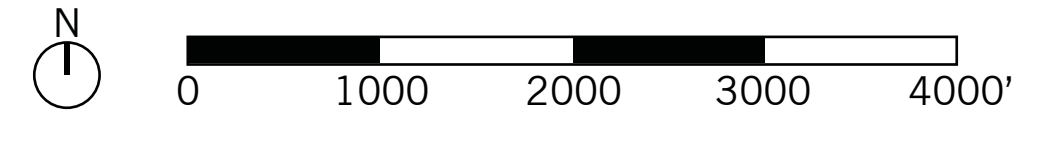
An iconic destination that merges two regional trail corridors. Future development plans should engage both rivers and provide additional resources for specialized recreation and special events.

Possible Resources



LEGEND

- Water Sports
- Fishing Areas
- Sports Field
- Paved Cycling Trails
- Mountain Biking
- Children's Play Areas
- Fitness Equipment
- Lounging Areas
- Restaurants and Retail
- Public Art
- Safe River Crossing
- Rain or Shade Shelter
- Open Meadow
- Animal Habitat Protection
- Nature Learning
- Wetland Habitat
- WATER BODIES
- RAILWAY
- LIGHT RAIL CORRIDOR
- INTERSTATE HIGHWAY
- STATE HIGHWAY
- LOCAL STREET
- PROPOSED BRIDGE



LOWELL PONDS FISH AND WILDLIFE AREA WATER-FOCUSED ECOLOGICAL AREA

A diverse wetland and aquatic habitat area that includes educational signage, formalized paved and soft trails, wildlife viewing areas, and may also be a location for stocked fishing areas. This site is an opportunity for partnerships between Adams County, Colorado State Wildlife, and the Hyland Hills Recreation District.

LITTLE DRY CREEK REGIONAL OPEN SPACE

The intersection of the Little Dry Creek Trail and Clear Creek connects Jefferson and Adams counties and a number of transit areas nearby. River topography provides an opportunity for future development to incorporate water recreation such as tubing, kayaking and stand-up paddle boarding.

Possible Resources



Possible Resources

