



ADAMS COUNTY

COLORADO

BOARD OF COUNTY COMMISSIONERS

Eva J. Henry - District #1
Charles "Chaz" Tedesco - District #2
Erik Hansen - District #3
Steve O'Dorisio - District #4
Jan Pawlowski - District #5

**STUDY SESSION AGENDA
TUESDAY
August 9, 2016**

ALL TIMES LISTED ON THIS AGENDA ARE SUBJECT TO CHANGE.

- | | | |
|-------------------|---------------------|--|
| 10:00 A.M. | ATTENDEE(S): | Abel Montoya / Rachel Bacon |
| | ITEM: | Making Connections |
| 11:00 A.M. | ATTENDEE(S): | Kristin Sullivan / Nana Appiah/ Andrea Berg |
| | ITEM: | Marijuana Permitting – Status and Next Steps |
| 11:30 A.M. | ATTENDEE(S): | Todd Leopold |
| | ITEM: | Administrative Item Review / Commissioner Communications |
| 12:00 P.M. | ATTENDEE(S): | Heidi Miller |
| | ITEM: | Executive Session Pursuant to C.R.S. 24-6-402(4)(b) and (e) for the Purpose of Receiving Legal Advice and Instructing Negotiators Regarding Rodriguez Case |
| 12:30 P.M. | ATTENDEE(S): | Heidi Miller |
| | ITEM: | Executive Session Pursuant to C.R.S. 24-6-402(4)(f) for the Purpose of Discussing Personnel Matters Involving the County Manager and Human Resources Director |

(AND SUCH OTHER MATTERS OF PUBLIC BUSINESS WHICH MAY ARISE)

AGENDA IS SUBJECT TO CHANGE



STUDY SESSION AGENDA ITEM

DATE: August 9, 2016
SUBJECT: Making Connections in Southwest Adams County Planning & Implementation Plan- Update on Top 10 Projects
FROM: Abel Montoya, Director
AGENCY/DEPARTMENT: Office of Long Range Strategic Planning
ATTENDEES: Abel Montoya, Rachel Bacon, Rebecca Zamora, Lori Wisner, Carolina VanHorn
PURPOSE OF ITEM: Information
STAFF RECOMMENDATION: Information

BACKGROUND:

Provide information regarding the process to get to the draft Top 10 Project List for the Making Connections in Southwest Adams County Planning and Implementation Plan.

Additional information on the Making Connections Plan may be viewed online at:
www.adcogov.org/makingconnections

AGENCIES, DEPARTMENTS OR OTHER OFFICES INVOLVED:

ATTACHED DOCUMENTS:

PowerPoint Presentation

FISCAL IMPACT:

Please check if there is no fiscal impact . If there is fiscal impact, please fully complete the section below.

Fund:

Cost Center:

	Object Account	Subledger	Amount
Current Budgeted Revenue:			
Additional Revenue not included in Current Budget:			
Total Revenues:			<hr/>

	Object Account	Subledger	Amount
Current Budgeted Operating Expenditure:			
Add'l Operating Expenditure not included in Current Budget:			
Current Budgeted Capital Expenditure:			
Add'l Capital Expenditure not included in Current Budget:			
Total Expenditures:			<hr/>

New FTEs requested: YES NO

Future Amendment Needed: YES NO

Additional Note:

APPROVAL SIGNATURES:


APPROVAL OF FISCAL IMPACT:



Todd Leopold, County Manager



Nancy Duncan
Budget / Finance



Raymond H. Gonzales, Deputy County Manager

Ed Finger, Deputy County Manager



MAKING CONNECTIONS/ SW ADAMS COUNTY

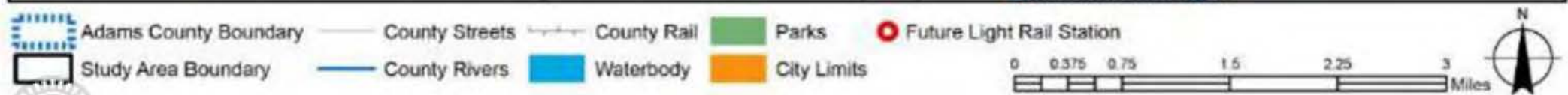
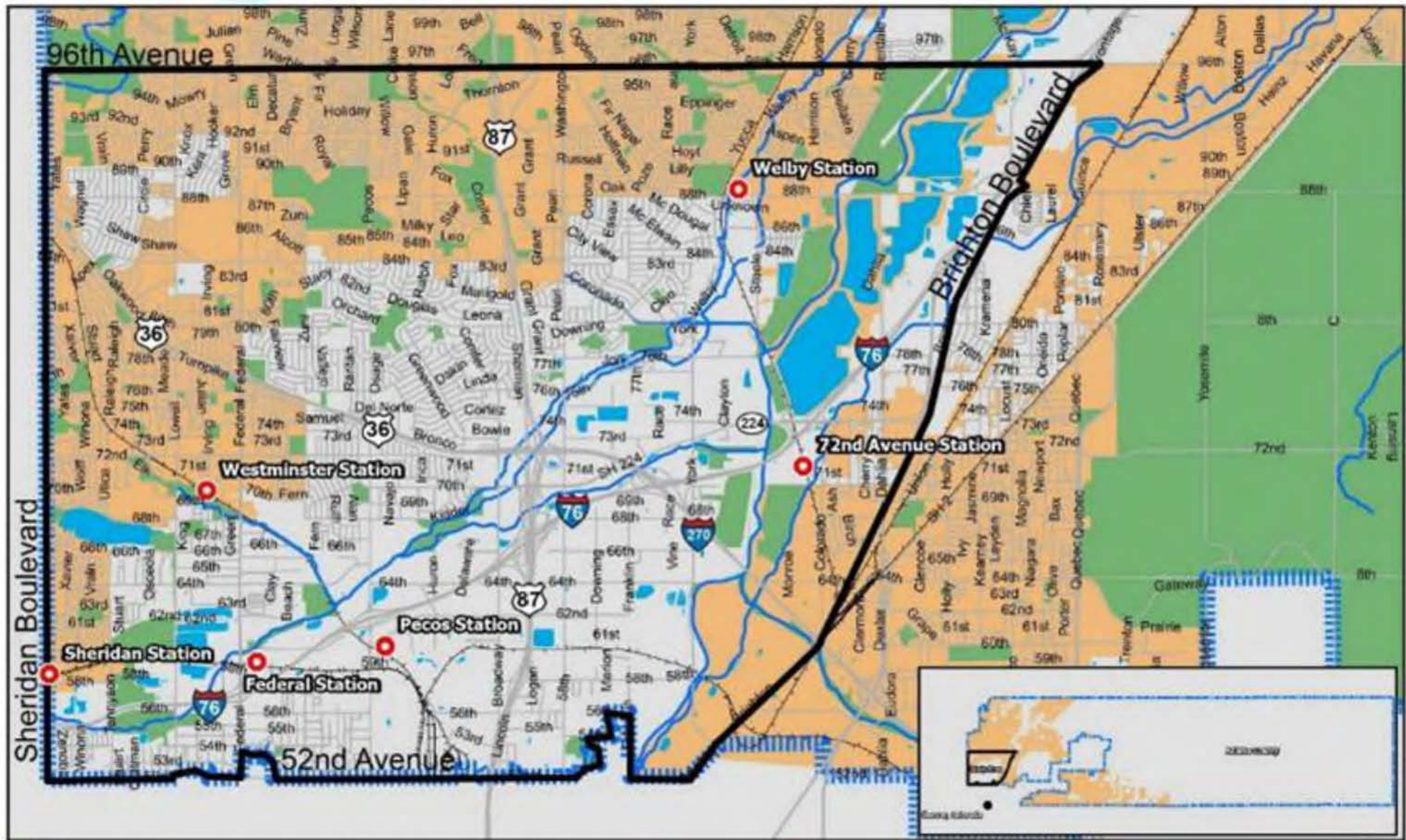
Planning and Implementation Plan

ADAMS COUNTY



Status Update
BOCC August 9, 2016

**WILSON
& COMPANY**



Making Connections Plan Study Area: 13,177 Acres

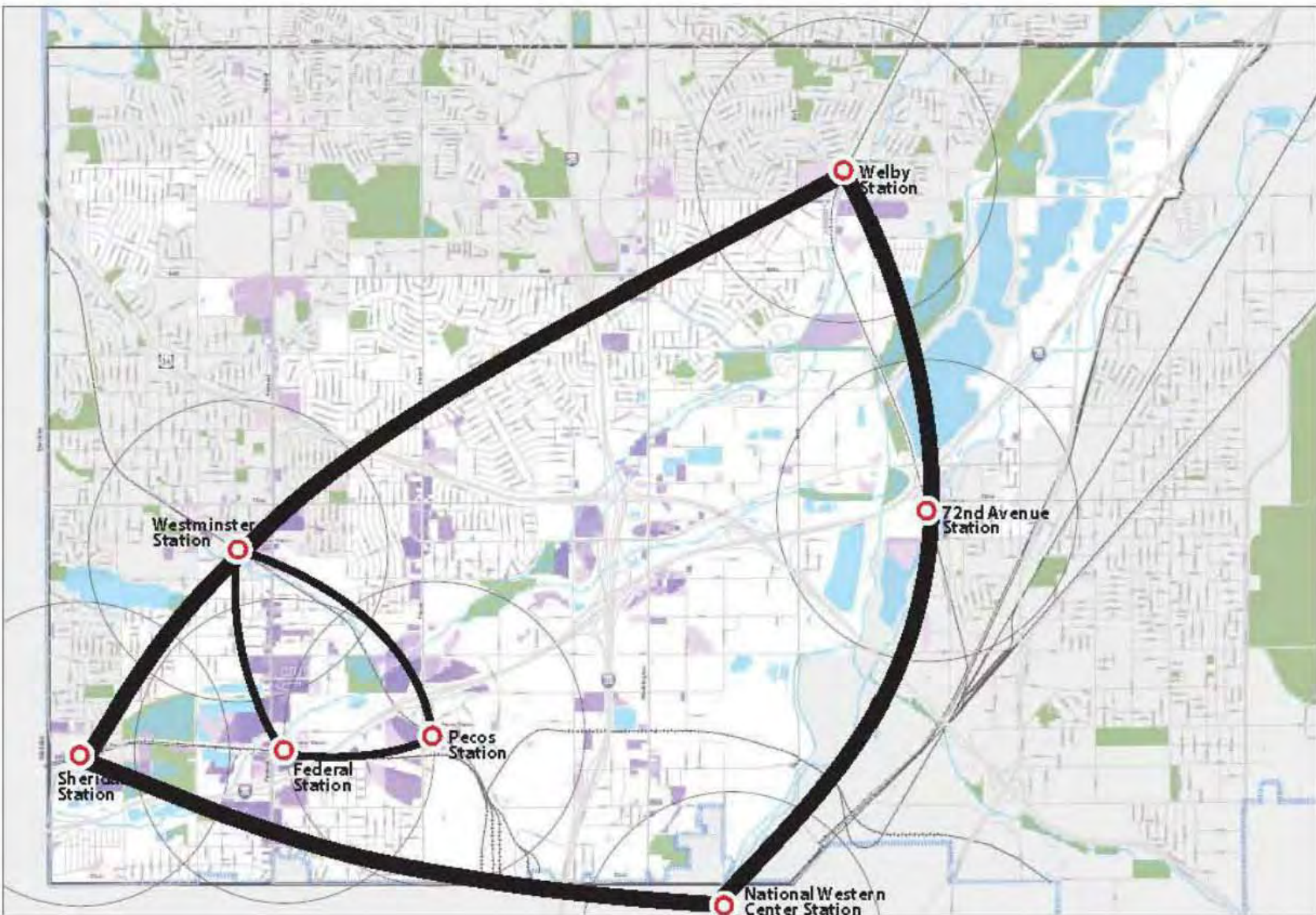
1/8 of the area is within a half mile radius (10-minute walk) of one of six planned RTD FasTracks commuter rail stations

The RTD FasTracks Plan

- 122 miles of new light rail and commute rail
- 18 miles of bus rapid transit (BRT)
- 31 new Park-n-Rides; 21,000+ parking spaces
- Enhanced bus network and transit hubs
- Redevelopment of Denver Union Station
- 57 new rail and/or BRT stations
- Opportunities for Transit-Oriented Communities



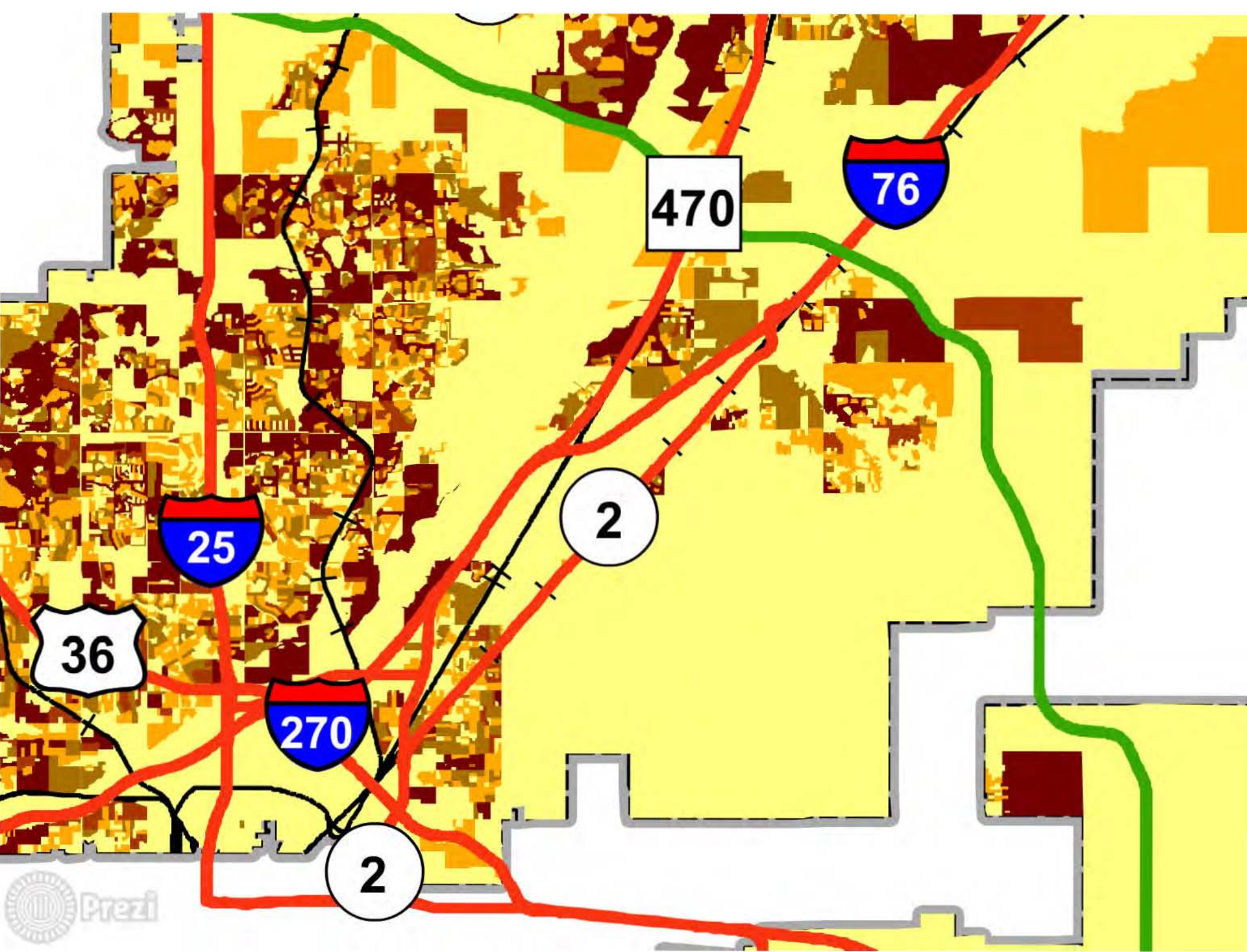






The RTD FasTracks Plan

- 122 miles of new light rail and commute rail



Nearly 17% of Adams County residents live here (less than 2% of the county land area). The county is expected to double in population by 2040.



Planning in SW Adams County

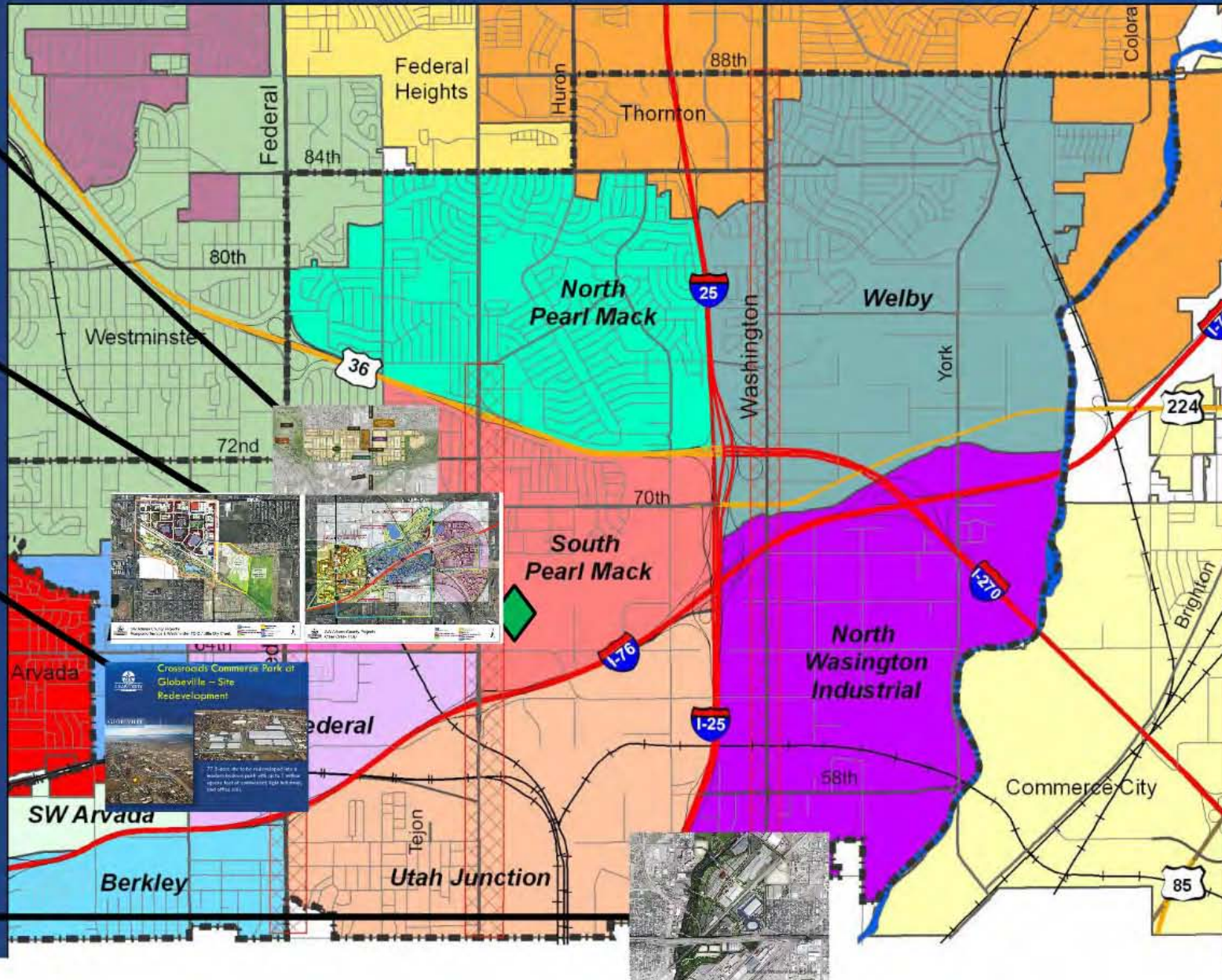
not to scale

Midtown

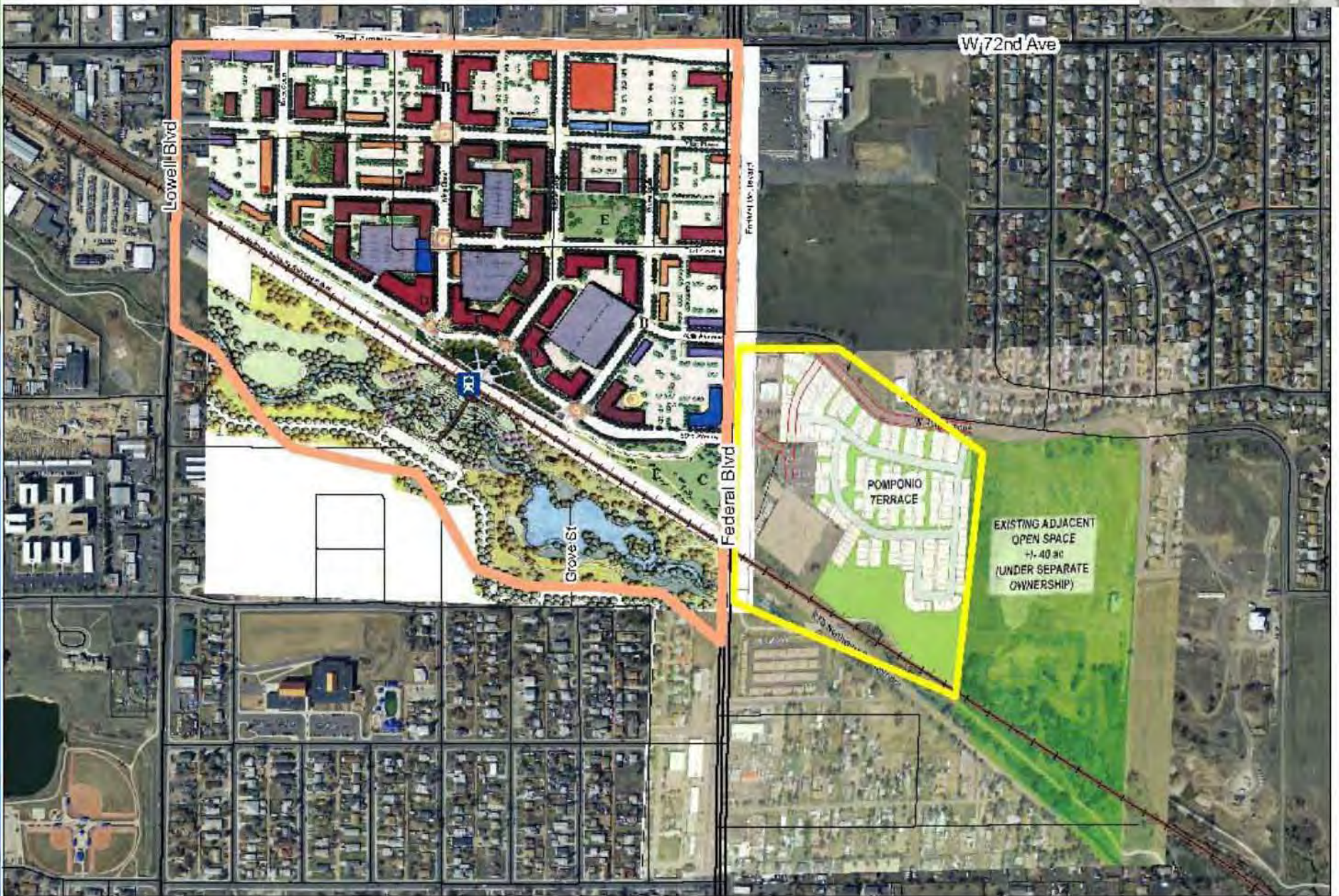
Pomponio
Terrace

Clear Creek
Transit Village

Crossroads
Commerce
Park at
Globeville



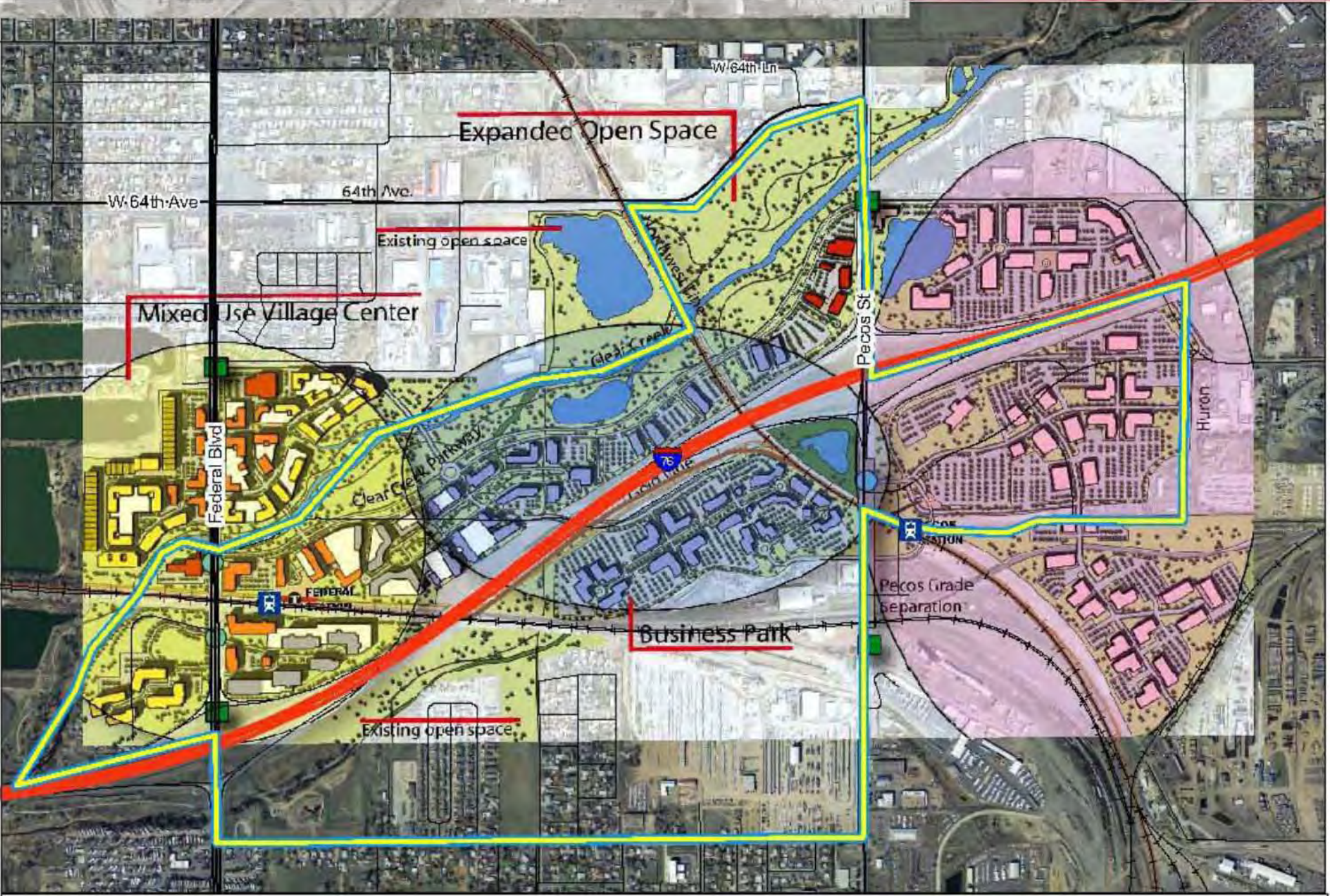




SW Adams County Projects
 Pomponio Terrace & Westminster TOD / Little Dry Creek

- FreeRack Stations
- Planned Transportation Projects
- Crosswalk/Commuter Park at Stations
- Midway
- Federal Western Center
- Pomponio Terrace
- Parkville Park
- Westminster TOD / Little Dry Creek
- Suni Park Residences
- Deer Creek TOD





SW Adams County Projects
Clear Creek TOD

- | | |
|--|---|
|  Fast Track Station |  National Western Center |
|  Planned Transportation Project |  Rompage Terrace |
|  Classified Commercial Park of Colorado |  Tollita Park |
|  Midvale |  Westmore 100 Little Dry Creek |
| |  Sun Park Residences |
| | Clear Creek TOD |





Crossroads Commerce Park at Globeville – Site Redevelopment

GLOBEVILLE
COMMERCE CENTER



- 77.5-acre site to be redeveloped into a modern business park with up to 1 million square feet of commercial, light industrial, and office uses.



National Western Stock Show

- August 16: Neighborhood Meeting: Review Top 10 Projects
- August 17 & 18: Focus Group + TAC
- September 26: Review Final Plan Draft
- October 27: Planning Commission public hearing and potential adoption
- December 6: Board County Commissioners public hearing and potential ratification

Work Plan & Schedule

Tasks/Phases



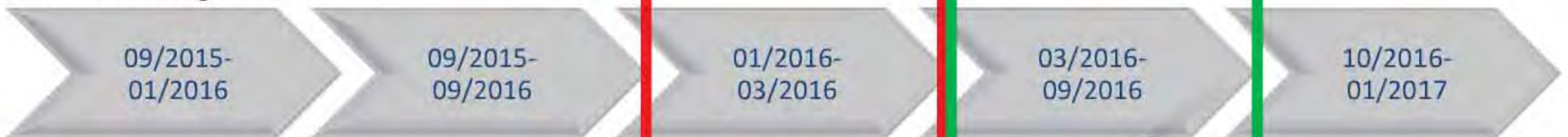
Public Involvement



Deliverables



Schedule Range

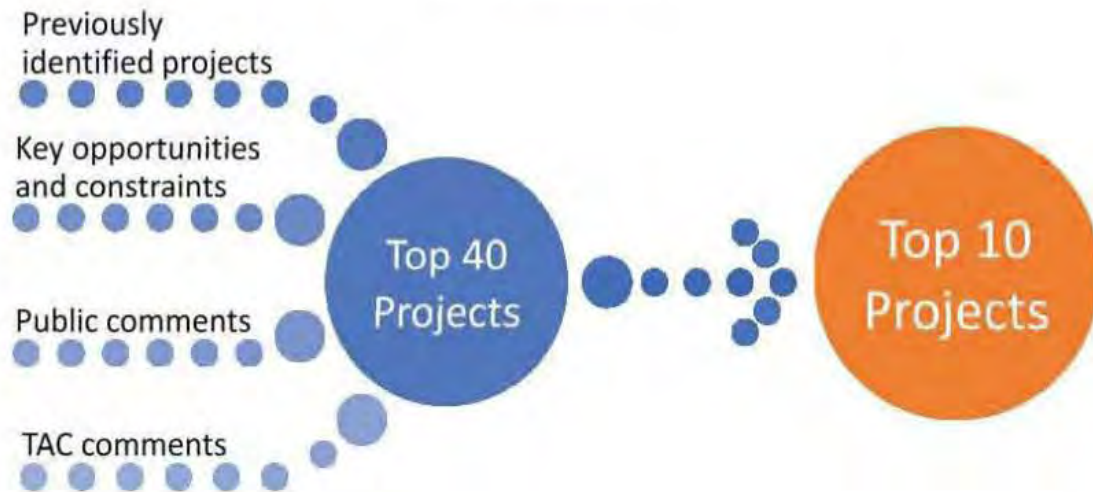


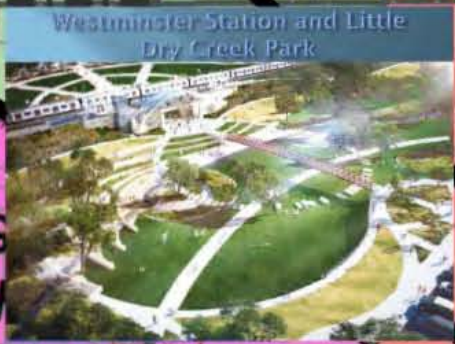
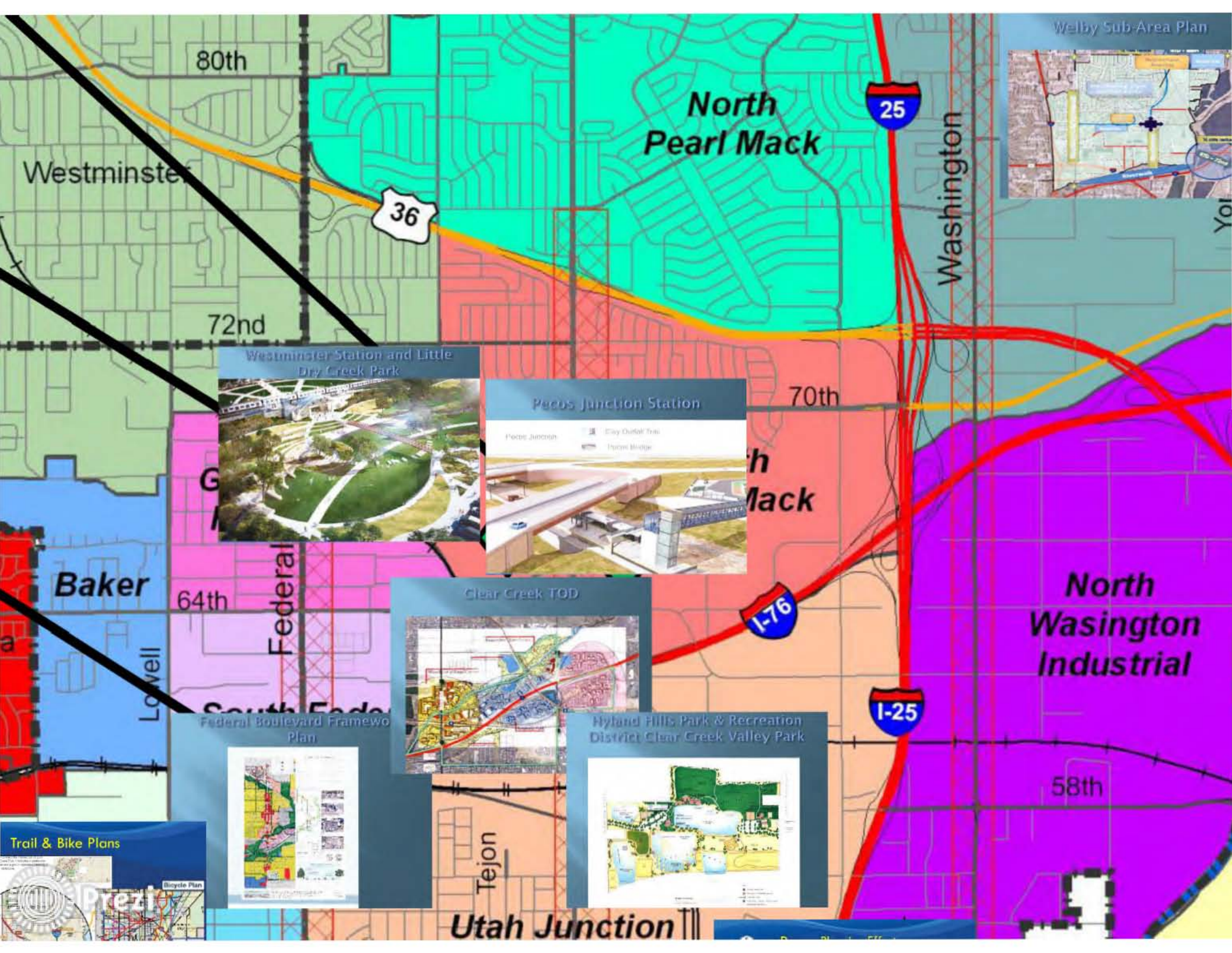


84 Plans

184 Projects

Figure – Project Prioritization Process



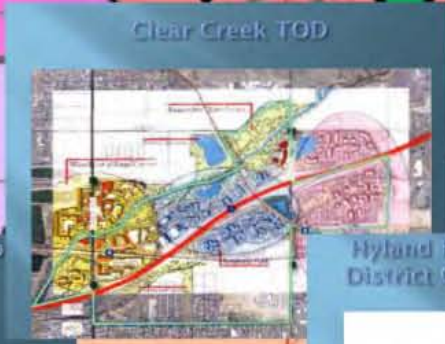


Westminister Station and Little Dry Creek Park



Pecos Junction Station

- Pecos Junction
- Elroy Outfall Trail
- Thompson Bridge



Clear Creek TOD



Hyland Hills Park & Recreation District Clear Creek Valley Park



Federal Boulevard Framework Plan



Trail & Bike Plans

Bicycle Plan

Utah Junction

Westminster

80th

72nd

64th

Lowell

South Federal

Tejon

North Pearl Mack

70th

h Mack

Baker

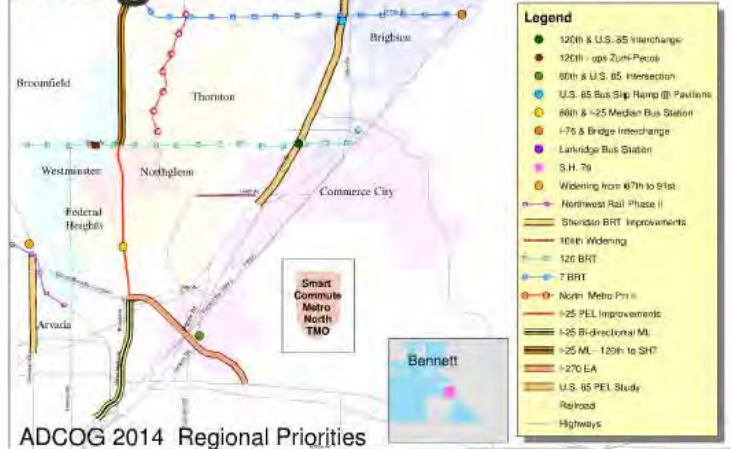
North Washington Industrial

58th

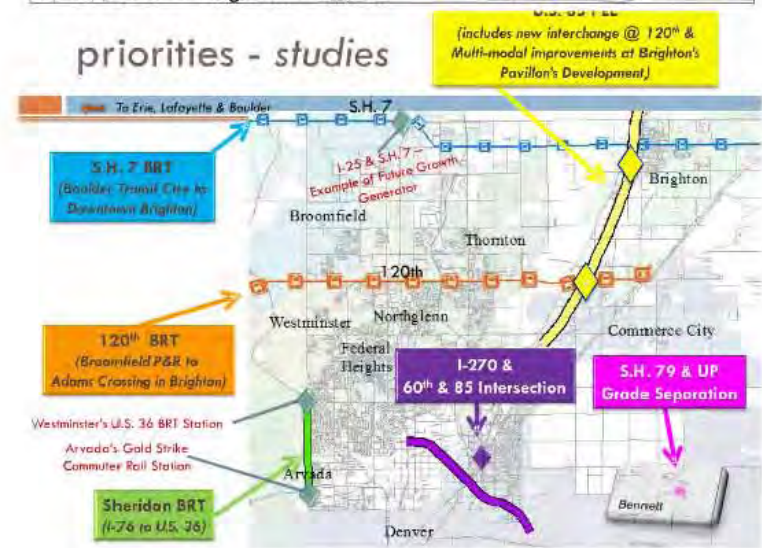


Washington

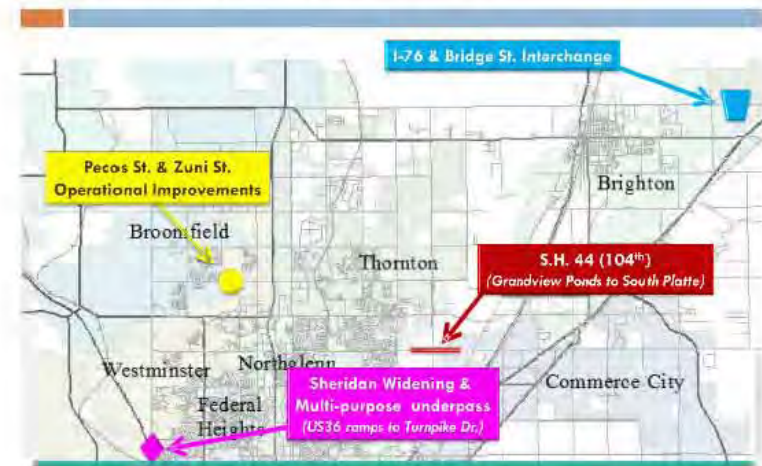
Regional Priorities



priorities - studies



priorities -- construction

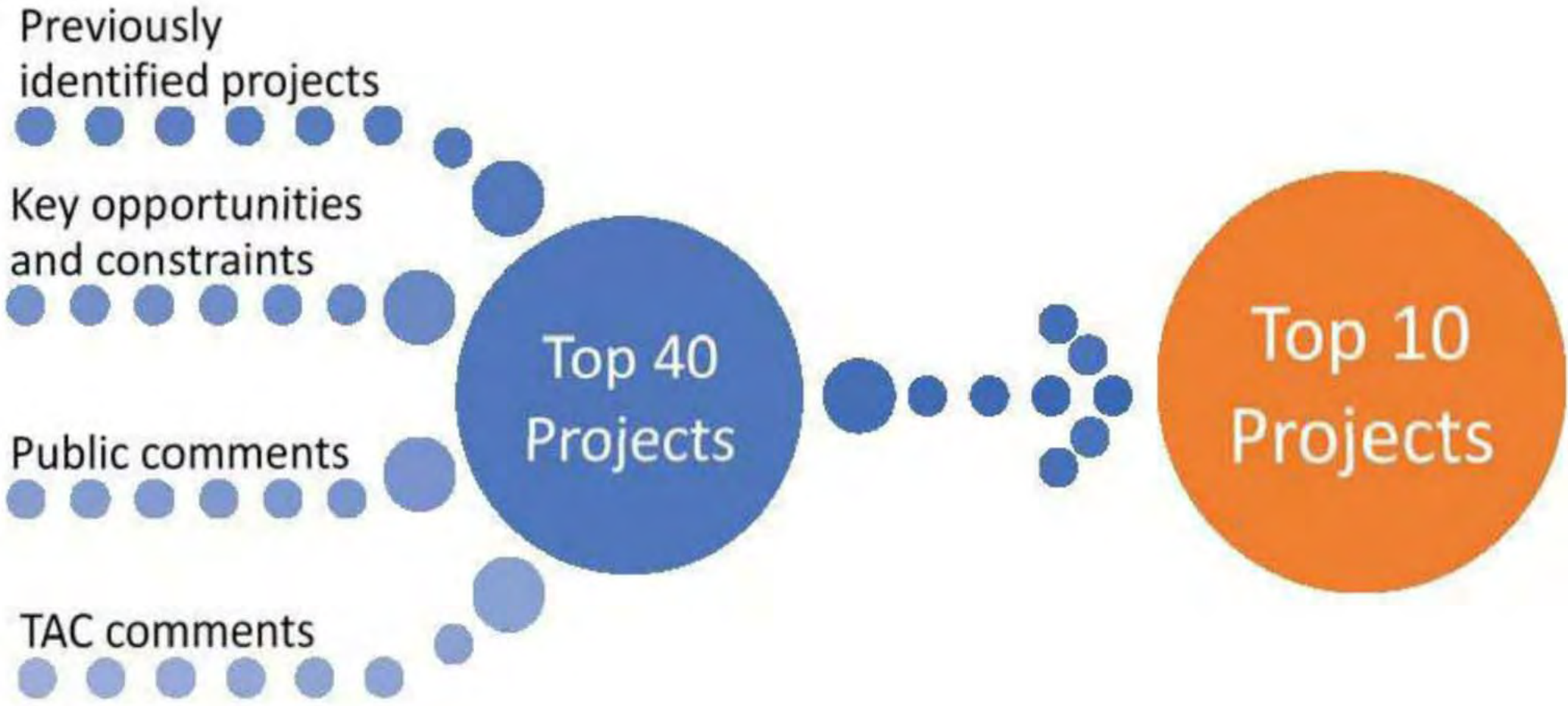


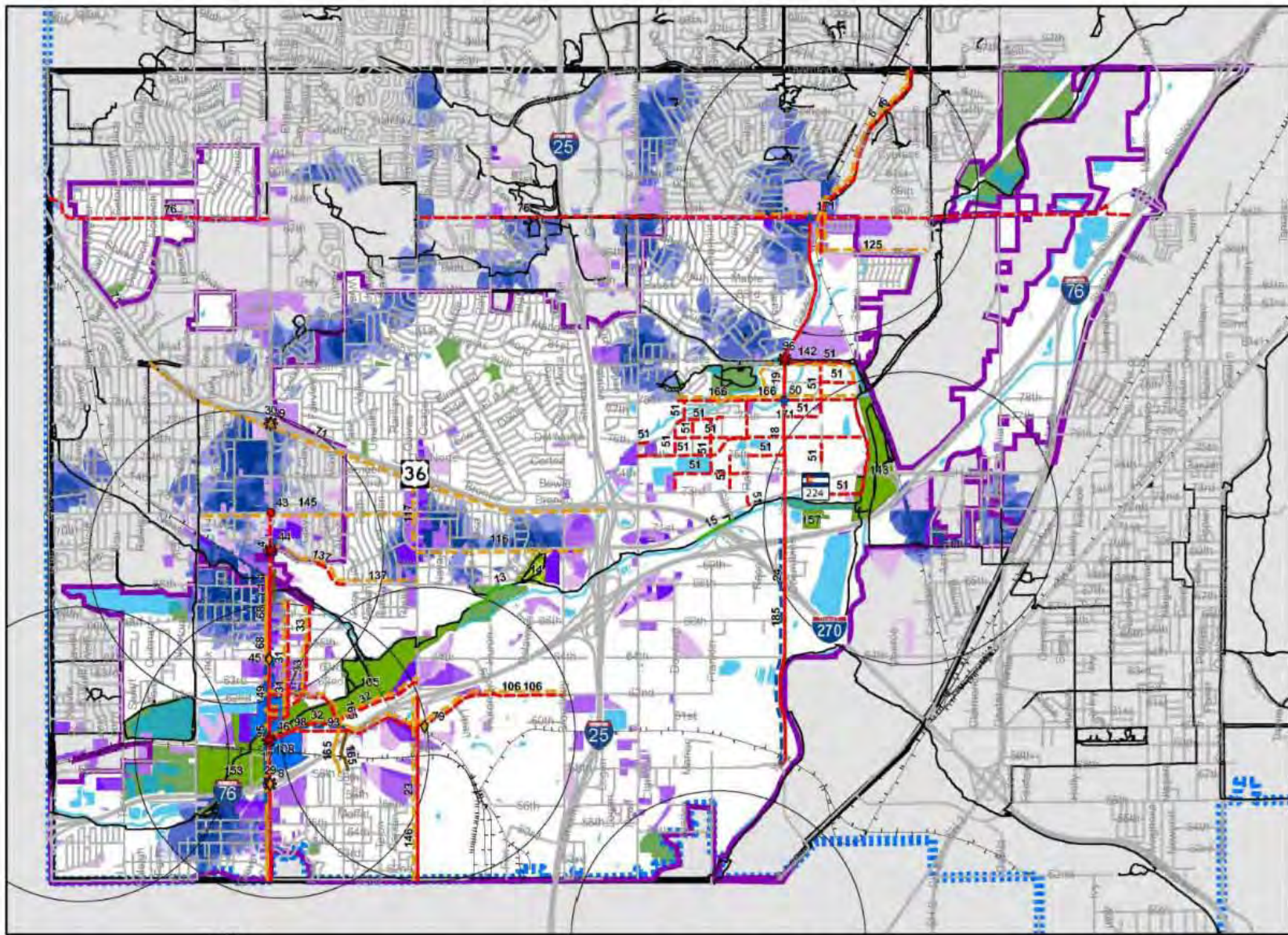
14 Page Full Project List

Plan ID	Plan/Study/Report Name (Document Type) (Project/Fund Type)	Date	Project ID	Recommendation or Project Name/Description	Plan IDs	Project Type	Project Status
1	US 287 & 69 th Bridge Replacement over BNSF & RTD Railways (project highlights)	TBD	1	Federal Blvd Bridge over Little Dry Creek/ BSNF	1,9,22	Roadway/Traffic	In Progress
1	US 287 & 69 th Bridge Replacement over BNSF & RTD Railways (project highlights)	TBD	1	Federal Blvd Bridge over Little Dry Creek/ BSNF	1,9,22	Non-Motorized	In Progress
1	US 287 & 69 th Bridge Replacement over BNSF & RTD Railways (project highlights)	TBD	1	Federal Blvd Bridge over Little Dry Creek/ BSNF	1,9,22	Drainage	In Progress
2	Goat Hill Neighborhood (Neighborhood Plan)	TBD	2	Goat Hill Neighborhood Plan - Waiting for plan development & Prioritization	2	Development/Private Development	In Progress
3	South Westminster Revitalization Strategy (Open House Presentation)	TBD	3	South Westminster Revitalization Strategy (Open House Presentation)	3	Development/Private Development	Not In Progress
4	Federal Boulevard Health Impact Assessment (HIA)	2015	4	Westminster Federal Streetscape 70-72	4,14,36,40	Roadway/Traffic	Not In Progress
4	Federal Boulevard Health Impact Assessment (HIA)	2015	7	Intersection Improvement, 64th Ave and Federal Blvd	4	Roadway/Traffic	Not In Progress
4	Federal Boulevard Health Impact Assessment (HIA)	2015	8	Safe Pedestrian Crossing, Federal Blvd and I-76	4	Non-Motorized	Not In Progress
4	Federal Boulevard Health Impact Assessment (HIA)	2015	9	Safe Pedestrian Crossing, Federal Blvd and US 36	4	Non-Motorized	Not In Progress
4	Federal Boulevard Health Impact Assessment (HIA)	2015	10	Lighting Under bridge Clear Creek Trail	4	Non-Motorized	Not In Progress
4	Federal Boulevard Health Impact Assessment (HIA)	2015	11	Do not Eliminate Affordable Housing as illustrated in Appendix K	4	Development/Private Development	In Progress
7	2016 Preliminary Budget Book including 5-Year CIP (CIP) (General Fund)	2015	12	Little Dry Creek Drainage Project	7	Drainage	In Progress
7	2016 Preliminary Budget Book including 5-Year CIP (CIP) (Open Space Fund)	2015	13	Clear Creek Trail Replacement	7	Parks/ Open Space	In Progress
7	2016 Preliminary Budget Book including 5-Year CIP (CIP) (Open Space Fund)	2015	14	Twin Lakes Park Renovation	7	Parks/ Open Space	In Progress
7	2016 Preliminary Budget Book including 5-Year CIP (CIP) (Open Space Fund)	2015	15	Clear Creek Trail Access	7	Parks/ Open Space	In Progress
7	2016 Preliminary Budget Book including 5-Year CIP (CIP) (Open Space Fund)	2015	16	Jim Baker Reservoir Renovations	12,22, 7	Parks/ Open Space	In Progress
7	2016 Preliminary Budget Book including 5-Year CIP (CIP) (Road & Bridge Fund)	2015	18	Syr CIP York Rd Improvement, Hwy224-78th Ave	7	Roadway/Traffic	In Progress
7	2016 Preliminary Budget Book including 5-Year CIP (CIP) (Road & Bridge Fund)	2015	19	York/ Welby St Improvement 78th-88th Ave -CIP	7,22	Roadway/Traffic	In Progress
7	2016 Preliminary Budget Book including 5-Year CIP (CIP) (Road & Bridge Fund)	2015	20	Syr CIP 58th Ave Rd Improvement, Washington-York	7	Roadway/Traffic	In Progress

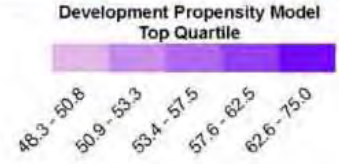
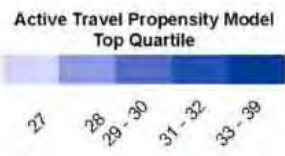
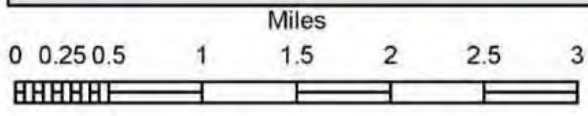


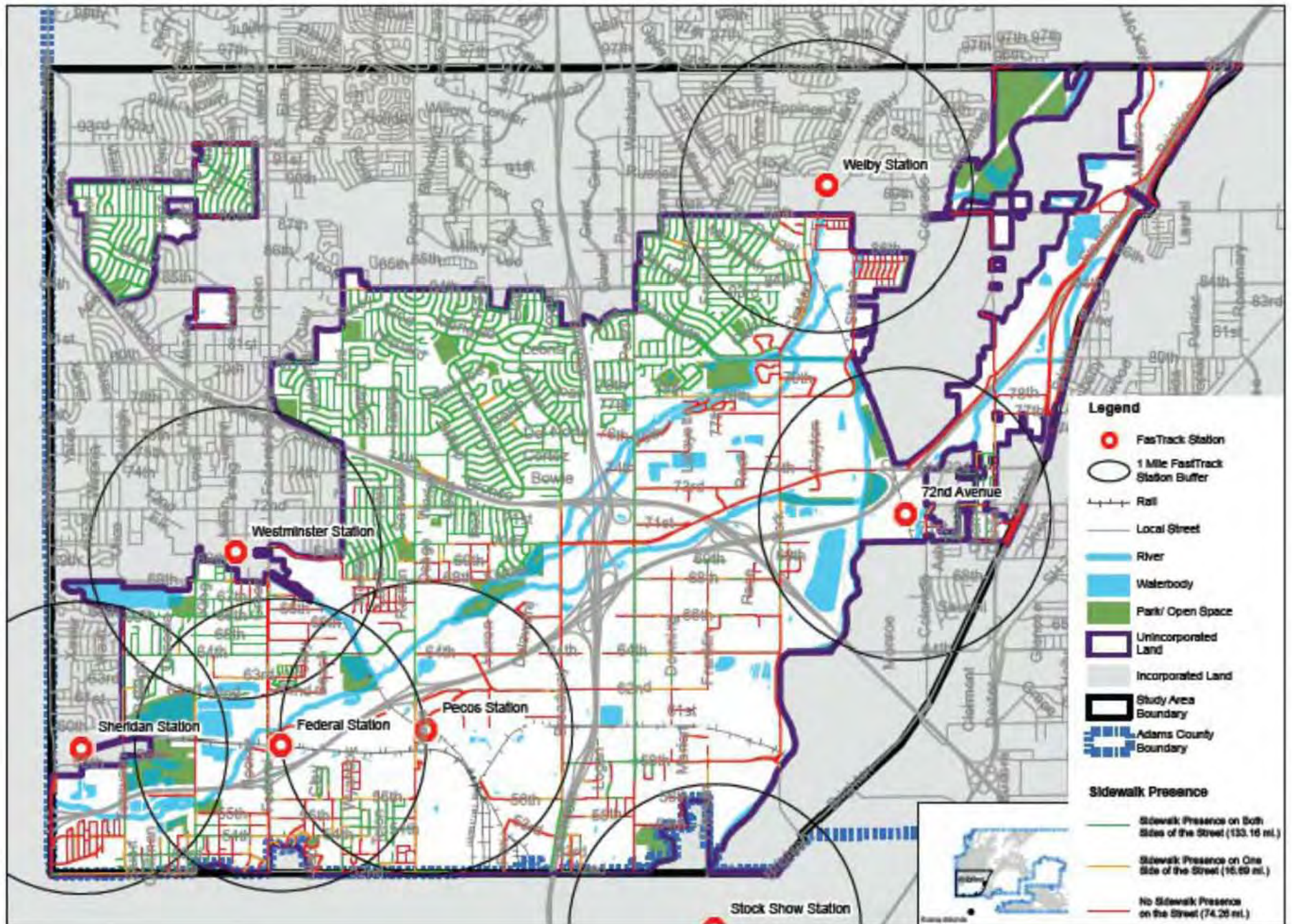
Figure -: Project Prioritization Process





- Legend**
- FasTrack Station
 - 1 Mile FasTrack Station Buffer
 - Local Street
 - Existing ADCO Trail
 - Rail
 - Unincorporated Land
 - Study Area Boundary
 - Adams County Boundary
 - Incorporated Land
 - River
 - Waterbody
 - Park/ Open Space
- Identified Project Type**
- XX - Project ID
- Non-Motorized, In Progress
 - Non-Motorized, Identified
 - Drainage, In Progress
 - Drainage, Identified
 - Parks/ Open Space, In Progress
 - Roadway/ Traffic, In Progress
 - Roadway/ Traffic, Identified
 - Water/ Sanitation, Identified
 - Drainage, In Progress
 - Drainage, Identified
 - Parks/ Open Space, In Progress
 - Parks/ Open Space, Identified







MAKING CONNECTIONS/SW ADAMS COUNTY PLANNING AND IMPLEMENTATION PLAN
 MAKING CONNECTIONS/PLANEACIÓN Y PLAN DE IMPLEMENTACIÓN EN EL SUROESTE DEL CONDADO DE ADAMS

- **Check Local Hazard Development Standards**
 Update subdivision regulations to encourage low impact developments.
- **Create a Neighborhood Zoning**
 Encourage and coordinate zoning and development code updates to address neighborhood needs. This may range from land-use planning programs, traffic and speed mitigation programs, community gardens, and other neighborhood needs. Also include, but not limited to, affordable housing and support services programs, etc.
- **Check a Conservation Designated Development Program**
 Study and identify ways to enhance wildlife management. Such strategies may include improved transportation systems, incentives to use alternative modes and reduce driving, parking and land-use management, and policy and institutional reforms.
- **Create a Complete Streets Policy and Complete Streets Division**
 Create a policy to encourage design standards that promote a mix of modes, active and healthy ways to get to work and school, and increase the safety of all users.
- **Develop Transportation System Goals**
 Update Regional Growth Council (RGC) and Local Government District (LDG) Public Improvement District (PID) Subdivision Authority/Intergovernmental Agreements, and Road Resilience. Funds to be distributed to transportation, public health and recreation facilities.
- **Study a "Planning is the Answer" or "Planning is the Answer" program at Adams County**
 Create an online system where "long range planning issues" or "programs" require meeting to be held as outlined in development code program.

- **Attract Local (LDG) Areas to the SW of Adams County**
 Update the subdivision regulations to encourage low impact developments.
- **Map residents of Adams County**
 Analyze the population distribution to create a map of Adams County.
- **Check local development standards**
 Update subdivision regulations to encourage low impact developments.
- **Check a Conservation Designated Development Program**
 Study and identify ways to enhance wildlife management. Such strategies may include improved transportation systems, incentives to use alternative modes and reduce driving, parking and land-use management, and policy and institutional reforms.
- **Create a Complete Streets Policy and Complete Streets Division**
 Create a policy to encourage design standards that promote a mix of modes, active and healthy ways to get to work and school, and increase the safety of all users.
- **Develop Transportation System Goals**
 Update Regional Growth Council (RGC) and Local Government District (LDG) Public Improvement District (PID) Subdivision Authority/Intergovernmental Agreements, and Road Resilience. Funds to be distributed to transportation, public health and recreation facilities.
- **Study a "Planning is the Answer" or "Planning is the Answer" program at Adams County**
 Create an online system where "long range planning issues" or "programs" require meeting to be held as outlined in development code program.

MAKING CONNECTIONS/SW ADAMS COUNTY PLANNING AND IMPLEMENTATION PLAN
 MAKING CONNECTIONS/PLANEACIÓN Y PLAN DE IMPLEMENTACIÓN EN EL SUROESTE DEL CONDADO DE ADAMS

Top 40 Projects: Development Areas

Los 40 Proyectos Principales: Áreas de Desarrollo

- **Project 1**
 ...
- **Project 2**
 ...
- **Project 3**
 ...
- **Project 4**
 ...
- **Project 5**
 ...
- **Project 6**
 ...
- **Project 7**
 ...
- **Project 8**
 ...
- **Project 9**
 ...
- **Project 10**
 ...
- **Project 11**
 ...
- **Project 12**
 ...
- **Project 13**
 ...
- **Project 14**
 ...
- **Project 15**
 ...
- **Project 16**
 ...
- **Project 17**
 ...
- **Project 18**
 ...
- **Project 19**
 ...
- **Project 20**
 ...
- **Project 21**
 ...
- **Project 22**
 ...
- **Project 23**
 ...
- **Project 24**
 ...
- **Project 25**
 ...
- **Project 26**
 ...
- **Project 27**
 ...
- **Project 28**
 ...
- **Project 29**
 ...
- **Project 30**
 ...
- **Project 31**
 ...
- **Project 32**
 ...
- **Project 33**
 ...
- **Project 34**
 ...
- **Project 35**
 ...
- **Project 36**
 ...
- **Project 37**
 ...
- **Project 38**
 ...
- **Project 39**
 ...
- **Project 40**
 ...



Financing Options

Opciones de Financiamiento

Special Use Tax (SUT) is a tax levied on certain property that is used, contracted, or shared in the taxing jurisdiction. Counties may impose a SUT on the following property and uses:

- **Real Estate**
 ...
- **Infrastructure Authority/Intergovernmental Agreement**
 ...
- **Improvement District (ID) or PID**
 ...

General Type	LDG or PID	LDG	PID
Special Use Tax	Yes	Yes	Yes
...

Special Use Tax (SUT) is a tax levied on certain property that is used, contracted, or shared in the taxing jurisdiction. Counties may impose a SUT on the following property and uses:

- **Real Estate**
 ...
- **Infrastructure Authority/Intergovernmental Agreement**
 ...
- **Improvement District (ID) or PID**
 ...

General Type	LDG or PID	LDG	PID
Special Use Tax	Yes	Yes	Yes
...

Projects: Infrastructure and Welby Neighborhood

Los 40 Proyectos Principales: Infraestructura- Estación de Welby y Vecindario de Welby



- **Project 1**
 ...
- **Project 2**
 ...
- **Project 3**
 ...
- **Project 4**
 ...
- **Project 5**
 ...
- **Project 6**
 ...
- **Project 7**
 ...
- **Project 8**
 ...
- **Project 9**
 ...
- **Project 10**
 ...
- **Project 11**
 ...
- **Project 12**
 ...
- **Project 13**
 ...
- **Project 14**
 ...
- **Project 15**
 ...
- **Project 16**
 ...
- **Project 17**
 ...
- **Project 18**
 ...
- **Project 19**
 ...
- **Project 20**
 ...
- **Project 21**
 ...
- **Project 22**
 ...
- **Project 23**
 ...
- **Project 24**
 ...
- **Project 25**
 ...
- **Project 26**
 ...
- **Project 27**
 ...
- **Project 28**
 ...
- **Project 29**
 ...
- **Project 30**
 ...
- **Project 31**
 ...
- **Project 32**
 ...
- **Project 33**
 ...
- **Project 34**
 ...
- **Project 35**
 ...
- **Project 36**
 ...
- **Project 37**
 ...
- **Project 38**
 ...
- **Project 39**
 ...
- **Project 40**
 ...

Top 40 Projects: Infrastructure- Pecos Station and Pecos Commercial District



Los 40 Proyectos Principales: Infraestructura- Estación de Pecos y Distrito Comercial de Pecos



Top 40 Projects: Infrastructure- Federal Station and Federal Boulevard



Los 40 Proyectos Principales: Infraestructura- Estación Federal y Avenida Federal





MAPAS DE CONEXIÓN, PLANIFICACIÓN Y PLAN DE IMPLEMENTACIÓN EN EL SUROESTE DEL CONDADO DE ADAMS



MAPAS DE CONEXIÓN, PLANIFICACIÓN Y PLAN DE IMPLEMENTACIÓN EN EL SUROESTE DEL CONDADO DE ADAMS



MAPAS DE CONEXIÓN, PLANIFICACIÓN Y PLAN DE IMPLEMENTACIÓN EN EL SUROESTE DEL CONDADO DE ADAMS



Public, Focus Group, TAC, Cities & Stakeholder Input

Date	Meeting Name/Description	Attendees
September 24, 2015	Project Introduction and Kick-Off Meeting	Internal stakeholders (approximately 20 people)
November 2, 2015	Technical Advisory Committee (TAC) Workshop 1	TAC members
Ongoing	Website/Email Blasts/Meeting Advertisements (includes Spanish Translation)	Residents and Businesses within study area
November 12, 2015	Planning Commission Study Session	Planning Commissioners
November 18, 2015	Focus Group Forum	Stakeholder List (196 invited, 60 attended)
November 18, 2015	Community Open House	Invitation mailed to all addresses within zip code (estimated 40 people in attendance)
November-December, 2015	ADCO Department 1-on-1's	Community & Economic Development, Transportation, Parks and Open Space, Adams County Economic Development, and Adams County Housing Authority
November 24, 2015	Board of County Commissioners (BOCC) Study Session	County Commissioners
December 2, 2015	ACED Infrastructure Task Force Meeting	Task Force members (approximately 20 in attendance)
December 14, 2016	Meeting with non-profits/stakeholders about Spanish outreach strategies	12 attendees
December 16, 2015	TAC Meeting: Phase 1 Overview and Update	TAC Members
February 3, 2016	TAC Meeting: Review Projects and Needs (3 Areas)	TAC Members
February 17, 2016	Community Workshop: Project and Needs Identification (3 Areas)	60 members of public/stakeholders
February 18, 2016	TAC Meeting: Review overlay of public input and opportunities mapping	TAC Members
March 3, 2016	1-on-1 with Commerce City	Commerce City Staff
April 7, 2016	1-on-1 with Water and Sanitation Districts	Water and Sanitation Staff
April 14, 2016	TAC Meeting: Review project identification/prioritization modeling and initial Top 40 Projects list; revise list	TAC Members
April 26, 2016	BOCC Study Session - review Top 40 Projects list and materials for May 2 Public Workshop	BOCC
April 28, 2016	Planning Commission Study Session - Update	PC
May 2, 2016	Top 40 Project Prioritization Interactive Public Workshop	Members of the Public and Stakeholders (100 in attendance)
May 3, 2016	TAC Meeting: Review Public Workshop Results	TAC
May 11, 2016	1-on-1 Meeting with ADCO Sustainability Coordinator	Staff
May 18-28, 2016	Cities Collaborative Forum- Identify Regional Priorities	Members of area Cities' Professional Staffs (Arvada, Thornton, Westminster, Denver, Commerce City) and ADCO staff attended (22 attendees)
May 19, 2016	Elyria-Swansa-Globeville Business Association	Approximately 20 Business Association members
May 23, 2016	City of Federal Heights 1-on-1	Federal Heights Planning Staff
May 25, 2016	City of Thornton 1-on-1	Thornton Planning, Engineering and Parks Staff
May 25, 2016	City of Northglenn 1-on-1	Northglenn Planning Staff
May 26, 2016	Adams County Fire District 1-on-1	Adams County Fire District Staff
June 2, 2016	East Sub-Area Business Stakeholder Meeting	20 members of public/stakeholders
June 2, 2016	East Sub-Area Resident Meeting	12 members of public/stakeholders
June 15, 2016	Hands-On Charrette	TAC and area Cities' representatives, Project Team (approximately 20 in attendance)
June 30, 2016	Top-10 Projects List 1-on-1s with Adams County Departments	Departments of Sustainability, Community & Economic Development, Transportation, and Parks and Open Space

Table 2-2: Public and Stakeholder Involvement Summary





MAKING CONNECTIONS

SW ADAMS COUNTY PLANNING AND IMPLEMENTATION PLAN

Be the link.

Come learn about the Top 10 Projects within the Planning Area of 52nd, 96th, Sheridan, and Brighton Blvd.

- Sidewalks • Parks • Trails •
- Roads • Affordable Housing •
- & More •

Contact Us:

(720) 523-6990

amontoya@
adcogov.org

Haciendo Conexiones

PLANEACIÓN Y PLAN DE IMPLEMENTACIÓN EN EL SUROESTE DEL CONDADO DE ADAMS

Sea la conexión.

Ven aprender sobre los Mejores 10 Proyectos en la zona de planeación delimitada por la calle 52, la calle 96, Sheridan Boulevard y Brighton Blvd.

- Aceras • Parques • Senderos •
- Calles • Viviendas Asequibles •
- & Más •

Contáctenos:

(303) 239-5325

informacion@
heinrich.com

COMMUNITY MEETING

Aug 16th from 6:30-8:00pm

Skyview Campus Student Center
8990 York Street, Thornton, CO 80229

To learn more about the projects and the upcoming public hearing, check out the project website.

www.adcogov.org/MakingConnections

REUNIÓN DE LA COMUNIDAD

El 16 de agosto de 6:30 a 8:00 p.m.

Skyview Campus Student Center
8990 York Street, Thornton, CO 80229

Para obtener más información sobre el proyecto y la próxima audiencia pública, visite el website del proyecto o contáctenos.

Top 10 List

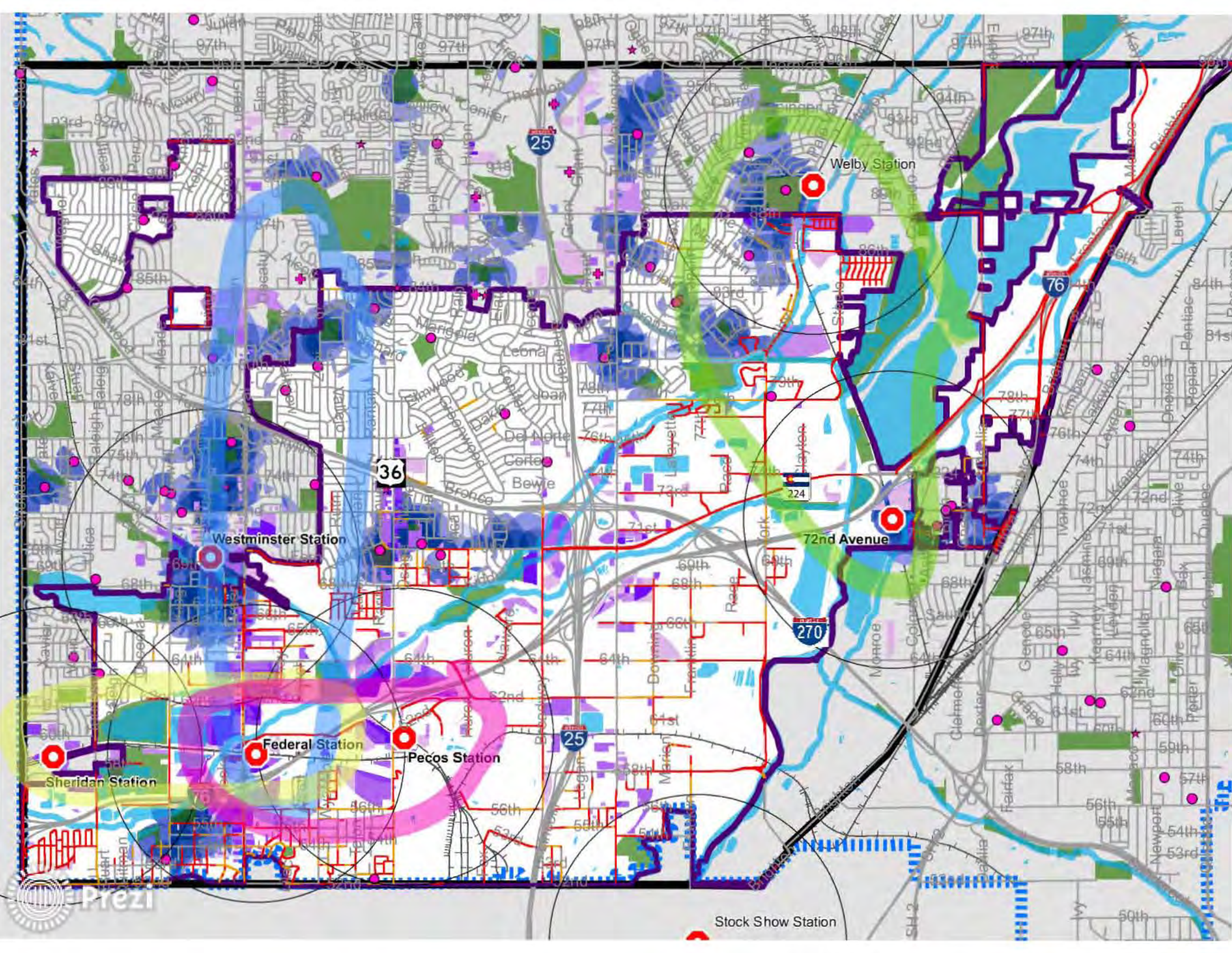
Project Name	Brief Description
Local Financing Study	A detailed study of all the existing tools available to the County, and those that may not be currently available but might be considered for lobbying the state to change regulations to allow. The study would focus on all the tools available, creative financing, and return on investment. The purpose is tri-fold: 1) would be to create a handbook for multi-departmental education and training; 2) to help identify specific tools that can be utilized for priority projects and implementation of the Top 10; 3) identify and align funders, financing and partners to implement the Top 10 projects
Plans to Projects Program (P2P)	A performance-based approach to planning, programming, and financial decision making that ensures available funds are used on the most productive projects to meet overall objectives. Projects will be selected for programming based on their contribution to the improvement of system performance compared to other project and multidisciplinary support.
Affordable Housing Policy	Create a comprehensive affordable housing policy for development. The policy should begin by focusing within one mile of a commuter rail station and primary existing transit lines. The policy should be expanded to the larger Making Connections Study Area and overall County after a baseline policy and applicability has been established. Additional study and concepts to explore include the relationship between the Balanced Housing Plan and the Affordable Housing Policy Study implementation program.
Sidewalk/Pedestrian Network Program	A prioritization process to fill the identified gaps in the overall sidewalk network through an in depth qualitative and quantitative analysis of existing sidewalk conditions and infrastructure. Would work collaboratively with the ADA program.
Complete Streets Policy and Standards	Develop a policy as well as a set of standards for all types of streets to promote a network of complete streets to provide safe and reliable transportation for all users.
Park and Trail Improvements	A set of improvements to different county parks and trails to bring urban vitality by activating open space and providing an effective regional network of multi-use paths for non-motorized travelers. Includes: Federal Boulevard & Federal Station Area (ADCO Multi-Use Trail Improvement/Development, Clear Creek to Jim Baker Reservoir; Welby Station and Welby Neighborhood Area (Clear Creek Trail Access - 5yr CIP, West of Railroad-78 th to I-76, New/Improved Park/Open Space, York and I-76 New Park/Park Improvement); Clear Creek Trail Replacement - 5 yr. CIP; Twin Lakes Park Renovation - 5 yr. CIP; Allen Ditch Trail, Connecting 84th Ave to Zuni
The Federal Connection	Comprehensive improvements to Federal Boulevard from 52nd Avenue on the south (border with Denver) to 72nd Avenue on the north (just inside Westminster). Nearly all of these previously identified projects would become part of a comprehensive PEL (Public and Environmental Linkages) Study effort.
The Clear Creek Connection	New multi-modal streets, parks and trails improvements, and general infrastructure improvements in the "Clear Creek TOD Plan" area along Clear Creek and between Federal Boulevard and Pecos Street, particularly connecting between the RTD G Line Federal Station and the RTD G Line Pecos Station.
The Sheridan Connection	Filling in missing sidewalk and trail connections to/from the RTD G Line Sheridan station, including connections to the RTD G Line Federal Station, to the Berkeley neighborhood to the south, and to the City of Arvada. Sheridan BRT Corridor efforts.
The Welby Connection	The Welby Connection includes the addition of newly constructed streets along with existing roadway and intersection improvements to enhance the connectivity between the Welby neighborhood to the RTD Welby and National Western Center Stations. These improvements will differentiate ideal truck routes versus pedestrian prioritized areas.



TOP 10 LIST

Project Name	Brief Description
Local Financing Study	A detailed study of all the existing tools available to the County, and those that may not be currently available but might be considered for lobbying the state to change regulations to allow. The study would focus on all the tools available, creative financing, and return on investment. The purpose is tri-fold: 1) would be to create a handbook for multi-departmental education and training; 2) to help identify specific tools that can be utilized for priority projects and implementation of the Top 10; 3) identify and align funders, financing and partners to implement the Top 10 projects
Plans to Projects Program (P2P)	A performance-based approach to planning, programming, and financial decision making that ensures available funds are used on the most productive projects to meet overall objectives. Projects will be selected for programming based on their contribution to the improvement of system performance compared to other project and multidisciplinary support.
Affordable Housing Policy	Create a comprehensive affordable housing policy for development. The policy should begin by focusing within one mile of a commuter rail station and primary existing transit lines. The policy should be expanded to the larger Making Connections Study Area and overall County after a baseline policy and applicability has been established. Additional study and concepts to explore include the relationship between the Balanced Housing Plan and the Affordable Housing Policy Study implementation program.
Sidewalk/Pedestrian Network Program	A prioritization process to fill the identified gaps in the overall sidewalk network through an in depth qualitative and quantitative analysis of existing sidewalk conditions and infrastructure. Would work collaboratively with the ADA program.
Complete Streets Policy and Standards	Develop a policy as well as a set of standards for all types of streets to promote a network of complete streets to provide safe and reliable transportation for all users.
Park and Trail Improvements	A set of improvements to different county parks and trails to bring urban vitality by activating open space and providing an effective regional network of multi-use paths for non-motorized travelers. Includes: Federal Boulevard & Federal Station Area (ADCO Multi-Use Trail Improvement/Development, Clear Creek to Jim Baker Reservoir; Welby Station and Welby Neighborhood Area (Clear Creek Trail Access - 5yr CIP, West of Railroad-78 th to I-76, New/Improved Park/Open Space, York and I-76 New Park/Park Improvement); Clear Creek Trail Replacement - 5 yr. CIP; Twin Lakes Park Renovation - 5 yr. CIP; Allen Ditch Trail, Connecting 84th Ave to Zuni





Welby Station

Westminster Station

72nd Avenue

36

270

25

Sheridan Station

Federal Station

Pecos Station

Stock Show Station





Table 8-5: The Federal Connection Detailed Planning Level Cost Estimate

The Federal Connection		Project Number	Cost Estimate Details	Planning Level Cost Estimate
<p>Brief Description: The Federal Connection refers to comprehensive improvements to Federal Boulevard from I-70 to US36. All of these previously identified projects would become part of a comprehensive PEL (Planning and Environmental Linkages) Study effort and would be further examined through that process including more accurate cost estimates and project phasing.</p> <p>Components to the "Federal Connection" included here:</p>				
1	Federal Boulevard Comprehensive Street Design (PEL)			
	•Comprehensive Street Design to include all items listed in this table.	i4, i68		\$1,500,000 For PEL Study
	•Sidewalk Gap Fill Project. Complete walkshed analysis.	i17		
	•Intersection Improvements: 64th/Federal, 70th/Federal, 72nd/Federal (Other intersection improvements may include 60th and/or 62nd as determined in the Clear Creek Connections)	i43, i44, i45		
	•Little Dry Creek Federal Blvd Bridge (under construction)	i1		
	•I-76 and Federal Ramp: Provide safe pedestrian crossing while preserving and enhancing the on/off-ramp	i29, i8		
	•Proposed Elm Court, 61st to 67th Ave (Multimodal)	i31		
2	Federal Boulevard Waterline Improvements			
	•Waterline Replacement Federal, 56th to 64th Ave	i95	Cost Estimate Provided by Adams County Long Range Planning through previous planning studies.	\$10,000,000
	•Improve Crestview area water capacity to accommodate new development	i49		
3	Floodplain Improvements			
	•Parcels to be Removed from Floodplain in proposed Phase B Urban Drainage Master Plan	i108	A Cost Estimate of \$11,400,000 was pulled from the Clear creek TOD Plan. However, this will not be incorporated because the estimate includes a bridge replacement along with the land acquisition.	-
				Total Cost
				\$11,500,000





Table 8-7: The Sheridan Connection Detailed Planning Level Cost Estimate

The Sheridan Connection		Project Number	Cost Estimate Details	Planning Level Cost Estimate
<p>Brief Description: The Sheridan Connection refers to primarily filling in missing sidewalk and trail connections to/from the RTD G Line Sheridan station, including connections to the RTD G Line Federal Station, to the Berkeley neighborhood to the south, and to the City of Arvada.</p> <p>Components to the "Sheridan Connection" included here:</p>				
1	Area Connectivity Improvements			
	•Lowell Boulevard Improvements: Finish connections from the Berkeley neighborhood north to the Sheridan Station.	i118	0.44 miles of Multi-Use Path	\$146,799
	•58th Avenue: Improve non-motorized connections to Sheridan Station.	i186	0.64 miles of Multi-Use Path	\$213,526
	•60th Avenue: Improve non-motorized connections to Sheridan Station.	i187, i173	0.64 miles of Multi-Use Path	\$200,181
	•64 th Avenue: Improve non-motorized connections between Sheridan Boulevard and Clear Creek Trail.	i37	2.44 miles of Multi-Use Path	\$814,069
2	Sheridan Corridor Improvements			
	•Multimodal Corridor Improvements, I-76 to 104th Ave, including roadway widening in areas and non-motorized and BRT improvements	i54, i67, i78	4 Miles of Widening 4 to 6 Lanes \$39,342,876 with 1.9 Miles of Multi-Use Path \$633,907 OR 4 Miles of Widening 6 to 8 Lanes \$46,947,424 with 1.9 Miles of Multi-Use Path \$633,907 Further Discussion with RTD to determine cost of BRT Service	\$39,976,783 OR \$47,581,331
3	Railroad Area Improvements			
	•Connecting the Sheridan station to the Federal Station generally along the alignment of the railroad tracks, or close in paralleling streets.	i123, i164	1.2 miles of Multi-Use Path \$400,362	\$400,362
	•Railroad crossing improvements: Complete intersection gap connectivity at intersections with Tennyson and Lowell.	i55	1.7 miles of Multi-Use Path \$567,180	\$567,180
				Total Cost
				\$42,318,900 or \$49,923,448





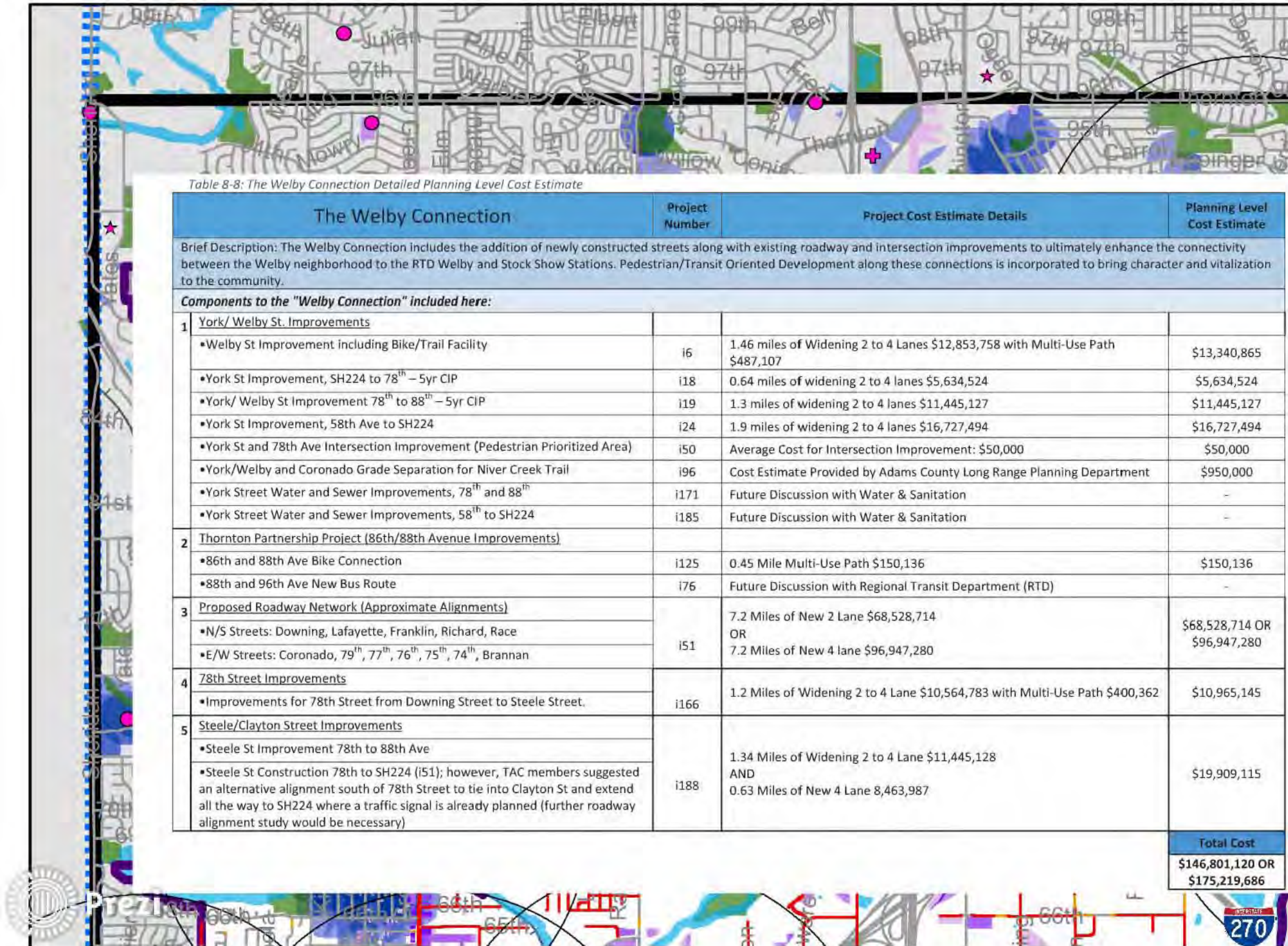
Table 8-6: The Clear Creek Detailed Planning Level Cost Estimate

The Clear Creek Connection		Project Number	Cost Estimate Details	Planning Level Cost Estimate
Brief Description: The Clear Creek Connection refers to new multi-modal streets, parks and trails improvements, and general infrastructure improvements in the "Clear Creek TOD Plan" area along Clear Creek and between Federal Boulevard and Pecos Street, particularly connecting between the RTD G Line Federal Station and the RTD G Line Pecos Station.				
Components to the "Clear Creek Connection" included here:				
1	<u>Proposed New Multimodal Roadways between Federal and Pecos Stations</u>	i32	1.1 Miles of New 4 Lane Road \$14,778,390 with Multi-Use Path \$366,999	\$15,145,389 OR \$18,434,299
	•Proposed Clear Creek Pkwy (runs 60th/Federal to 62nd/Pecos)		OR 1.1 miles New 6 Lane Road: \$18,067,300 with Multi-Use Path \$366,999	
	•60th Ave Improvements: Intersection Improvement at Federal as well as Waterline Replacement and Roadway Improvement for Federal to Zuni	i46, i93, i98	0.52 Miles of widening 2 to 4 lanes \$4,578,051 with Multi-Use Path \$173,490 Average Cost for Intersection Improvement \$50,000 Future Discussion with Water & Sanitation for Waterline Replacement Cost	\$4,801,541
	•Proposed "62nd Avenue" Corridor (runs 62nd/Federal to 60th/Pecos) (includes partial waterline replacement)	i38, i94, i106	2.28 Miles of New 4 lane Road \$30,631,572 with Multi-Use Path \$760,689 AND 0.71 Miles of Widening 2 to 4 Lanes \$6,162,761 with Multi-Use Path \$253,545 Future Discussion with Water & Sanitation for Waterline Replacement Cost	\$37,808,567
2	<u>Proposed Clay St</u>	i33	0.9 Miles of New 2 Lane Road \$8,566,089 with Multi-Use Path \$300,272	\$8,866,361
	•Federal Blvd to Little Dry Creek (Multimodal)			
3	<u>Pecos Street Improvements</u>	i146	1.3 Mile Multi-Use Path \$433,726	\$433,726
	•Pecos Bike/Trails Facility, 52nd Ave to I-76			
4	<u>Clay Community Outfall</u>	i165	Cost Estimate Provided by Adams County Long Range Planning	\$20,000,000
	•Phase 1 nearing completion. Phase 2 includes segment from 60th Ave south to Zuni at 59th Ave.			
				Total Cost
				\$87,305,584 OR \$90,594,494



Table 8-8: The Welby Connection Detailed Planning Level Cost Estimate

The Welby Connection		Project Number	Project Cost Estimate Details	Planning Level Cost Estimate
<p>Brief Description: The Welby Connection includes the addition of newly constructed streets along with existing roadway and intersection improvements to ultimately enhance the connectivity between the Welby neighborhood to the RTD Welby and Stock Show Stations. Pedestrian/Transit Oriented Development along these connections is incorporated to bring character and vitalization to the community.</p> <p>Components to the "Welby Connection" included here:</p>				
1	<u>York/ Welby St. Improvements</u>			
	•Welby St Improvement including Bike/Trail Facility	i6	1.46 miles of Widening 2 to 4 Lanes \$12,853,758 with Multi-Use Path \$487,107	\$13,340,865
	•York St Improvement, SH224 to 78 th – 5yr CIP	i18	0.64 miles of widening 2 to 4 lanes \$5,634,524	\$5,634,524
	•York/ Welby St Improvement 78 th to 88 th – 5yr CIP	i19	1.3 miles of widening 2 to 4 lanes \$11,445,127	\$11,445,127
	•York St Improvement, 58th Ave to SH224	i24	1.9 miles of widening 2 to 4 lanes \$16,727,494	\$16,727,494
	•York St and 78th Ave Intersection Improvement (Pedestrian Prioritized Area)	i50	Average Cost for Intersection Improvement: \$50,000	\$50,000
	•York/Welby and Coronado Grade Separation for Niver Creek Trail	i96	Cost Estimate Provided by Adams County Long Range Planning Department	\$950,000
	•York Street Water and Sewer Improvements, 78 th and 88 th	i171	Future Discussion with Water & Sanitation	-
	•York Street Water and Sewer Improvements, 58 th to SH224	i185	Future Discussion with Water & Sanitation	-
2	<u>Thornton Partnership Project (86th/88th Avenue Improvements)</u>			
	•86th and 88th Ave Bike Connection	i125	0.45 Mile Multi-Use Path \$150,136	\$150,136
	•88th and 96th Ave New Bus Route	i76	Future Discussion with Regional Transit Department (RTD)	-
3	<u>Proposed Roadway Network (Approximate Alignments)</u>			
	•N/S Streets: Downing, Lafayette, Franklin, Richard, Race	i51	7.2 Miles of New 2 Lane \$68,528,714	\$68,528,714 OR \$96,947,280
	•E/W Streets: Coronado, 79 th , 77 th , 76 th , 75 th , 74 th , Brannan		7.2 Miles of New 4 lane \$96,947,280	
4	<u>78th Street Improvements</u>			
	•Improvements for 78th Street from Downing Street to Steele Street.	i166	1.2 Miles of Widening 2 to 4 Lane \$10,564,783 with Multi-Use Path \$400,362	\$10,965,145
5	<u>Steele/Clayton Street Improvements</u>			
	•Steele St Improvement 78th to 88th Ave	i188	1.34 Miles of Widening 2 to 4 Lane \$11,445,128	\$19,909,115
	•Steele St Construction 78th to SH224 (i51); however, TAC members suggested an alternative alignment south of 78th Street to tie into Clayton St and extend all the way to SH224 where a traffic signal is already planned (further roadway alignment study would be necessary)		0.63 Miles of New 4 Lane 8,463,987	
			Total Cost	\$146,801,120 OR \$175,219,686





A recent picture of Federal Boulevard looking south. Extensive curbs, head-in parking, limited landscaping, lack of street trees do not provide a pedestrian friendly environment.



A sketch showing the same sidewalk with 'boulevard' street cross section implemented. Buildings are closer to the street, curbs are eliminated, service lane with parking buffers the pedestrians from the faster flowing traffic on Federal.



Federal Connection projects: Westminster TOD (1), Westminster station (2), TOD Park (3), Northgate project (4), Pomponio Terrace (5) XXX Park (6), Clear Creek TOD (7 and 8), Federal Station (9).



Current conditions (shown is the block between W.65th Avenue and W. Hawthorne Place): Extensive curbs, head-in parking, limited landscaping, lack of street trees do not provide a pedestrian friendly environment.



'Boulevard' implemented with no change in businesses on private lots: Service roads provide opportunities for street trees. Head-in parking and sidewalk coexist.



- ***Next Steps:***
- Feedback from BOCC, Public, TAC, Stakeholders (Focus Group + Cities) on Top 10-- August
- Develop 24 Page "Prospectus"
- Draft Plan out for referral September 2, 2016
- October & December public hearings
- Implementation: TOD Forums, CIP alignment, budgeting processes, grants, creative financing, etc.

www.adcogov.org/makingconnections



STUDY SESSION AGENDA ITEM

DATE: August 9, 2016
SUBJECT: Marijuana Permitting – Status and Next Steps
FROM: Norman Wright, Director of Community & Economic Development
AGENCY/DEPARTMENT: Community & Economic Development
ATTENDEES: Norman Wright, Director of Community & Economic Development Kristin Sullivan, Deputy Director of Community & Economic Development Nana Appiah, Development Review Manager Andrea Berg, Customer and Process Development Manager
PURPOSE OF ITEM: To update the board on the current results of our Marijuana permitting process and recommend next steps for improving the effort
STAFF RECOMMENDATION: Modify current lottery process to an open offering for all reserve ticket holders for the next round of applications

BACKGROUND:

In 2015, the Board approved a lottery system to select participants in our new marijuana permit process. The lottery system awarded three individuals in each category (Retail, Manufacturing, Cultivation, and Testing) of eligible land uses with 10 total permits to be issued. To date, seven permits have been issued and three remain unissued after three rounds of applications and 18 months of administration. The 18 months spent administering the process has generated some overall findings on the program itself and has also led to questions and requests from current applicants and pending ticket holders. Some of those questions lead us to reexamine the current process and recommend a new approach to the next round of applications, which will tentatively begin on September 13th, 2016.

AGENCIES, DEPARTMENTS OR OTHER OFFICES INVOLVED:

County Manager's Office

ATTACHED DOCUMENTS:

PowerPoint Presentation

FISCAL IMPACT:

Please check if there is no fiscal impact . If there is fiscal impact, please fully complete the section below.

Fund:

Cost Center:

	Object Account	Subledger	Amount
Current Budgeted Revenue:			
Additional Revenue not included in Current Budget:			
Total Revenues:			<hr/>

	Object Account	Subledger	Amount
Current Budgeted Operating Expenditure:			
Add'l Operating Expenditure not included in Current Budget:			
Current Budgeted Capital Expenditure:			
Add'l Capital Expenditure not included in Current Budget:			
Total Expenditures:			<hr/>


New FTEs requested: YES NO

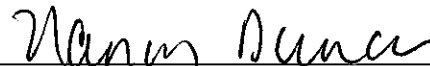
Future Amendment Needed: YES NO


Additional Note:

APPROVAL SIGNATURES:

APPROVAL OF FISCAL IMPACT:


Todd Leopold, County Manager


Budget / Finance


Raymond H. Gonzales, Deputy County Manager

Ed Finger, Deputy County Manager

Marijuana Licensing

Status and Next Steps

Study Session

August 9, 2016

Permits Issued Thus Far

Retail

3 permits issued, 3 licenses issued

Manufacturing

2 permits issued, 1 license issued

Cultivation

2 permits issued, 0 licenses issued

Testing

0 permits issued, 0 licenses issued

Permits Considered in Current Round

Manufacturing

1 permit under review, Mr. Spinosa

Cultivation

1 permit under review, Ms. Coto

Testing

1 permit under review, Mr. Scalia

Remaining Ticket Holders

Manufacturing

9 ticket holders in queue

Cultivation

10 ticket holders in queue

Testing

2 ticket holders in queue

Findings from Previous Applications

By design, there are few eligible sites

Available sites are even further limited by landowner hesitancy to lease to these uses

For cultivation, there is the obstacle of obtaining commercial water permits on ag land.

Options for Next Steps

- A. Continue with current process
- B. End current process and shift to “open market” in September
- C. Modify current process for next six months

Recommendation

Modify current process for next six months

- Open all remaining slots to all ticket holders
- Provide six month timeline for completion
- Accept a maximum of three applications for each remaining slot
- First-come basis for acceptance, all submittals electronic for timestamp
- Review and respond to same-day applications simultaneously
- Issue permits based on first complete/approved application received