

NOVEMBER | 2020

# ADAMS COUNTY YOUTH WORKBOOK

#YOUTHADCO



ADVANCING **ADAMS**  
PLANNING FOR A SHARED FUTURE



### COMPREHENSIVE PLAN

This plan will serve as an over-arching guide for Adams County to be “the most innovative and inclusive county in America.” It looks at issues like where to add new shops, restaurants, houses, apartments and parks, how to take care of the environment and how to make sure everyone is happy and can take care of their families.

This is the “big picture” plan.

### TRANSPORTATION MASTER PLAN (TMP)

This plan will try to find the best travel options for people of all ages and abilities. Options like walking, biking, taking the bus, train or light rail and even driving and connections to make it easier for everyone to get from place to place will be explored.

This is the plan that will “get us moving.”

### PARKS, OPEN SPACE & TRAILS PLAN (POST)

Isn't it great that we all get to use parks, open space and trails? This plan will help the people who take care of them make sure parks are fun, open spaces offer opportunities to enjoy nature, and that our trails are connected.

This is the plan that will help us all “enjoy the outdoors”.

## HELLO!

**Advancing Adams** is a project we are working on to update three plans to guide the future for Adams County. Working on these three plans at the same time will be like coloring an entire picture. The plans will make Adams County a safer, stronger, more friendly and cooler place for current and future generations.

## SIMON SAYS...

Follow the instructions on each page to help us make Adams County the best it can be! You will be learning about the three plans described in the colored boxes on this page and help us make them better. And remember, it's okay to ask an adult for help.

## PHOTOGRAPHY CHALLENGE

We would also love to see what you find. If you choose to accept it, your challenge is to take as you complete the activities on the following pages.

Keep your eye out for the following and make sure to take pictures of them:

1. Somewhere you would like to go back to again
2. An interesting thing (or creature) that moves

Then submit photos of those things and a photo of your favorite part of the activity to [AdvancingAdams@adcogov.org](mailto:AdvancingAdams@adcogov.org) for a chance to be featured on the project website with your name!



## TELL US MORE ABOUT YOU!

BEFORE WE GET STARTED, WE WOULD LOVE TO GET TO KNOW A LITTLE BIT ABOUT YOU.

### How old are you?

5 - 8 years old

13-15 years old

9 - 12 years old

Over 15 years old

### Check the race you identify with:

African American

White

Asian

Hispanic

Native American

Other \_\_\_\_\_

### What city, town or neighborhood do you live in?

---

### How long have you lived there?

---

### What do you love about your neighborhood?

### What do you love about living in Colorado?

## DID YOU KNOW?

Planners use different ideas when they work with communities to plan the future. The definitions below are good to keep close as you complete your adventure.

**EQUITY:** Just and fair inclusion into a society in which all can participate, prosper, and reach their full potential.

**EQUIDAD:** inclusión justa y equitativa en una sociedad en la que todos puedan participar, prosperar y alcanzar su máximo potencial.

**LIVABILITY:** sum of the factors that add up to a community's quality of life—including the built and natural environments, economic prosperity, social stability and equity, educational opportunity, and cultural, entertainment and recreation possibilities.

**HABITABILIDAD:** suma de los factores que se suman a la calidad de vida de una comunidad, incluidos los entornos naturales y construidos, la prosperidad económica, la estabilidad y equidad social, las oportunidades educativas y las posibilidades culturales, de entretenimiento y recreación.

**OPEN SPACE:** Lands with significant natural resource, scenic and/or wildlife habitat values; lands that may be use for trails, wildlife migration, preserved agricultural or ranch purposes; lands for outdoor recreation purposes limited to passive recreation uses; and lands with important values such as scenic and historic sites.

**ESPACIO ABIERTO:** Tierras con importantes recursos naturales, paisajes escénicos y / o hábitat de vida silvestre; tierras que pueden usarse para senderos, migración de vida silvestre, fines agrícolas o ganaderos preservados; terrenos para fines recreativos al aire libre limitados a usos recreativos pasivos; y tierras con valores importantes como sitios históricos y escénicos

**PASSIVE RECREATION:** Leisure time activities that don't need the use of specific facilities, built spaces, or equipment, such as birdwatching, picnicking, and walking.

**RECREACIÓN PASIVA:** actividades de tiempo libre que no necesitan el uso de instalaciones, espacios construidos o equipo específico, como la observación de aves, hacer un picnic y caminar.

**SMART GROWTH:** A development practice that encourages mixed use, diverse housing and transportation possibilities, higher density, preserving open and green spaces, and other features.

**CRECIMIENTO INTELIGENTE:** una práctica de desarrollo que fomenta el uso mixto, diversas posibilidades de vivienda y transporte, mayor densidad, preservación de espacios abiertos y verdes, y otras características.

**SUSTAINABILITY:** The practice of creating and maintaining conditions so as to meet the needs of the present without compromising on the ability to meet the same needs elsewhere or on the future.

**SOSTENIBILIDAD:** La práctica de crear y mantener las condiciones para satisfacer las necesidades del presente sin comprometer la capacidad de satisfacer las mismas necesidades en otros lugares o en el futuro.

**TRANSIT-ORIENTED DEVELOPMENT (TOD):** The practice of designing and planning areas where residential and commercial spaces are more conveniently connected with various forms of transportation to make communities more livable, vibrant, and accessible.

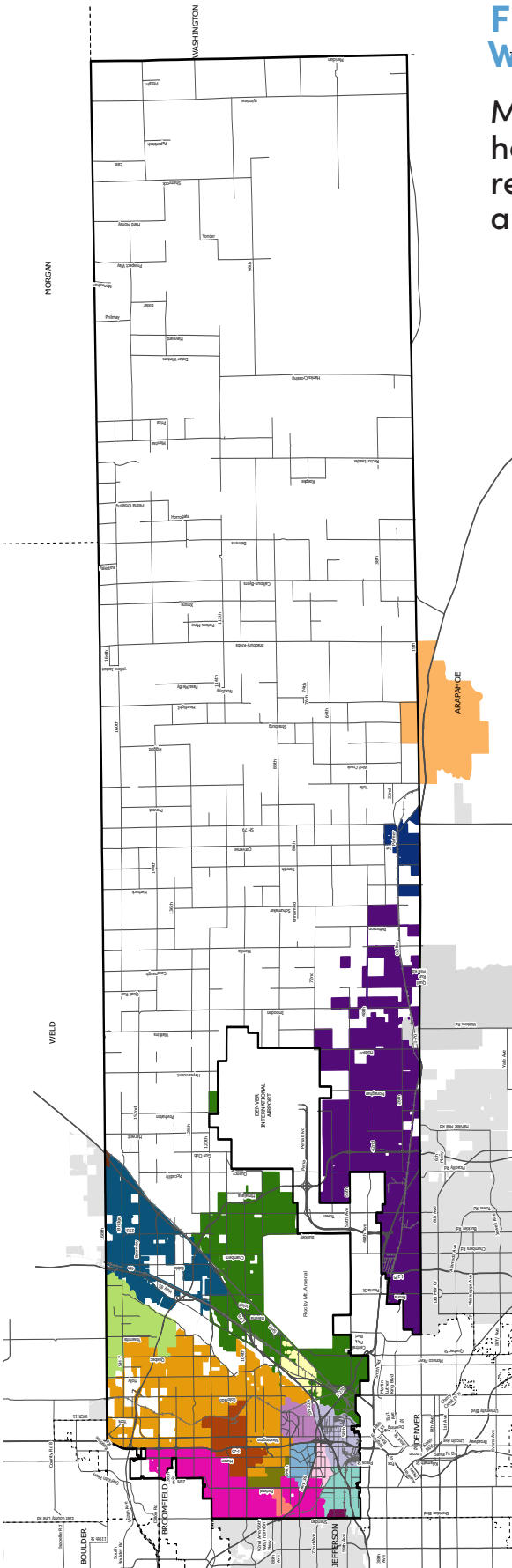
**DESARROLLO ORIENTADO AL TRANSPORTE PÚBLICO (TOD):** la práctica de diseñar y planificar áreas donde los espacios residenciales y comerciales están conectados de manera más conveniente con varias formas de transporte público para hacer que las comunidades sean más habitables, vibrantes y accesibles.

**URBAN DESIGN:** Involves the social, economic, functional, environmental, and aesthetic objectives that result in the plan or structure of a city, in whole or in part.

**DISEÑO URBANO:** Involucra los objetivos sociales, económicos, funcionales, ambientales y estéticos que dan como

**FLIP THIS MAP ON ITS SIDE TO FIND OUT WHAT IT'S ALL ABOUT!**

Maps help us understand where places are and how communities are connected through natural resources (like streams), transportation (like buses) and access to important services (like school).



If I could connect one place to another so it would be easy to go between them, I would connect \_\_\_\_\_ and \_\_\_\_\_.

**1 | Municipalities**

**Legend**

- Municipal Boundaries
- Railroads
- City Boundaries**
- Arvada
- Aurora
- Brighton
- Commerce City
- Federal Heights
- Lochbuie
- Northglenn
- Thornton
- Westminster
- Derby
- North Washington
- Shaw Heights
- Sherrelwood
- Strasburg
- Todd Creek
- Twin Lakes
- Watkins
- Welby
- Census Designated Places**
- Berkley

## HOW DO WE CREATE A STRONG COMMUNITY?



Adams County is YOUR county - we want to help continue to make it a great place to live and play - to do that, we need your help!

In the boxes below, write or draw answers to each question.

### SUSTAINABILITY

What is the most important way we can protect the natural environment in the future?

### EQUITY/INCLUSION

Can you think of a good way to make sure everyone in your community is treated fairly and equitably?

### ADAMS COUNTY'S FUTURE

What one word, a sentence or picture describes how you would like Adams County or your neighborhood to look like in the future?

## IMPROVE YOUR COMMUNITY!

If you worked for Adams County, what changes would you make to your community to make people happy?

Think about what people in your community would like to see in each area below. If you had the power to make their wishes come true, what would you do? Draw or write your ideas in the boxes below (the next page has some pictures that might help you get started).



### Did You Know?

Most of the schools in Adams County are on the **west** side of the county.

### PLACES TO LIVE (HOUSING)

A large, empty rounded rectangular box with a blue border, intended for drawing or writing ideas related to housing.

### FUN THINGS TO DO (FOR KIDS)

A large, empty rounded rectangular box with a blue border, intended for drawing or writing ideas related to fun things for kids.

### ACTIVITIES FOR GRANDPARENTS (OLDER ADULTS)

A large, empty rounded rectangular box with a blue border, intended for drawing or writing ideas related to activities for grandparents.

### PLACES FOR PEOPLE TO SHOP & EAT (BUSINESSES)

A large, empty rounded rectangular box with a blue border, intended for drawing or writing ideas related to places for people to shop and eat.



## PICK YOUR NEIGHBORHOOD INGREDIENTS!

When we plan neighborhoods, there are many ingredients that go into making them great, like really good cookies!

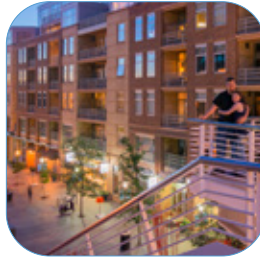
The 20-minute city is an urban planning idea where important places (like grocery stores and schools) and super fun places (like parks) are easy to get to within a 20-minute walk, bike or transit ride. Keeping this in mind, circle or select 5-10 images below that make up your idea of a cool place to live.



**Did You Know?**  
A **neighborhood** is the area surrounding a particular place like your home or school.



Single-Family Houses



Apartments



Grocery Stores



Office Buildings



Open Spaces



Nature Trails



Urban Gardens



Community Parks



Bike Lanes



Bus Stops



Transit Stations



Safe Street Crossings



Libraries



Community/  
Recreation Centers



Local Art



Local Shops

## HOW DO YOU TRAVEL?

We want to make sure everyone in Adams County can get to school, work, parks, the grocery store and many other places easily. To do that, we need to understand how you travel now and how you want to travel in the future.



How did you get to school the last time you went to a school building?  
Did you bike, walk, take the bus, go in a car, or use something else?

What is your favorite way to travel? (check or circle one)



Are there places you like to walk to with your family or friends? What are they?

In the box below, draw or type your favorite street, include its name and tell us what makes it special.



## HOW DO YOU WANT TO TRAVEL?

Taking public transit, riding your bike or walking are great ways to get out of the car, help decrease pollution and get exercise! With more and more people choosing these options, we want to know how you see the future.



**Did You Know?**  
Adams County has  
**14.5 miles** of bike trails.

What would make it easier for you to use public transportation (like buses or light rail) to get places?

In the box below, draw a picture of a type of transportation you would like to see more of in the future (some ideas to think about: self-driving cars, electric cars, electric bikes, electric scooters, flying taxis, underground roads, maybe spaceships). You can also write your ideas too!

## HOW DO YOU USE PARKS, OPEN SPACES & TRAILS?

Colorado is a great place to be outside. We want to know how you enjoy the great outdoors.

Check or circle the 3 activities you like the most below.



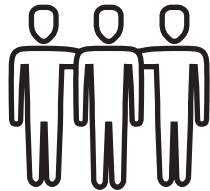
Relaxing



Bicycling



Hiking/Walking



Spending time with friends/family



Seeing wildlife



Playing sports



Exercising



Picnicking

Why are the three activities you circled above your favorite?

- 1. \_\_\_\_\_
- 2. \_\_\_\_\_
- 3. \_\_\_\_\_

What three things do you like best about the parks, open spaces and trails you currently visit?

- 1. \_\_\_\_\_
- 2. \_\_\_\_\_
- 3. \_\_\_\_\_

What are the first three words that come to mind when you think about parks, open spaces and trails?

- 1. \_\_\_\_\_
- 2. \_\_\_\_\_
- 3. \_\_\_\_\_





# ARE YOU READY TO GET OUTDOORS AND EXPLORE?

We want you to go to a park or open space near you and tell us what you find.

Name of open space, trail or park: \_\_\_\_\_

How long did it take to get here and how did you get here?: \_\_\_\_\_

## OBSERVE

### ANIMALS/INSECTS

Type:

Number:

Size:

Location:

### PLANTS

Type:

Number:

Size:

Location:

### TIME OF DAY

Morning

Afternoon

Evening

### WEATHER

Sunny

Cloudy

Windy

Hot /Warm

Cold /Cool

## SKETCH

If you could make any changes to this place to allow you, your friends and your family to enjoy nature more, what would they be? Draw a picture or write a short description below.

## IDENTIFY

Click or circle outdoor activities available in this space:



Relaxing



Picnicking



Spending time with friends/family



Bicycling



Playing sports



Exercising



Hiking/Walking



Seeing wildlife



Fishing



Events



## WHAT ADDITIONS WOULD YOU LIKE TO SEE IN YOUR PARKS?

OK - now, we want to know what types of parks and outdoor program improvements you want to see. Circle what you like below!



Are you WILD?  
[www.generationwild.com](http://www.generationwild.com)  
has some fun ideas for playing outside.



Stargazing



Community Garden



Adventure Play



Pollinator Gardens



Ropes Course



Fairy Garden



Hammock Grove



Picnic areas



Bike Park



Discovery Trail



Slack Line



Outdoor Classroom



Look-Out



Climbing Wall/  
Bouldering



Water Play



Musical  
Instruments



---

## WHAT COMES TO MIND WHEN YOU THINK ABOUT OPEN SPACES?

What three words describe what you think about parks, open spaces and trails?

---

A beautiful day at the park looks like this (draw a picture or write a short description below):



What do you think Adams County can do to make parks, open spaces and trails better?

# **THANK YOU** for sharing your thoughts and ideas for the future of Adams County with us!

When you're done, scan and upload your completed workbook (or take a picture of each page) and upload your pictures.

Send everything by January 25, 2021 to:

**[AdvancingAdams@adcogov.org](mailto:AdvancingAdams@adcogov.org)**

**PARKS, OPEN SPACE & TRAILS PLAN**

**COMPREHENSIVE PLAN**

**TRANSPORTATION PLAN**



ADVANCING **ADAMS**  
PLANNING FOR A SHARED FUTURE

