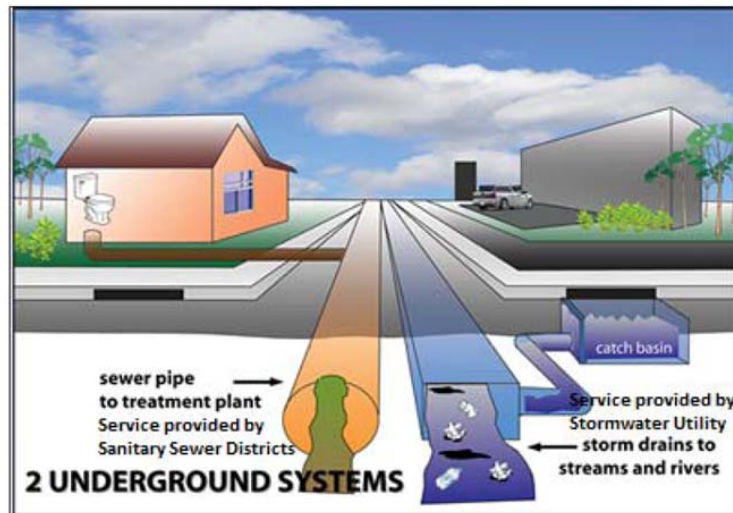


Stormwater Utility FAQ

[What is stormwater?](#)

Stormwater is runoff from a rainstorm or melting snow. City landscapes - unlike forests, wetlands, and grasslands that trap water and allow it to filter slowly into the ground - contain great areas of impermeable asphalt and concrete surfaces that prevent water from seeping into the ground. Stormwater also picks up many pollutants as it travels across the hard surfaces. These pollutants include: motor oil, pesticides, fertilizers, trash and sediment that can harm the water quality of our local creeks, rivers and lakes. As runoff travels over urban landscapes, its flow increases and water quality decreases.



[Why is important to manage stormwater?](#)

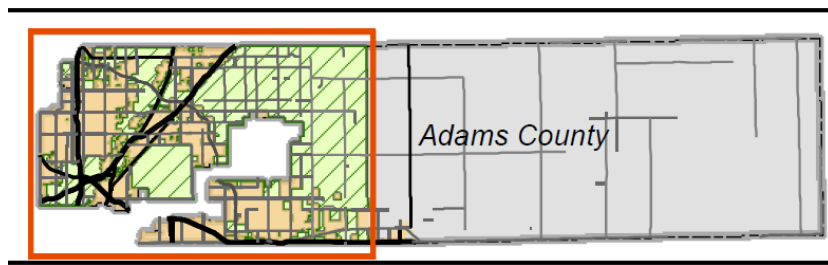
Adams County, like other communities, manages stormwater to:

- 1) Reduce flood risks that may impact public safety and loss or damage of property; and
- 2) Prevent polluted stormwater from flowing directly into rivers, lakes and streams.

[What is the Stormwater Utility?](#)

Adams County Stormwater Utility (SWU) was established in 2012. The SWU assesses an annual user-fee to approximately 27,000 properties within the service area. The SWU is an independent funding mechanism to pay for the cost of services related to the implementation of the stormwater management program.

Stormwater Utility Area (Green)



Overview Map

What services are provided?

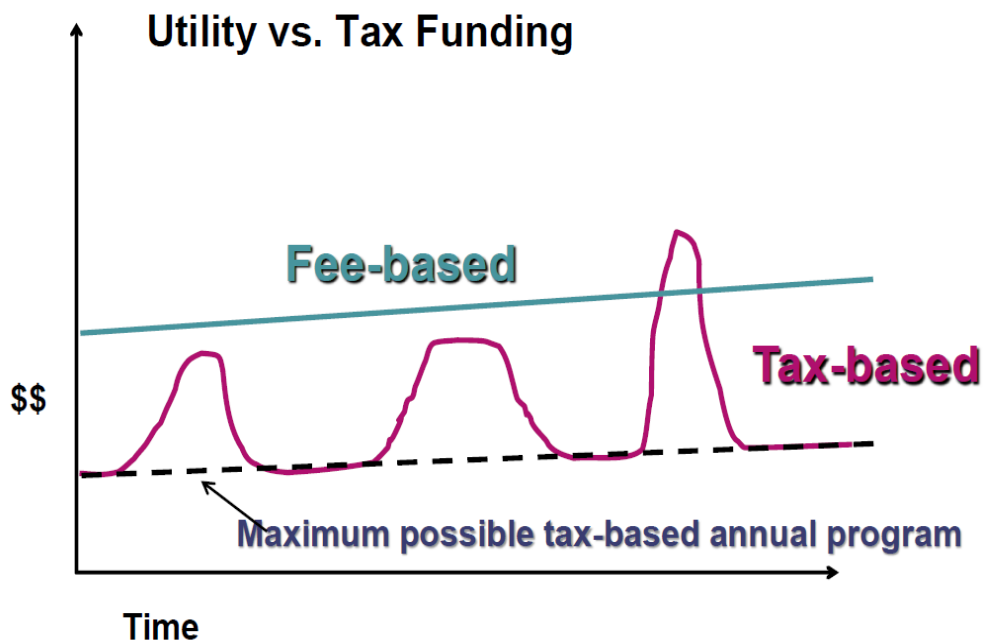
The following services are provided:

- 1) Stormwater Quality Program to comply with Adams County's Municipal Separate Storm Sewer System (MS4) discharge permit requirements.
- 2) Storm sewer cleaning services, which involve operation and maintenance of existing public drainage infrastructure.
- 3) Capital drainage improvement program, which involves design and construction of new infrastructure
- 4) Engineering design and Master Drainage Plans
- 5) Annual billing and customer service

Is the annual stormwater utility fee tax deductible?

No, the stormwater utility fee is not tax deductible and cannot be claimed on your taxes. This fee should be treated as any other utility service such as water, sewer, or electricity.

Stormwater Utility Basics: *Advantages - Stable*



Who is required to pay the stormwater utility fee?

All property owners in Unincorporated Adams County within the SWU service area are required to pay. This includes non-profit entities such as churches, schools and institutions, as well as properties owned by Adams County, the State of Colorado, and the federal government.

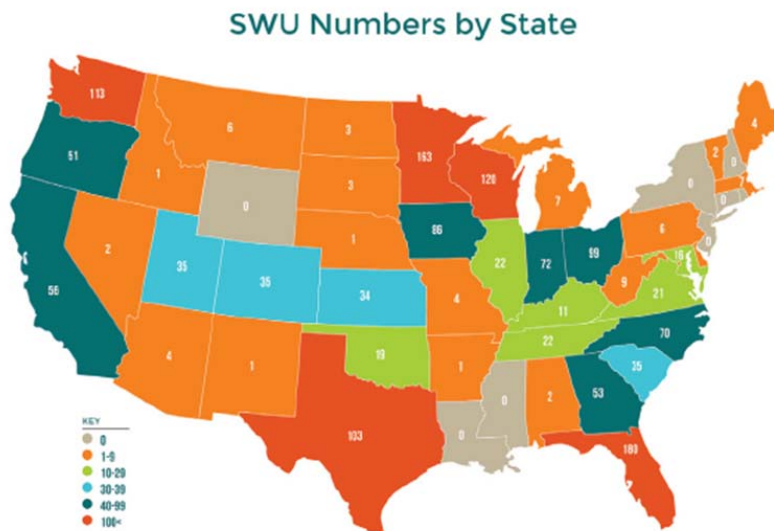
[How are other Colorado communities addressing stormwater issues?](#)

Most communities surrounding Adams County have established similar stormwater utilities. Others use dedicated property taxes, development fees, sales taxes and other sources in various combinations to finance their stormwater management programs. Approximately 35 communities in Colorado have stormwater utilities that incorporate fees comparable to the stormwater fee that Adams County established.

Community	Monthly Fee	Year Created
Adams County	\$6.91	2013
Arvada	\$4.17	2002
Aurora	\$6.42	2002
Berthoud	\$3.75	1989
Boulder	\$7.69	1983
Brighton	\$2.76	2011
Canon City	\$5.46	2004
Castle Rock	\$6.65	2002
Colorado Springs	\$0.00	2005
Denver	\$7.38	1980
Englewood	\$1.39	
Erie	\$5.00	2003
Evans	\$4.08	1998
Federal Heights	\$3.15	2001
Firestone	\$0.00	2009
Fort Collins	\$14.26	1986
Fountain	\$0.00	
Frederick	\$6.23	2008
Golden	\$3.20	1997
Greeley	\$5.24	2002
Idaho Springs	\$0.00	2006
LaFayette	\$4.27	2007
Lakewood	\$1.98	1998
Larimer County	\$0.00	
Littleton	\$2.00	1986
Longmont	\$13.05	1984
Louisville	\$2.00	2007
Loveland	\$9.10	1987
Northglenn	\$2.00	2004
Parker	\$6.00	1999
Pueblo	\$2.40	2003
Sheridan	\$3.00	2005
Southeast Metro Stc Authority	\$8.02	2006
Westminster	\$3.00	2001
Windsor	\$3.98	2003
Woodland Park	\$2.00	1994
Washington	\$0.00	

[How are other communities addressing stormwater issues nation-wide?](#)

Most states have established similar stormwater utilities. Others use dedicated property taxes, development fees, sales taxes and other sources in various combinations to finance their stormwater management programs

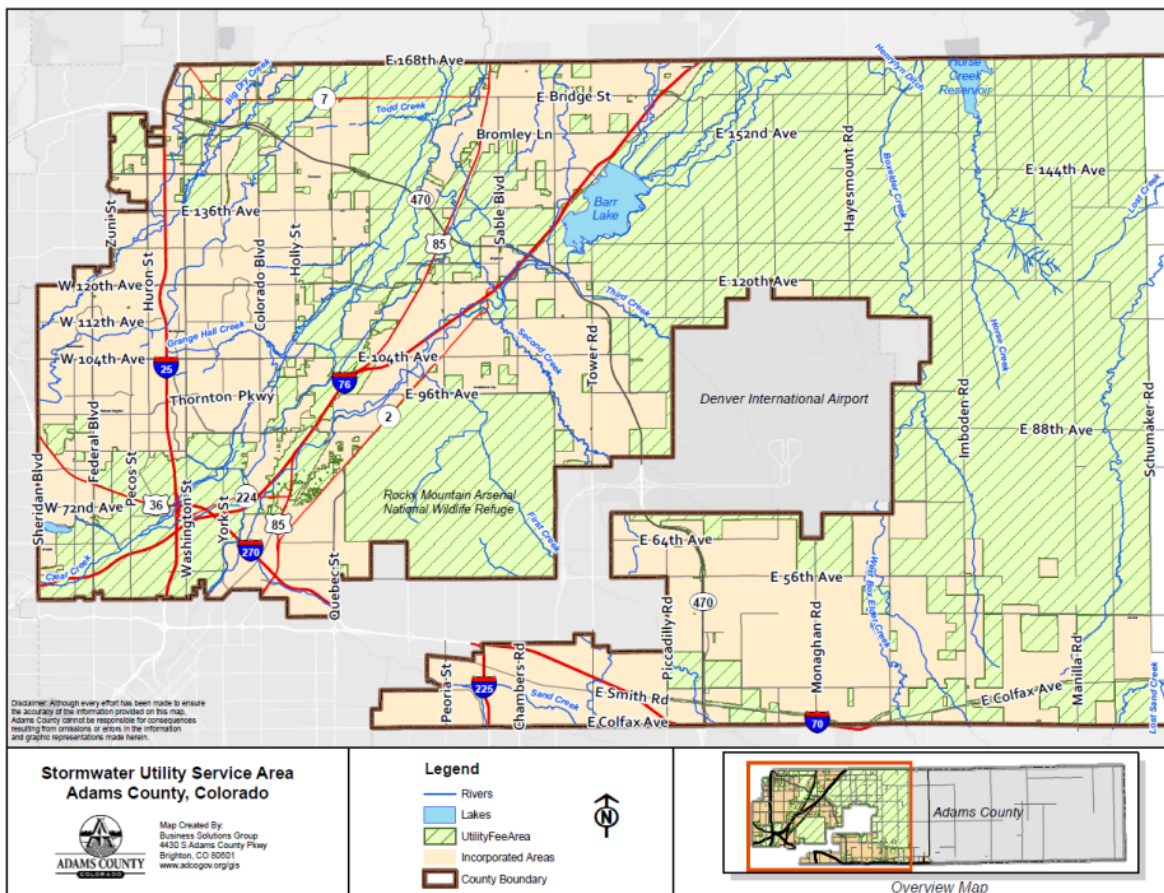


[How does the Stormwater Utility fee differ from the fee I pay to the Urban Drainage and Flood Control District?](#)

Urban Drainage and Flood Control District (UDFCD) charges a mill levy tax on all property in Adams County to cover 50 percent of the cost of large, regional and multi-jurisdictional projects across the Denver metropolitan area. This differs from the localized projects that the Adams County's Stormwater Utility (SWU) addresses. Adams County may contribute SWU revenues towards some of the UDFCD regional stormwater infrastructure projects within the SWU service area.

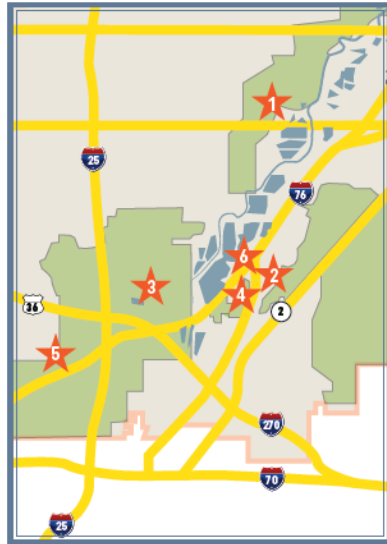
[What is the Stormwater Utility Service Area?](#)

The [Stormwater Utility \(SWU\) Service Area](#) encompasses properties within Unincorporated Adams County. This area is bordered on the north, south and west by the County boundary. The eastern boundary of the service is bordered by Schumaker Road (near Denver International Airport). This area excludes any properties within the city limits of the following municipalities: Aurora, Northglenn, Thornton, Commerce City, Brighton, Westminster, Federal Heights, Arvada, Bennett, Lochbuie. The SWU provides public drainage services for about 27,000 properties and extends about 257 square miles (164,480 acres). This service area is subject to change as cities annex unincorporated areas within in the SWU and County development increases and; therefore, impervious area increases east of Schumaker Road. Within the service area, the County is responsible for maintaining approximately 1,285 inlet boxes, 51.83 miles of storm sewer pipeline and 15 ponds.



[What types of construction projects are funded by this fee?](#)

Drainage studies conducted in cooperation with the Urban Drainage and Flood Control District show back in 2012 that there was a backlog of approximately \$326 million in stormwater construction and remediation projects in the service area. The types of infrastructure projects the Stormwater Utility will fund include construction and upgrade of channels, culverts, storm sewers and other tributary improvements.



■ County Stormwater Utility Area
■ Incorporated cities in Adams County

Projects Receiving Funds from the Stormwater Utility

- ★ 2014/2015: Brantner Gulch crossing at Riverdale Rd. Completed: \$310,000 (multi-agency total project cost: \$1.7 million)
- ★ 2016/2017: Kenwood Project - 77th Ave. from Hwy. 85 to Kenwood St. Completed: \$540,000 (multi-agency total project cost: \$3 million)
- ★ 2017/2018: Hoffman Drainageway Improvement Project – starts at 88th Ave. across Rainbow St. and ends at Steele St. Under construction: \$3.3 million (multi-agency total project cost: \$6 million)
- ★ 2019: Dahlia St. Project – Dahlia St. from Hwy. 224 to I-76. To be completed upon Board of County Commissioners funding approval: \$3 million (multi-agency total project cost: \$8 million)
- ★ 2018/2019: Clear Creek Drop Structure. To be completed: \$750,000 (multi-agency total project cost: \$3 million, initially approved)
- ★ 2020: Dahlia Pond Improvements – pond located at southwest corner of I-76 and U.S. Hwy. 6. To be completed: \$3 million

[How does the Stormwater Utility prioritize construction projects?](#)

The Stormwater Utility (SWU) regularly assesses the priority of capital construction needs across the service area according to cost of project, impact and benefit/cost ratio. Capital projects have been identified across Unincorporated Adams County, such as Little Dry Creek Park Storm Sewer, Third Creek Floodplain Culvert, Box Elder Creek Stormwater Channel, Bear Gulch Tributary Improvements and Brantner Gulch Stormwater Channel. If you would like to be involved with making recommendations to the county regarding the priority of capital improvement projects and infrastructure needs for the SWU please apply for the Stormwater Advisory Board by contacting the Stormwater Management Division.

[Who fixes clogged storm drains?](#)

Report any clogged storm drains to Adams County Stormwater Management Division at 720-523-6400. We will identify the ownership of the structure and contact the responsible entity as applicable (HOA, CDOT, Commercial Property Manager, Adams County Public Works Department, etc).

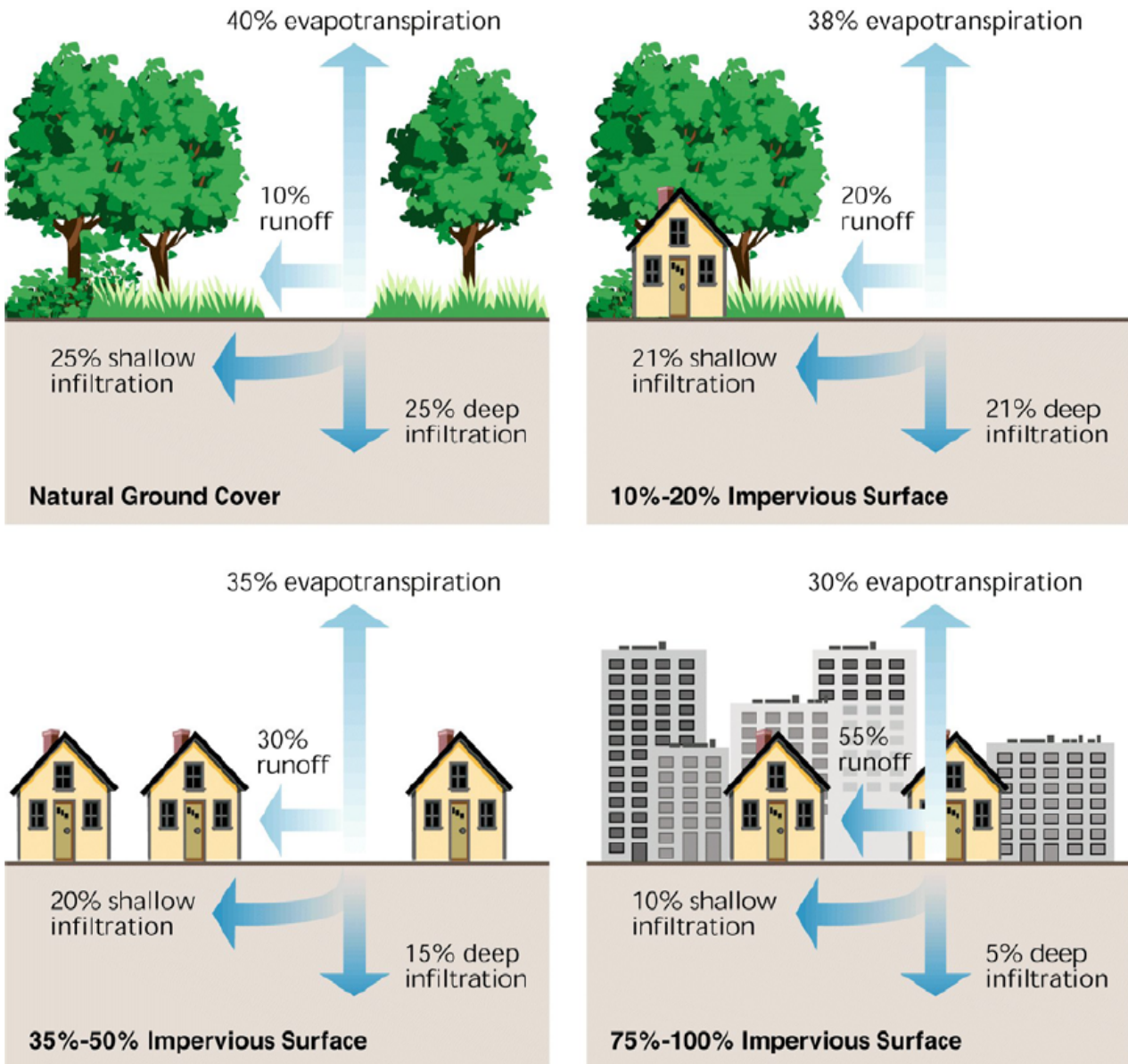
[How much does the Stormwater Utility collect per year?](#)

The Stormwater Utility collects approximately \$2.2 million per year.

[No runoff from stormwater drains off my property, why do I have to pay?](#)

Soils act similar to a “sponge”. Soils, like a sponge, can only absorb a certain amount of water during a rain event. Once the soil (or sponge) is full, the rest leaves as run-off. Also, the benefits of the Stormwater Utility (SWU) are realized by all property owners within the SWU service area. Capital improvement projects will benefit everyone by reducing flood impacts to roadways as well as other public infrastructure.

Increase in stormwater runoff with urbanization



In Stream Corridor Restoration: Principles, Processes, and Practices (10/98).
By the Federal Interagency Stream Restoration Working Group (FISRWG) (15 Federal agencies of the U.S.)

[What is "impervious area"?](#)

Impervious areas are surfaces where water cannot infiltrate freely. Examples of impervious surfaces include, but are not limited to laid asphalt or concrete and fully enclosed man-made structures. A property's impervious area is the most significant factor affecting both stormwater quality and quantity.

[How is the fee determined?](#)

Typical Single Family Home Example:

Step 1: Calculate the total square feet of impervious area

1,100 sq ft (roof)
+750 sq ft (driveway)
+300 sq ft (patio)
+100 sq ft (sidewalk)

2,250 sq ft total impervious area

Step 2: Calculate the corresponding SWU fee: the total square footage of impervious surface is multiplied by the rate (\$0.02004/sq ft)

2,250 sq ft × \$0.02004/sq ft = \$45.09/year

Step 3: Compare the calculated SWU fee with the annual cap fee for your property type. The amount you pay is the lesser of the two.

Note: The calculation above does not apply for multi-family properties such as apartment complexes, or condominiums. In this case, the SWU fee calculated in step 2 is divided by the total number of existing units.

[Is there a way to reduce my stormwater fee?](#)

Yes. Stormwater fees can be reduced through the Adams County's Stormwater Credit Program. The credit program offers a reduction in fees up to 65 percent to qualified properties which own and maintain a private pond, or manage stormwater runoff on their property. Fees can also be reduced through the replacement of excess impervious area (such as unused parking lots) with landscaped green space.

[What is the billing cycle?](#)

The Stormwater Utility fee is collected annually. The stormwater utility fee statements are mailed during the first week of April each year.

[My mailing address is wrong, how do I change it?](#)

Please contact Adams County Assessor's Office.

[Why do I have an interest charge?](#)

Based on our records, there is a previous unpaid balance. All late payments are assessed interest at the rate of 8 percent per annum, which is accrued daily. The interest charges will be assessed at the time a delinquency statement is issued. Please pay the bill on time to avoid interest charge.

[Why is the same parcel number listed twice with the same Invoice and Due date for the same year?](#)

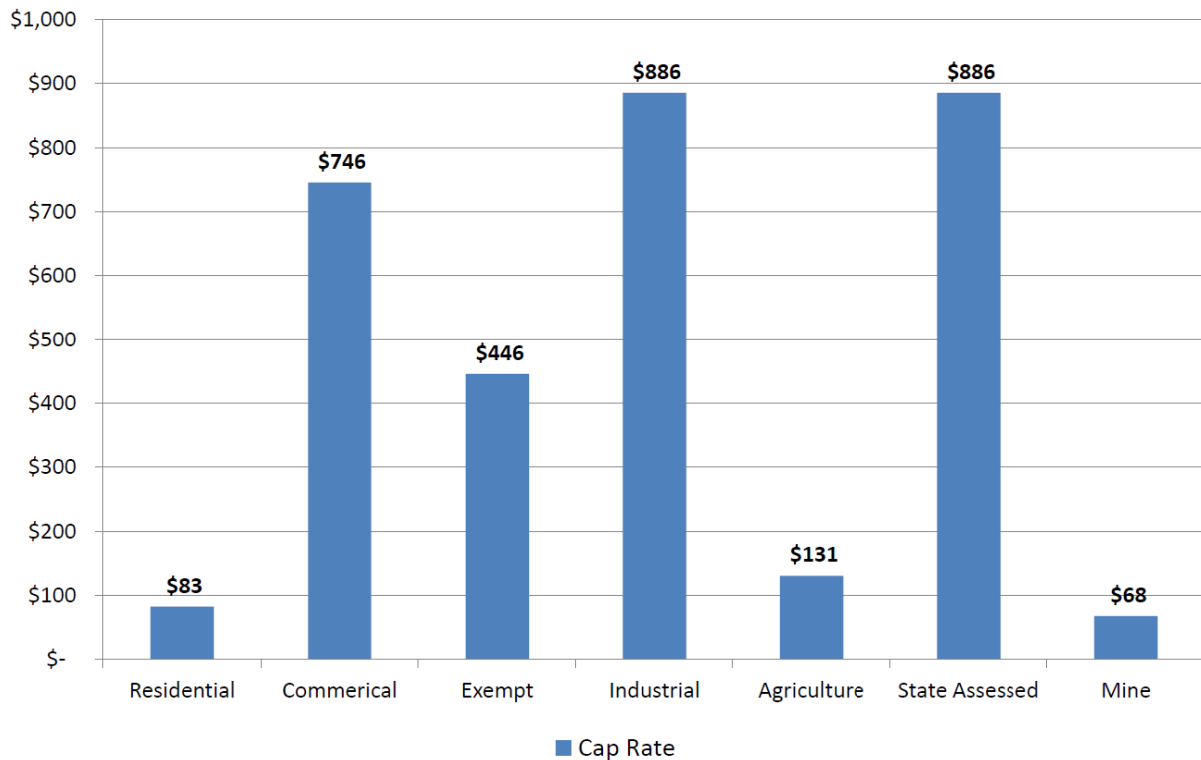
You may be an owner of a parcel number with multiple accounts. If a parcel has more than one Assessor's R-account associated with it we have divided the fee equally among the accounts on record. This system was created so you do not pay double fees.

[Why is my bill less than the calculated amount?](#)

A cap fee rate structure, based on property type classification, has been adopted by the Board of County Commissioners. If the calculated fee for your property is more than the cap fee associated with your property type, you pay the cap fee rate.

Stormwater Utility Fee Adjustment

Fee Cap by Property Classification Type



[Can I pay online?](#)

YES! You can pay online



Pay online at adcogov.org/stormwater. It's free, quick, and easy!

Save time and money on postage. You will need to enter your customer number.

Pague online adcogov.org/stormwater. ¡Es gratis, rápido, y fácil!

Ahorre tiempo y dinero en estampillas. Necesitará el número de cliente.