

TWIN LAKES BOTTOMLANDS

RESIDENTIAL TRAIL CONNECTION AND TRAILHEAD

Trail connections from Scott Carpenter Middle School and Valley View Elementary open up new outdoor learning environments in the Twin Lakes Bottomlands. New walking trails provide access to wildlife areas while preserving wildlife habitats.

PECOS STREET

MULTI-MODAL RESIDENTIAL TRAIL CONNECTION

Improved street and underpass crossings, pedestrian connection and neighborhood trail signage for Pecos Street Station, Berkeley/Zuni and Sunnyside neighborhoods.

LOWELL BOULEVARD

RESIDENTIAL TRAIL CONNECTION AND TRAILHEAD

Complete multi-use trail connections to Jim Baker Reservoir, Clear Creek Valley Park, Lowell Ponds and Carl Park Community Center. Neighborhood trail signage helps navigation from Westminster, Arvada and Aloha Beach, and from Berkeley and Regis University.

SOUTH PLATTE RIVER CONFLUENCE

REGIONAL TRAIL CONNECTION AND TRAILHEAD

Parking, restroom and pedestrian improvements recommended. Future development should expand pedestrian and bicycle access from South Platte River and Commerce City Commuter Rail. Preferred bike share location.

WASHINGTON STREET

EMERGENCY ACCESS

New access for Emergency Services. Potential connections to planned detached walk. Future development should seek to provide additional trail access.

YORK STREET

RESIDENTIAL TRAIL CONNECTION AND TRAILHEAD

Planned improvements include a new sidewalk and trail connection. Additional neighborhood signage recommended.

COMMERCE CITY

MULTI-MODAL RESIDENTIAL TRAIL CONNECTION

Future development should expand pedestrian and bicycle access from South Platte River and Commerce City Commuter Rail. Examining potential access improvement options using existing infrastructure.

CIRCULATION + ACCESS

- TRANSIT CENTER
- SCHOOL
- CLEAR CREEK TRAIL
- ROADWAY TRAILS
- TRAILHEAD / TRAIL ACCESS
- COUNTY-OWNED LAND
- RAILWAY
- LIGHT RAIL CORRIDOR
- INTERSTATE HIGHWAY
- PROPOSED TRAIL
- PROPOSED CROSSING AREA
- REGIONAL TRAIL HUB

LITTLE DRY CREEK LAKE

REGIONAL CONNECTION AND TRAILHEAD

A county-owned parcel with that connects the US-36 bikeway, Westminster Station, Arvada and Westminster. Recommend future expanded parking and trailhead amenities. Future connection along creek and across rail lines should be added if/when surface mining operations cease. Wayfinding improvements are needed until trail connects. Preferred bike share location.

FEDERAL BOULEVARD

MULTI-MODAL RESIDENTIAL TRAIL CONNECTION

Planned improvements at underpass connect neighborhood routes with Clear Creek Station. Additional lighting, wayfinding and right-of-way enhancements for neighborhood cyclists recommended. Preferred bike share location.

SHERIDAN BOULEVARD

REGIONAL TRAIL CONNECTION AND TRAILHEAD

Improved connection with Gold Strike Park, neighborhood trail signage, safe pedestrian and cyclist crossings. Preferred bike share location.

TENNYSON STREET

RESIDENTIAL TRAIL CONNECTION AND TRAILHEAD

Add safe pedestrian and bicycle connections to Arvada Gold Strike Station, Clear Creek Valley Park and Jim Baker Reservoir. Enhanced HAWK crossing at Clear Creek recommended, along with nearby neighborhood signage.



RALSTON CREEK CONFLUENCE

REGIONAL OPEN SPACE

An iconic connection between Arvada's Gold Strike Park and Adams County Open Space, including stream restoration, paved trails, public art, picnic areas, safe river access, informational signage about gold panning and the history of Clear Creek.



LOWELL PONDS

WATER-FOCUSED ECOLOGICAL AREA



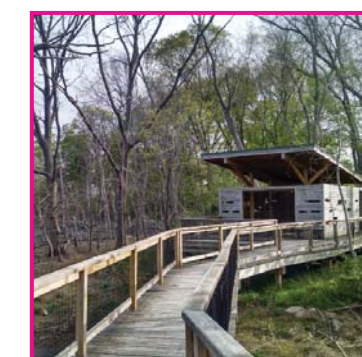
A diverse wetland and aquatic habitat area that includes educational signage, formalized paved and soft trails, wildlife viewing areas, and may also be a location for stocked fishing areas. This site is an opportunity for partnerships between Adams County, Colorado State Wildlife, and the Hyland Hills Recreation District.



CLEAR CREEK

STATION AREA PARK

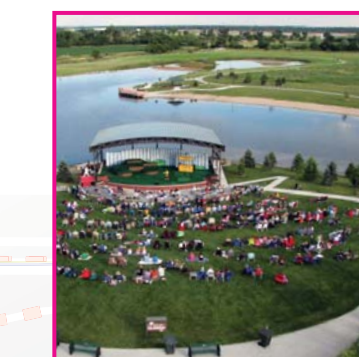
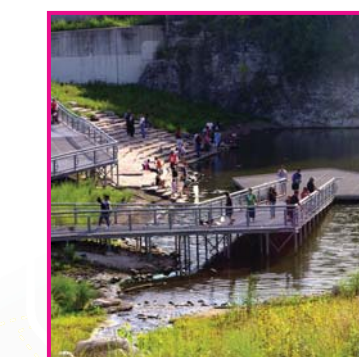
Soon to be a transit hub for recreationalists and commuters, Clear Creek Station area provides an opportunity for specialized water recreation and low-impact recreational retail such as rental and repair shops, coffee stands, etc. Wetland and floodway buffers areas are currently limited and should be restored.



TWIN LAKES BOTTOMLANDS

HABITAT-FOCUSED ECOLOGICAL AREA

This site is ecologically rich and uniquely diverse. Cleanup, revegetation and maintenance will enhance habitat. Stormwater networks create an opportunity for stormwater parks and wetland areas. Trail connections to Valley View Elementary and Scott Carpenter Middle School can connect these schools to outdoor classrooms and wildlife viewing areas.



CLEAR CREEK CONFLUENCE

REGIONAL OPEN SPACE

An iconic destination that merges two regional trail corridors. Future development plans should engage both rivers and provide additional resources for specialized recreation and special events.

ZONE 3

ZONE 1

ZONE 2

CLEAR CREEK WETLANDS

NATURE PRESERVE

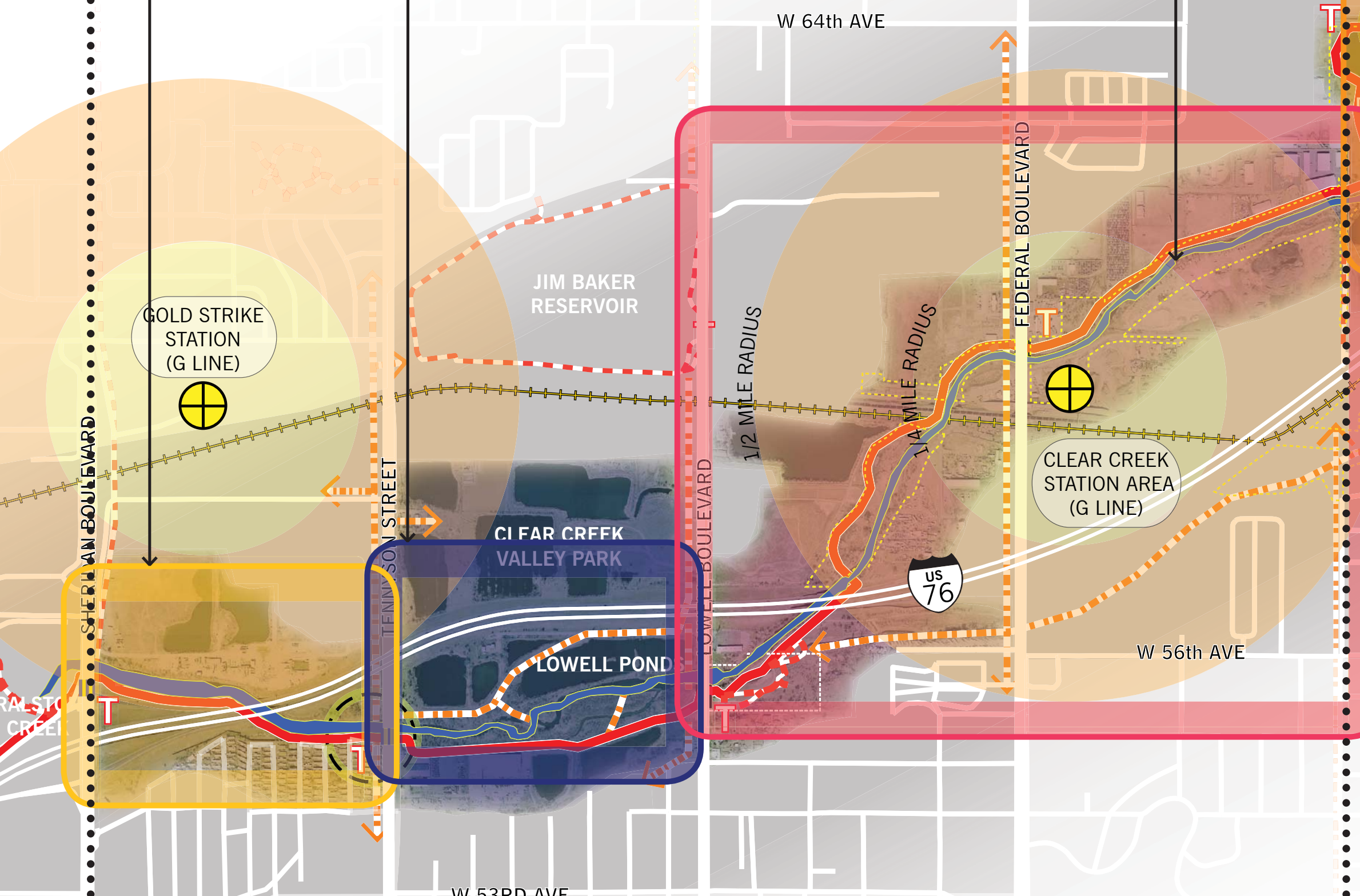
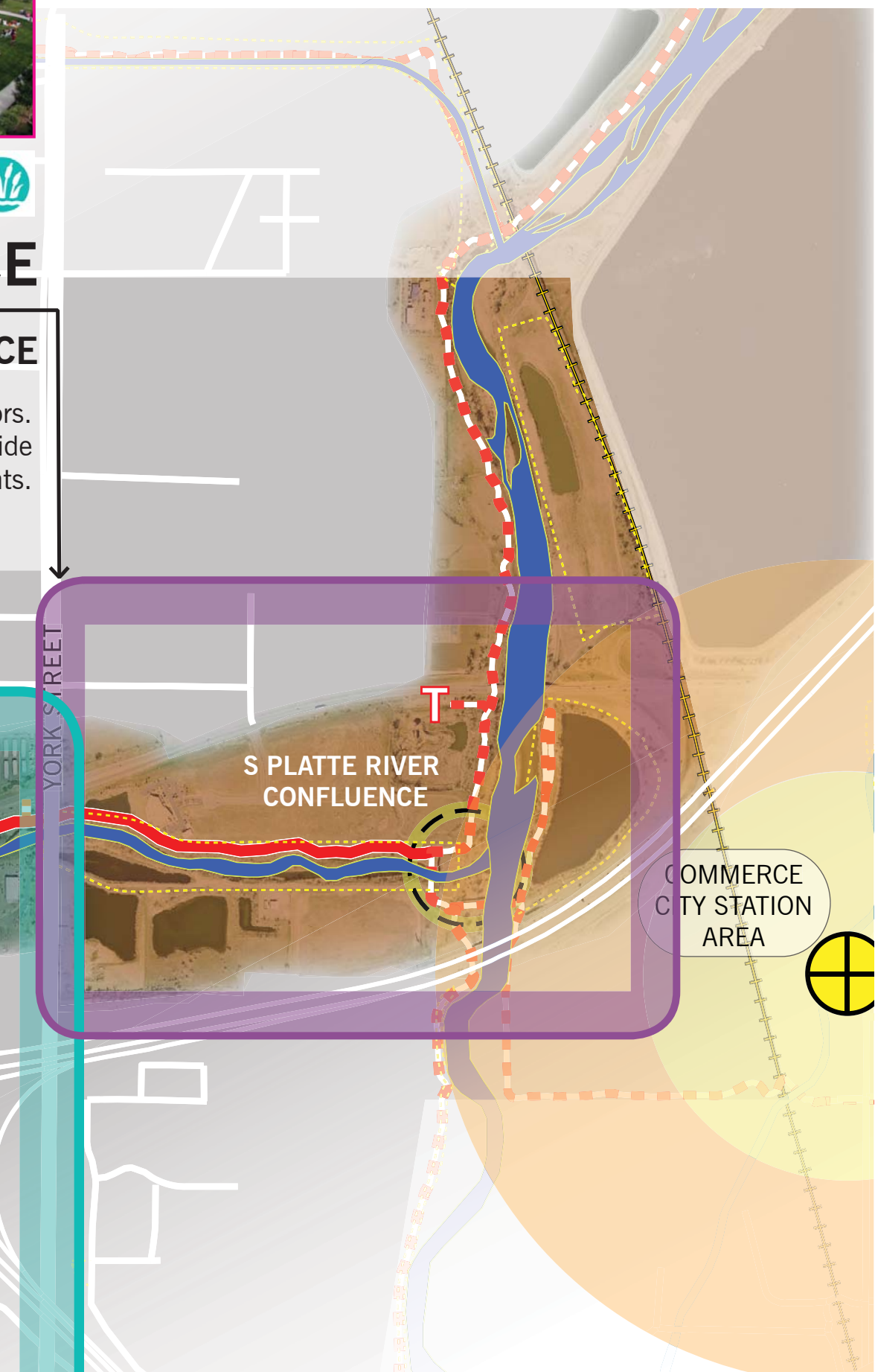
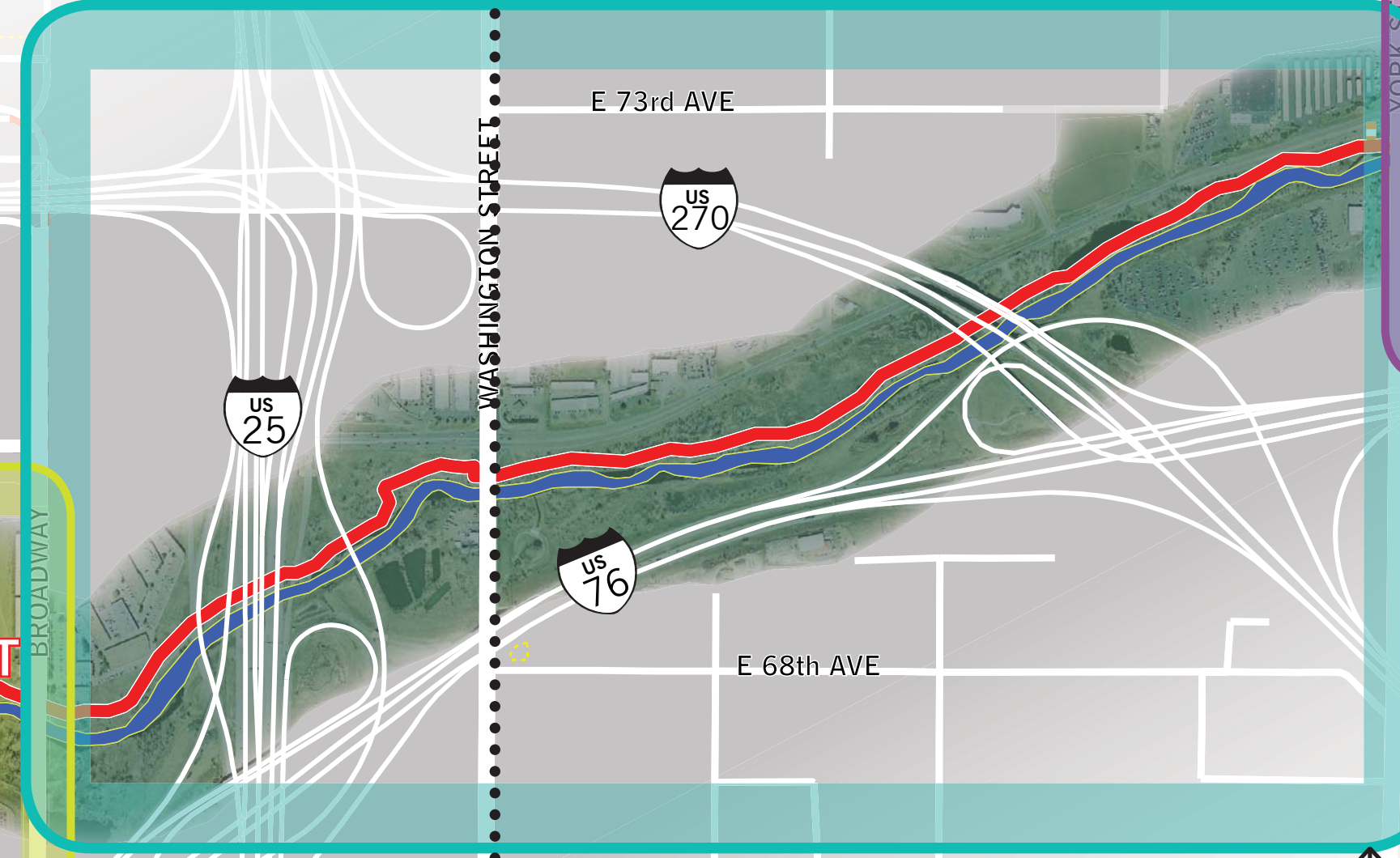


Soft paved trails and educational signage guide visitors through a protected area with a restored floodway, enhanced wildlife and wetland habitats. County coordination with CDOT can increase management opportunities.



RECREATION PLANNING

- WATER SPORTS
- FISHING AREAS
- SPORTS FIELDS
- PAVED CYCLING TRAILS
- MOUNTAIN BIKING
- CHILDREN'S PLAY AREAS
- FITNESS EQUIPMENT
- LOUNGING AREAS
- RESTAURANTS AND RETAIL
- PUBLIC ART
- SAFE RIVER CROSSING
- RAIN OR SHADE SHELTER
- OPEN MEADOW
- ANIMAL HABITAT PROTECTION
- NATURE LEARNING
- EXPANDED WETLAND HABITAT



The intersection of the Little Dry Creek Trail and Clear Creek connects Jefferson and Adams counties and a number of transit areas nearby. River topography provides an opportunity for future development to incorporate water recreation such as tubing, kayaking and stand-up paddle boarding.



SAFETY



RANGER PATROLS - a coordinated patrol system for the corridor to report maintenance problems and prevent unsafe uses

SIGNAGE

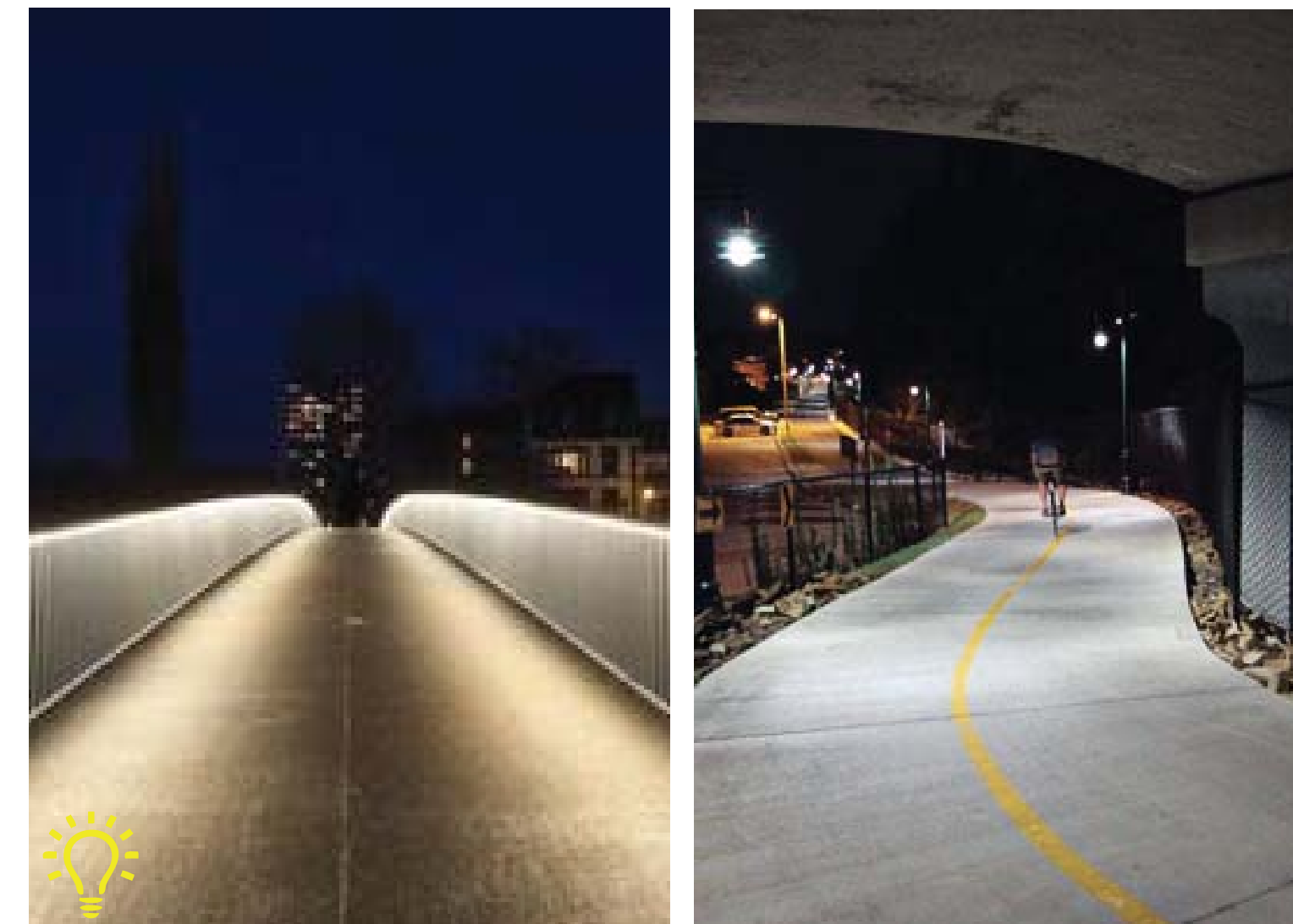


COORDINATE SIGNAGE - Combine signage efforts to mark location, define landmarks and add educational information

ACCESS



TRAILHEAD PARKING - Expand safe parking options with new lots and engage private owners to share parking areas when not in use.



LIGHTING GUIDELINES - repair and maintain existing lighting, add safety lighting at all transit stations, river crossings and underpasses



REGIONAL CONNECTIONS - Improve access to regional trails and transit areas for commuters and recreational users.



RESTROOMS - Include additional restroom facilities along trail, along with easy maintenance access for cleaning and replacement



SAFE PLACES TO CROSS - High-Intensity Activated Walk ("HAWK") traffic signals stop traffic when pedestrians need to cross

HOW COULD THESE PROGRAMS BE IMPLEMENTED?

Integrated Trail Programs



Integrated Signage Programs

Urban Drainage and Flood Control District
 Adams County Transportation
 Clear Creek Watershed Foundation
 Adams County Parks and Recreation
 Hyland Hills Parks & Recreation District

Potential Partnership Opportunities

Adams County Schools
 Neighborhood Organizations
 Clear Creek Watershed Association
 Department of Fish and Wildlife
 National Audubon Society
 Colorado Department of Transportation (CDOT)
 Local and Regional Recreation Programs
 Local Interest Groups

BASIC NEEDS

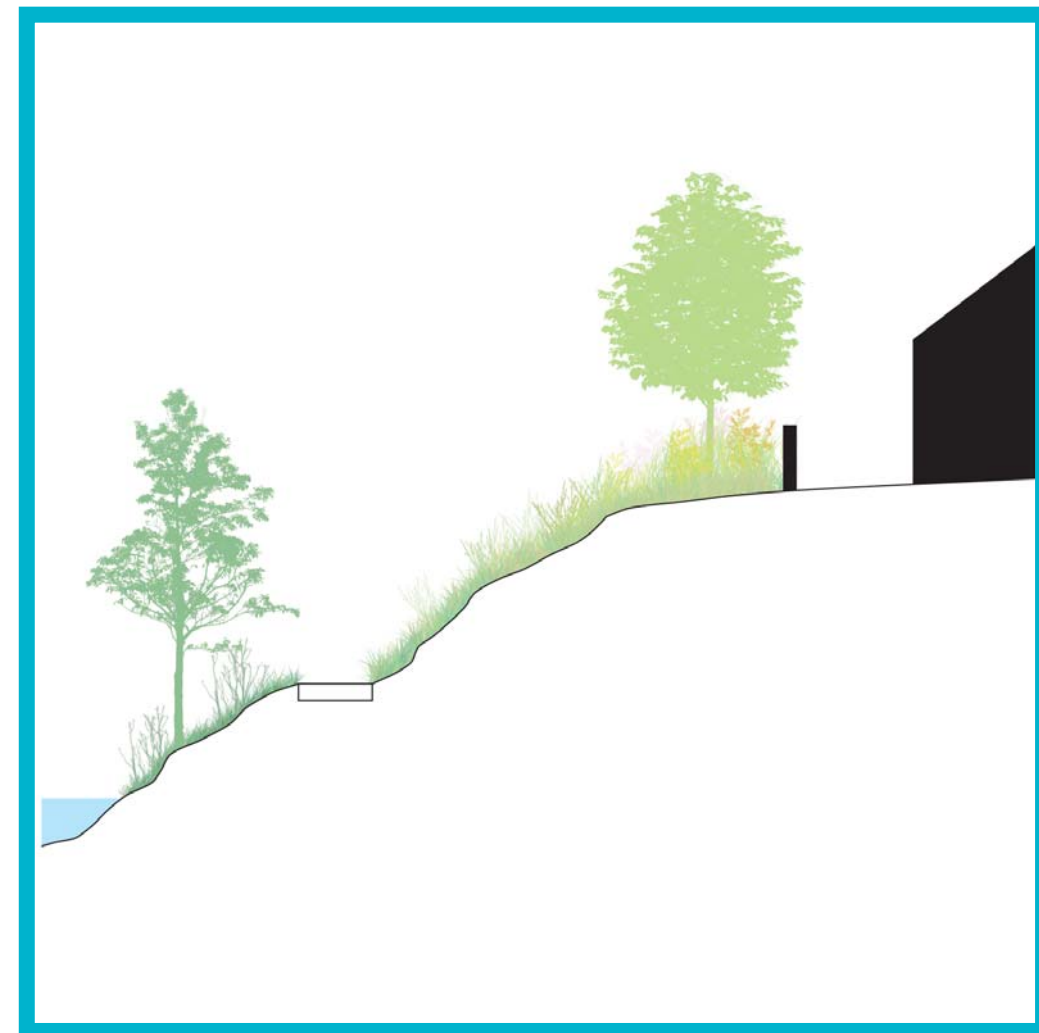
SOFTENING CORRIDOR EDGES

Vegetated Screening at Fenced Boundaries

APPLICATIONS: existing parking lots, industrial, single-family residential

Terraced Slopes

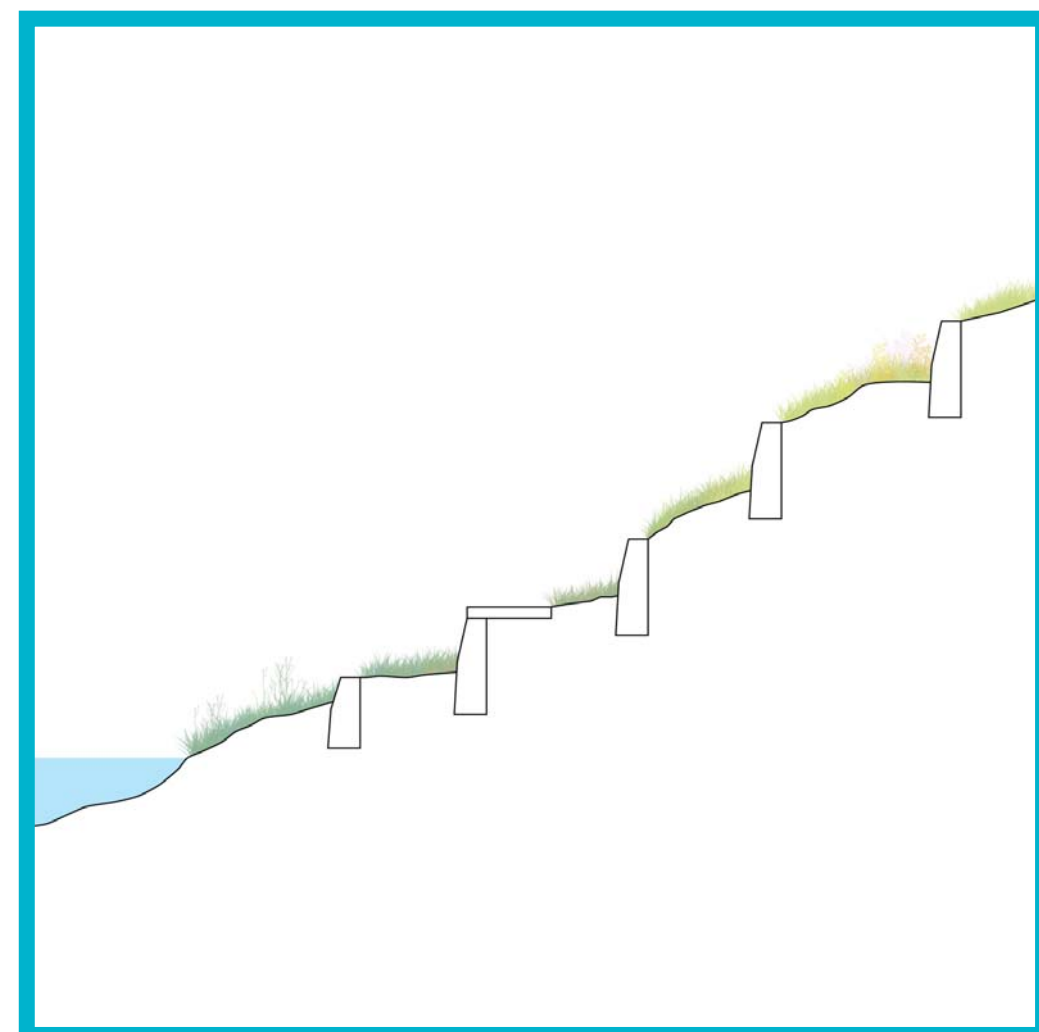
APPLICATIONS: areas in which <math><4:1</math> slope is not possible



VEGETATED SCREENING AT FENCED BOUNDARIES



VEGETATED SCREENING AT FENCED BOUNDARIES



TERRACED SLOPES



TERRACED SLOPES

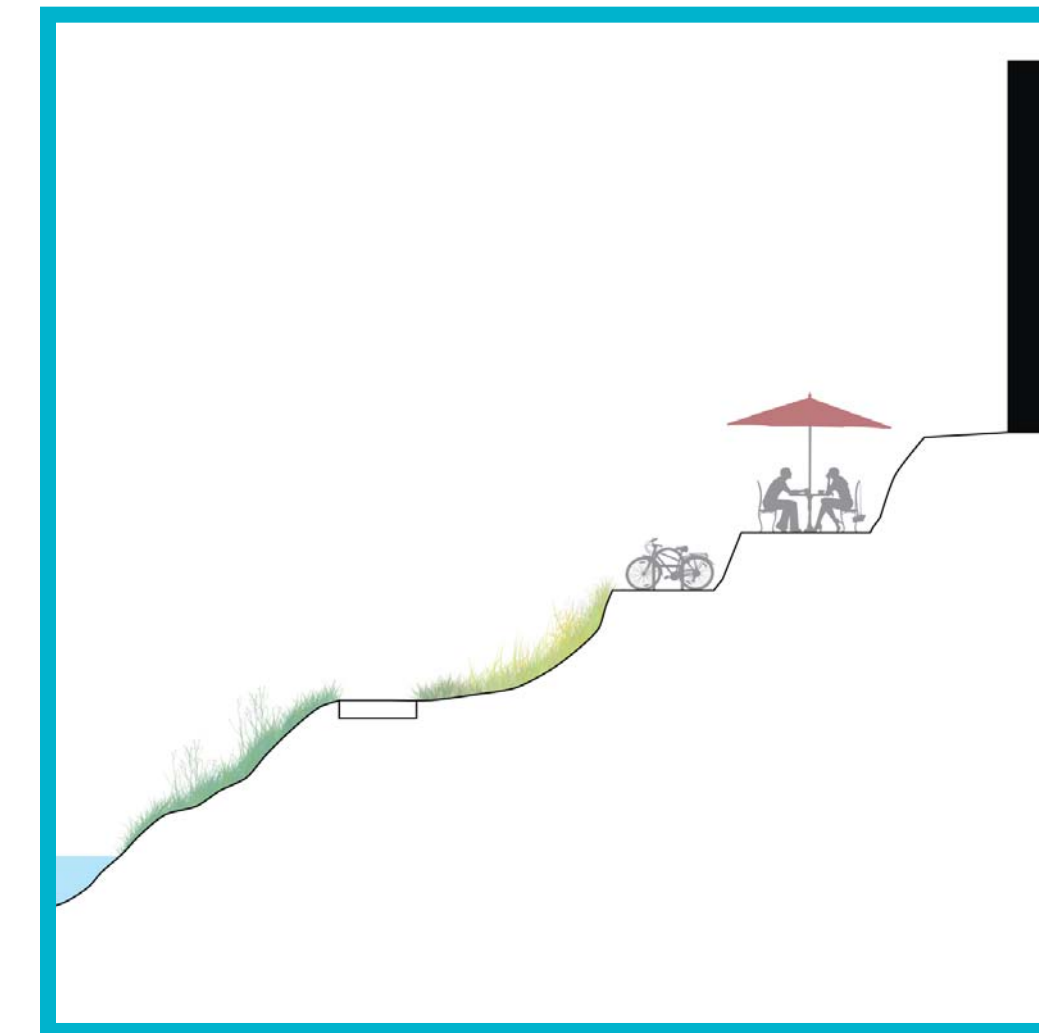
ENHANCING EXPERIENCE

Enhanced Creekside Visibility

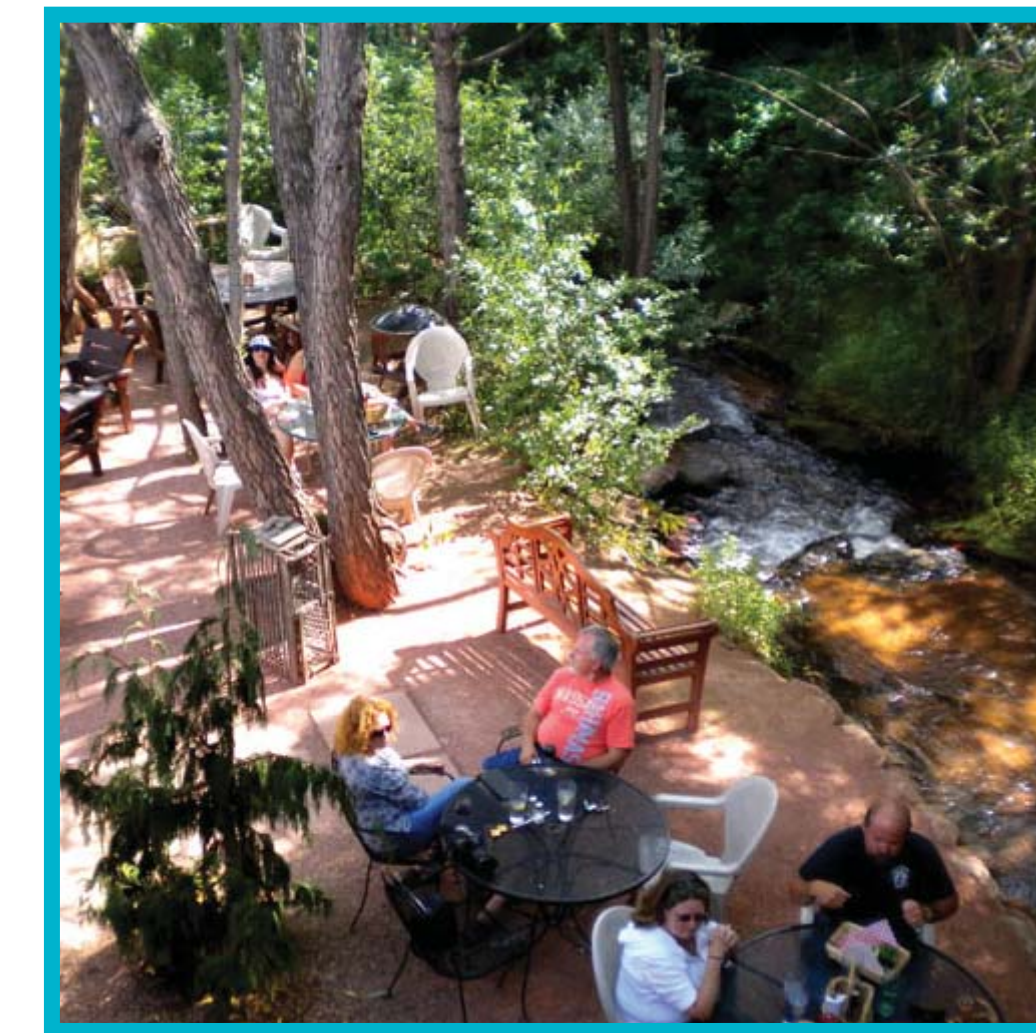
APPLICATIONS: commercial, retail

Integrated Open Space Areas with Low Vegetation Buffer

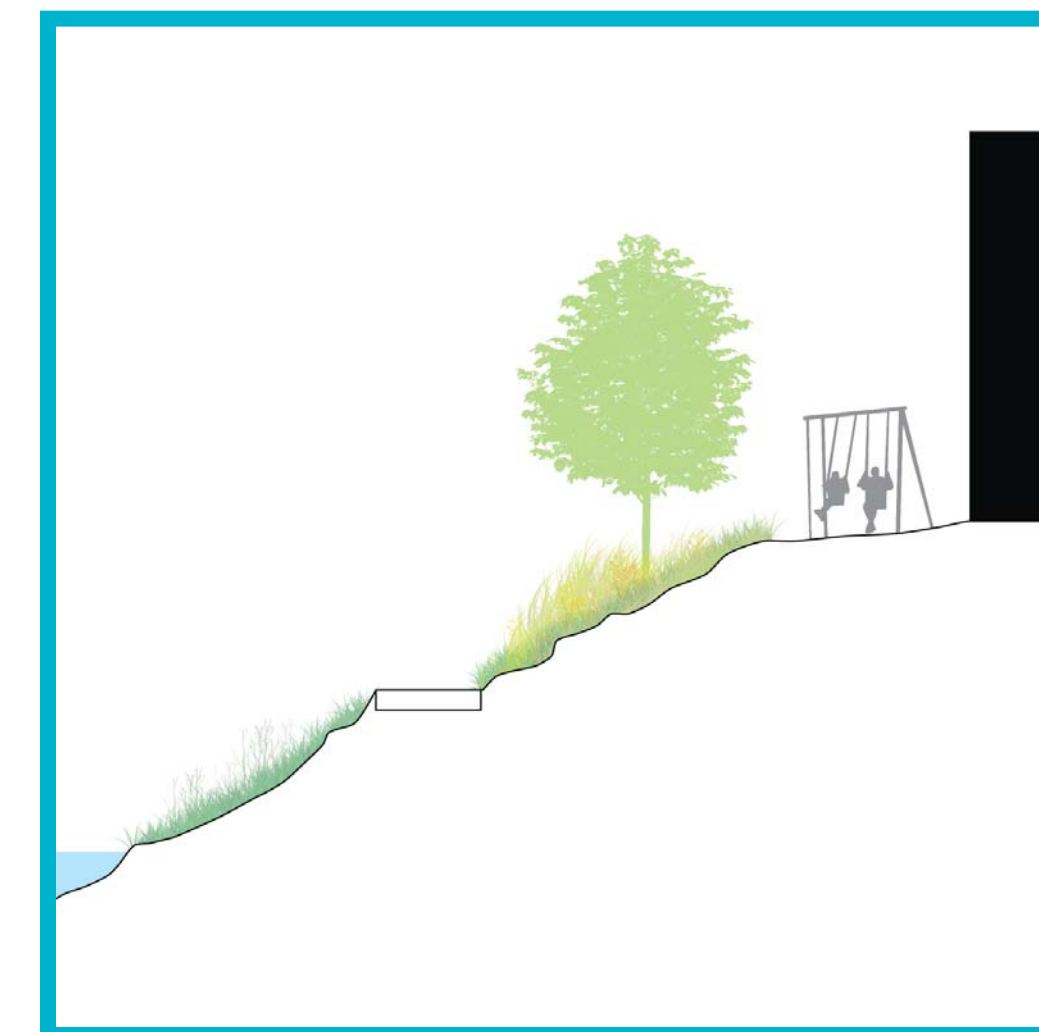
APPLICATIONS: multi-family residential, schools, community centers, other public buildings



ENHANCED CREEKSIDE VISIBILITY
APPLICATIONS: commercial, retail



ENHANCED CREEKSIDE VISIBILITY



INTEGRATED OPEN SPACE AREAS WITH LOW VEGETATION BUFFER
APPLICATIONS: multi-family residential, schools, community centers, other public buildings



INTEGRATED OPEN SPACE AREAS WITH LOW VEGETATION BUFFER

DEVELOPMENT GUIDELINES

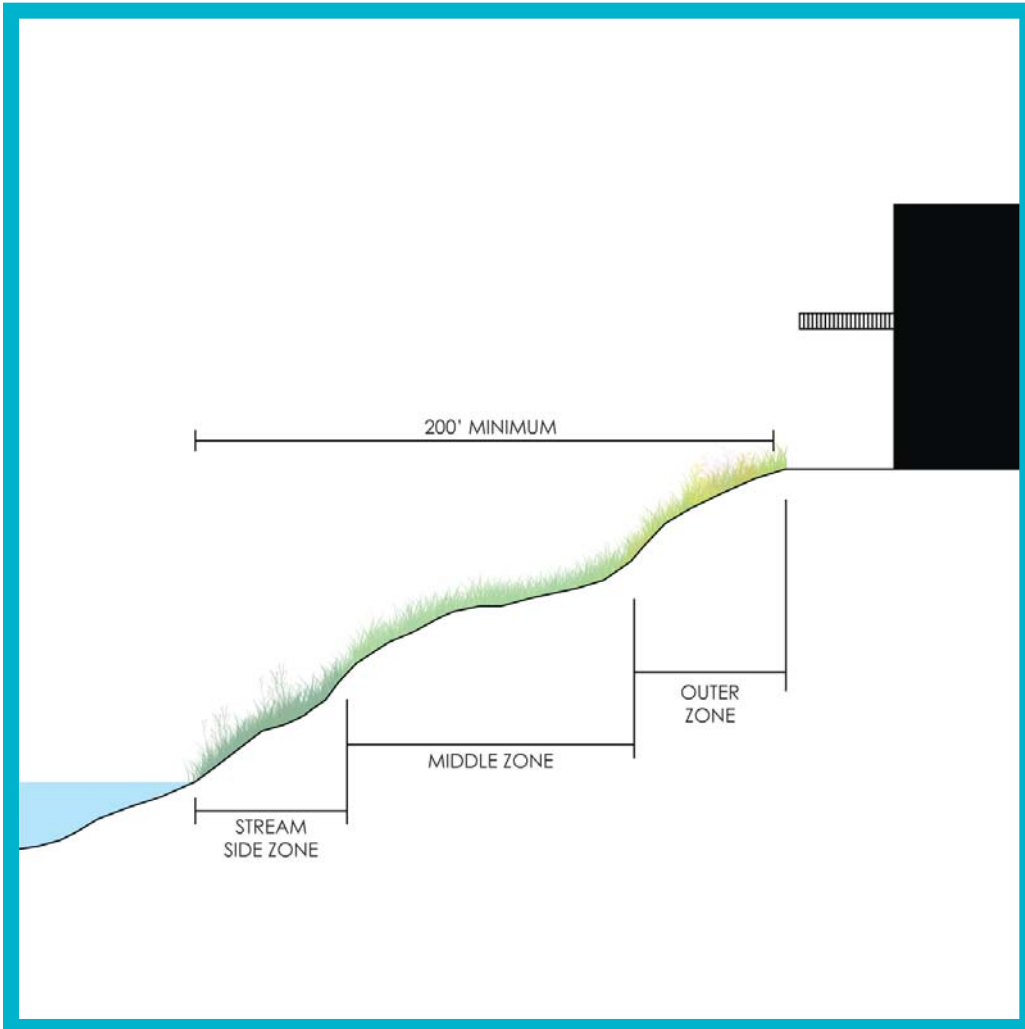
REVITALIZING ECOLOGIES

200' Minimum 3-Zone Buffer

APPLICATIONS: mid and high-impact development, stormwater outfall clusters, ecological areas and nature preserve areas.

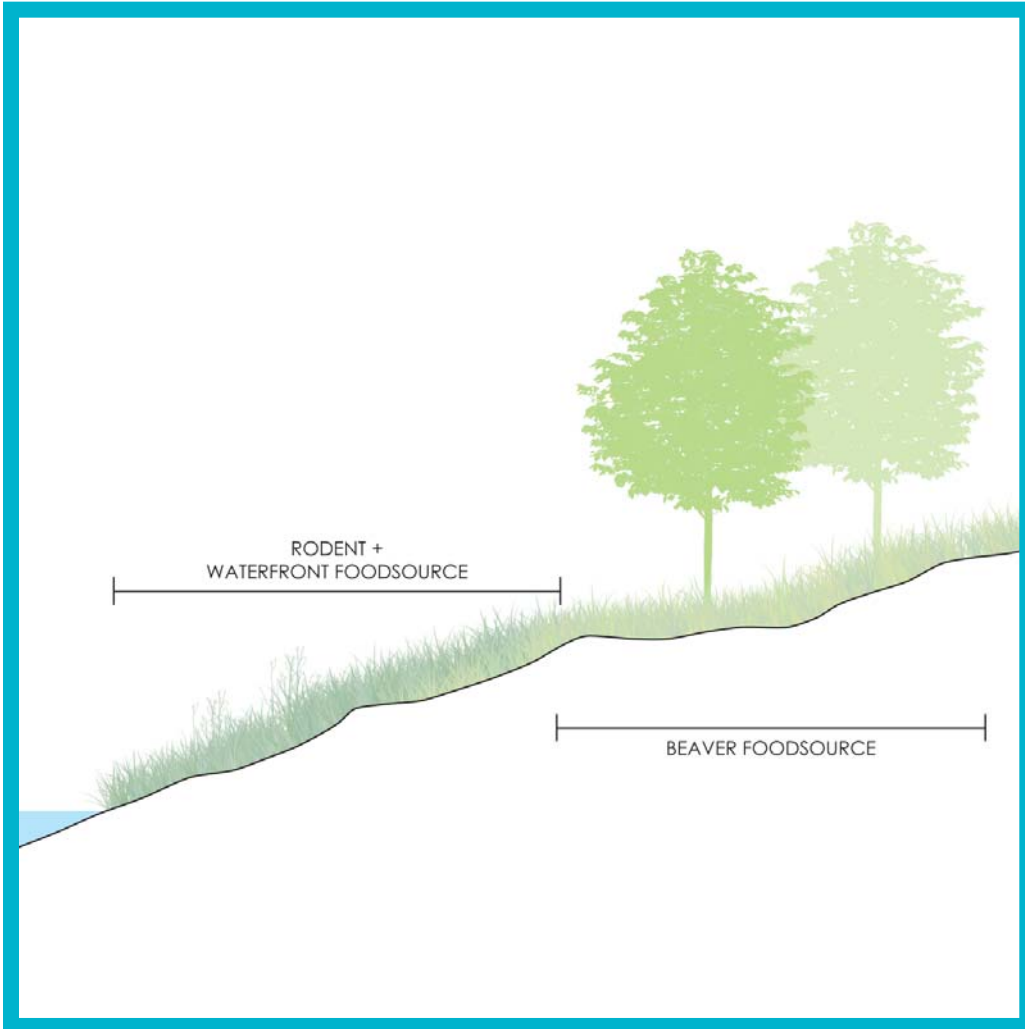
Animal Foodsource Plantings

APPLICATIONS: ecological areas and nature preserve, other areas as possible.



200'- MINIMUM 3-ZONE BUFFER

200'- MINIMUM 3-ZONE BUFFER



ANIMAL FOODSOURCE PLANTINGS

ANIMAL FOODSOURCE PLANTINGS

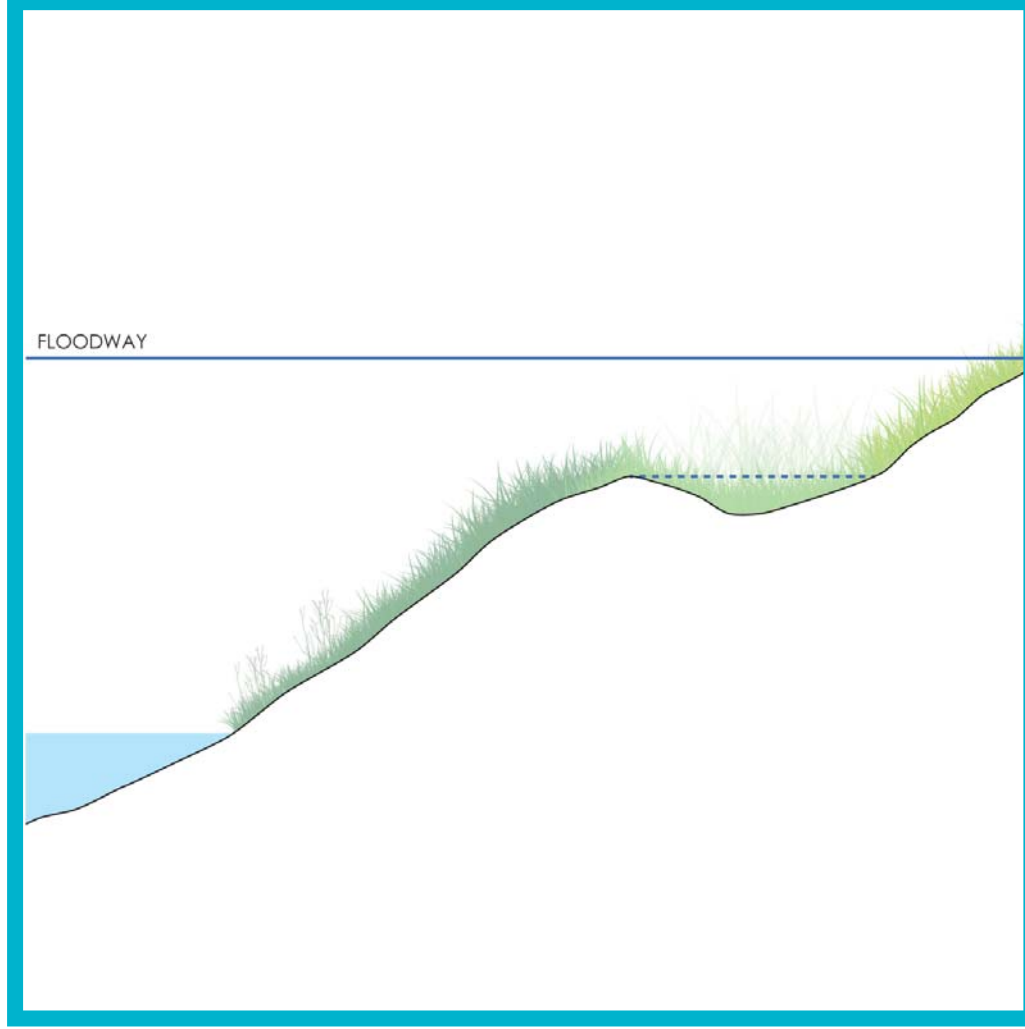
EXPANDING HABITATS

Ephemeral Ponding Areas

APPLICATIONS: ecological areas and nature preserve, other areas as possible.

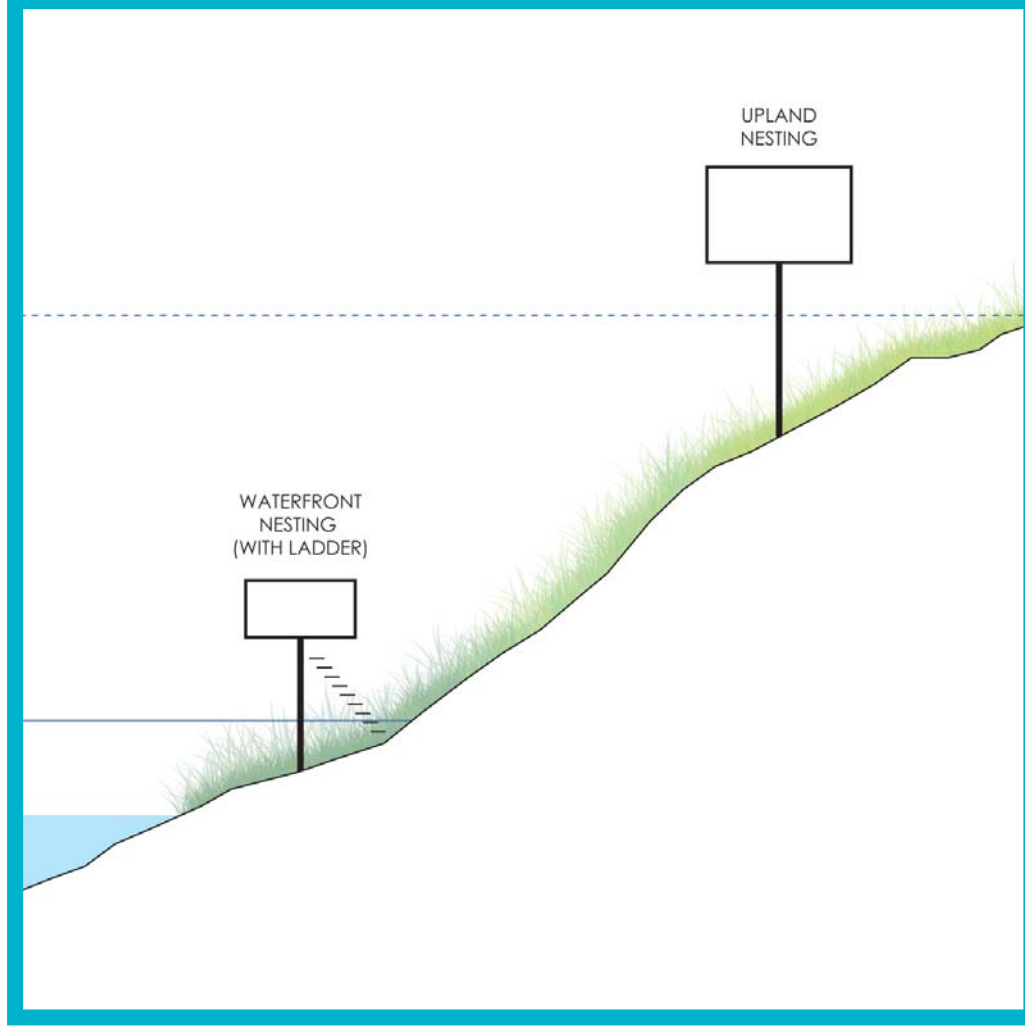
Safe Nesting Areas

APPLICATIONS: ecological areas and nature preserve, other areas as possible.



EPHEMERAL PONDING AREAS
APPLICATIONS: ecological areas and nature preserve, other areas as possible.

EPHEMERAL PONDING AREAS



SAFE NESTING AREAS
APPLICATIONS: ecological areas and nature preserve, other areas as possible.

SAFE NESTING AREAS

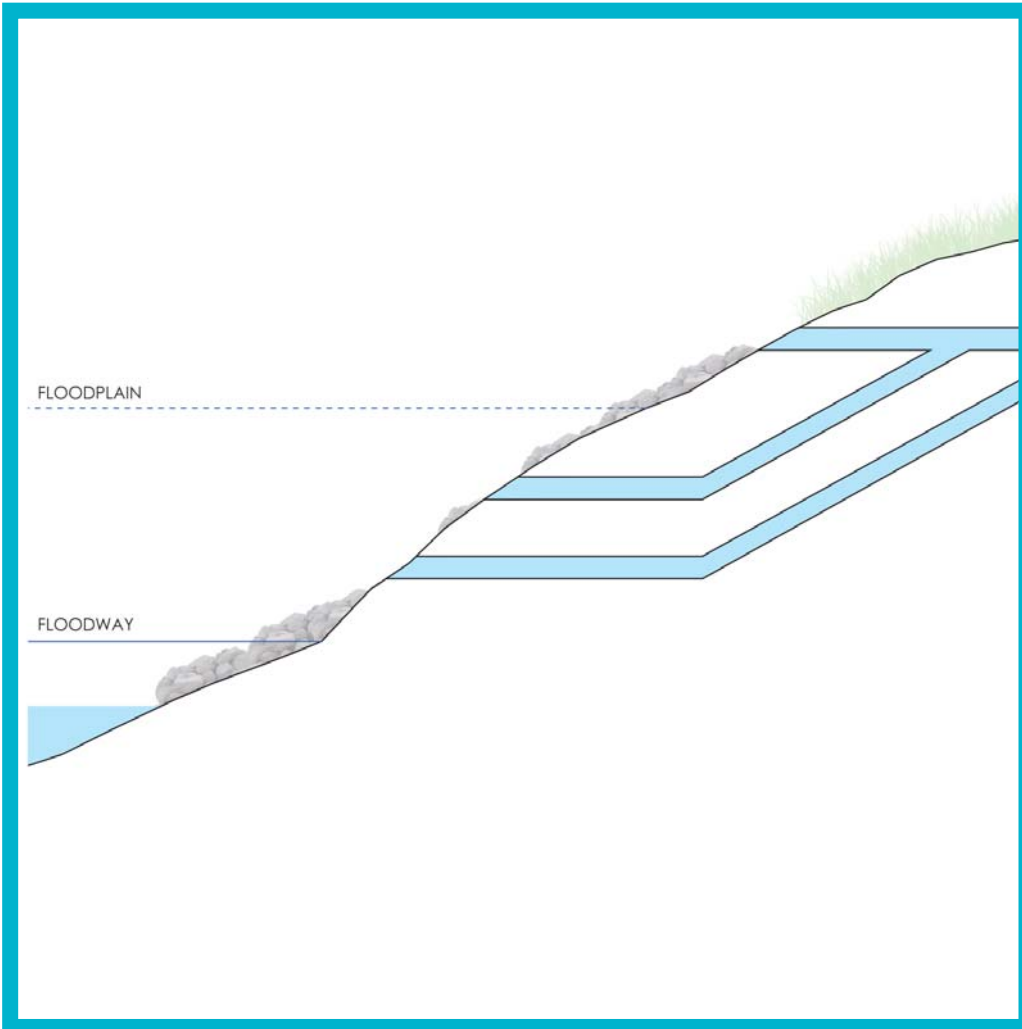
INTEGRATING GREEN INFRASTRUCTURE

Outfall Setback

APPLICATIONS: minimum requirement for future development

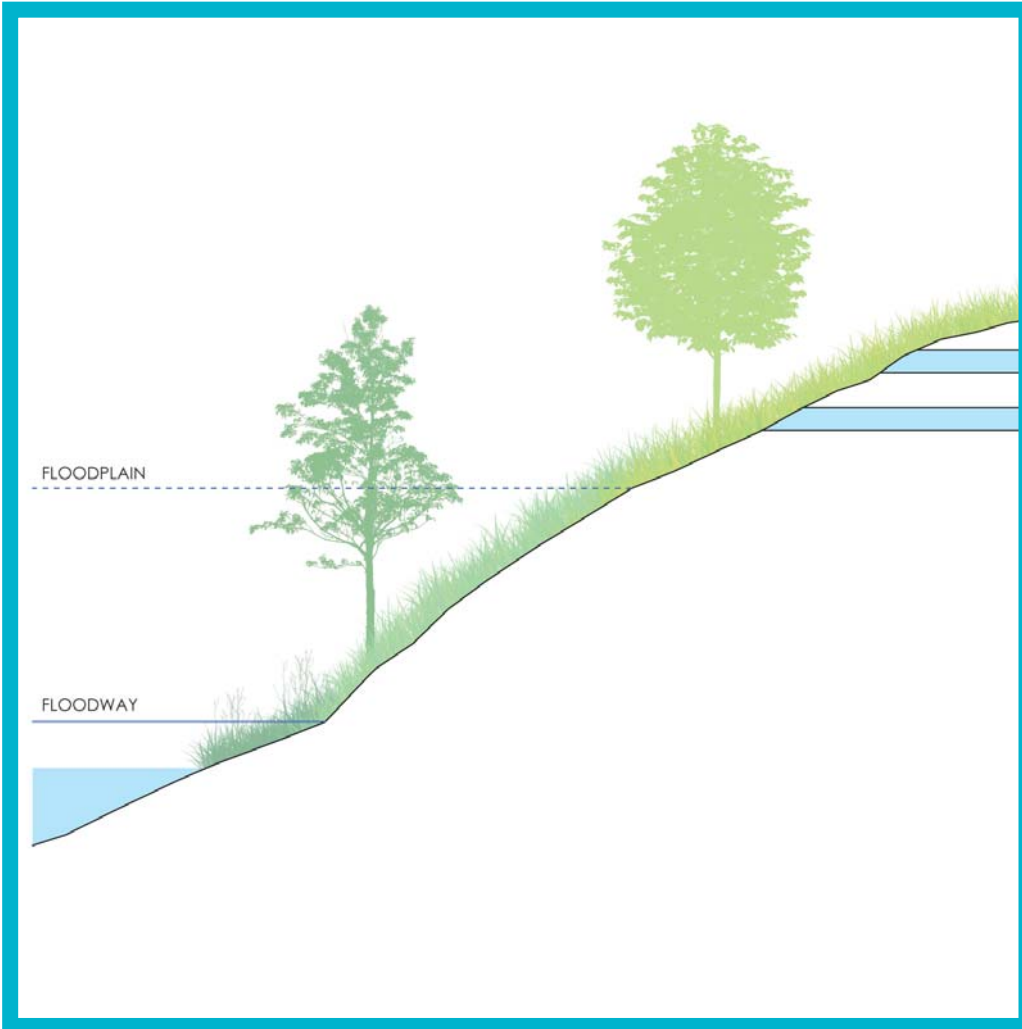
Integrated Stormwater Parks

APPLICATIONS: ecological areas and nature preserve, other areas as possible.



OUTFALL SETBACK
Above 5-year floodplain

OUTFALL SETBACK



INTEGRATED STORMWATER PARKS

INTEGRATED STORMWATER PARKS

DEVELOPMENT GUIDELINES