

WELCOME!

Adams County Regional Park and Fairgrounds Master Plan

Open House and Community Meeting #1

The Master Plan for the Park and Fairgrounds will seek to meet and balance the needs of the Regional Park and Fairgrounds clientele and visitors while looking to the future. A comprehensive master plan will ensure stewardship of natural resources, meet the recreational demands of a growing regional population, as well as study the continued marketability and financial viability of the improvements to the regional facility.

Tonight we are seeking your INPUT on what is working well, what needs to be improved, and what you would like to see in the future at this site.

Visit the county's website for more information and project updates!
<https://www.adcogov.org/parks-open-space>

Project Contact:
 Kurt Carlson
 KCarlson@adcogov.org

Why a Master Plan?

- Previous plans are in need of an update (1999 and 2009)
- Changes in community demographics and growth pressures mean changes to values, recreation needs, and offerings
- Aging facilities require future-looking planning
- Prioritization of opportunities and needs
- Guide long-term decisions regarding development, funding, policies, operations, etc.
- Consolidate previous planning efforts

The Planning Process:



The Planning Team:



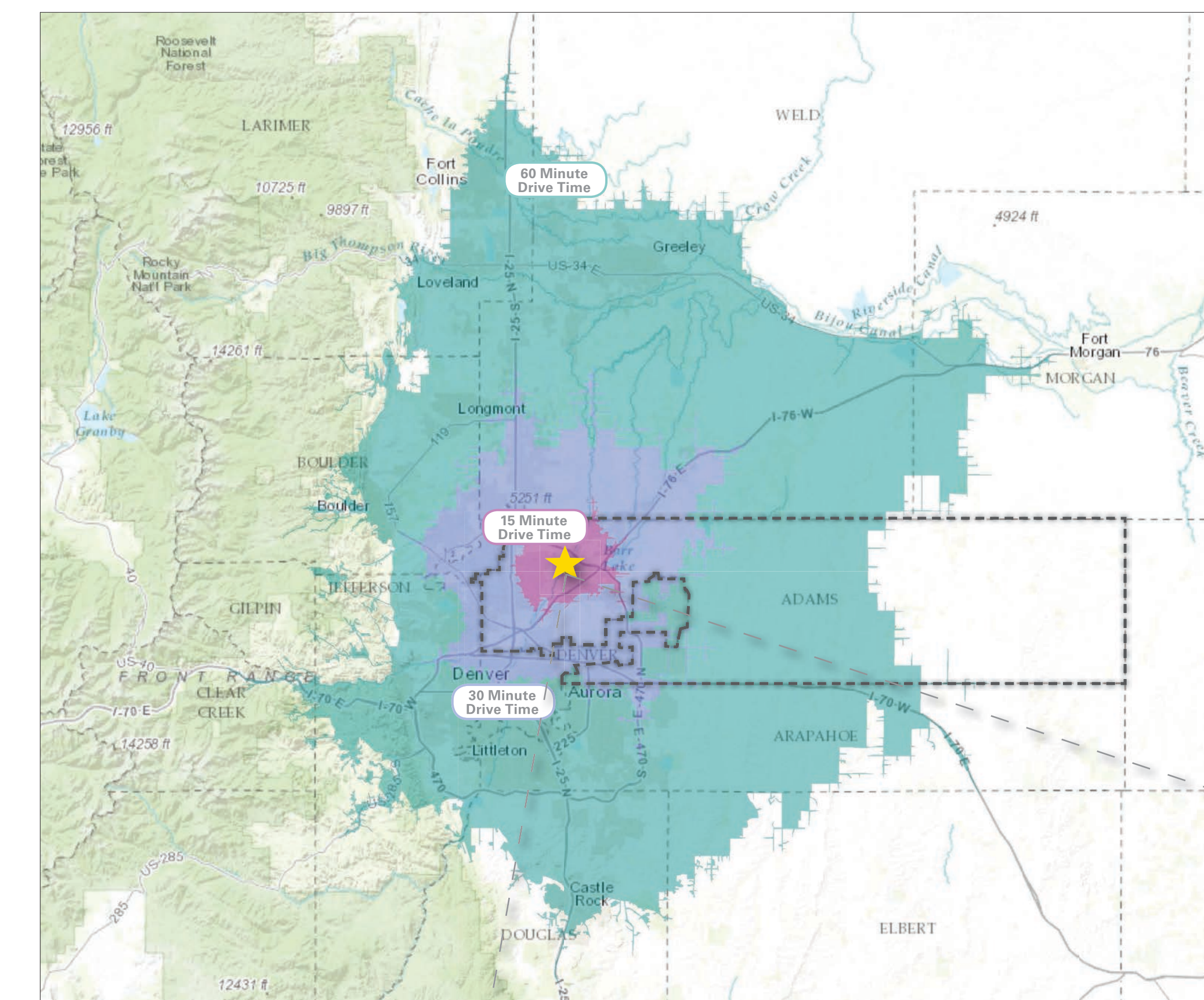
Landscape Architecture & Planning
 DESIGNWORKSHOP

Civil Engineering & Transportation Planning
 MARTIN/MARTIN CONSULTING ENGINEERS

Event Facility Architects
 SINKCOMBSETHLEFS ARCHITECTURE + DESIGN

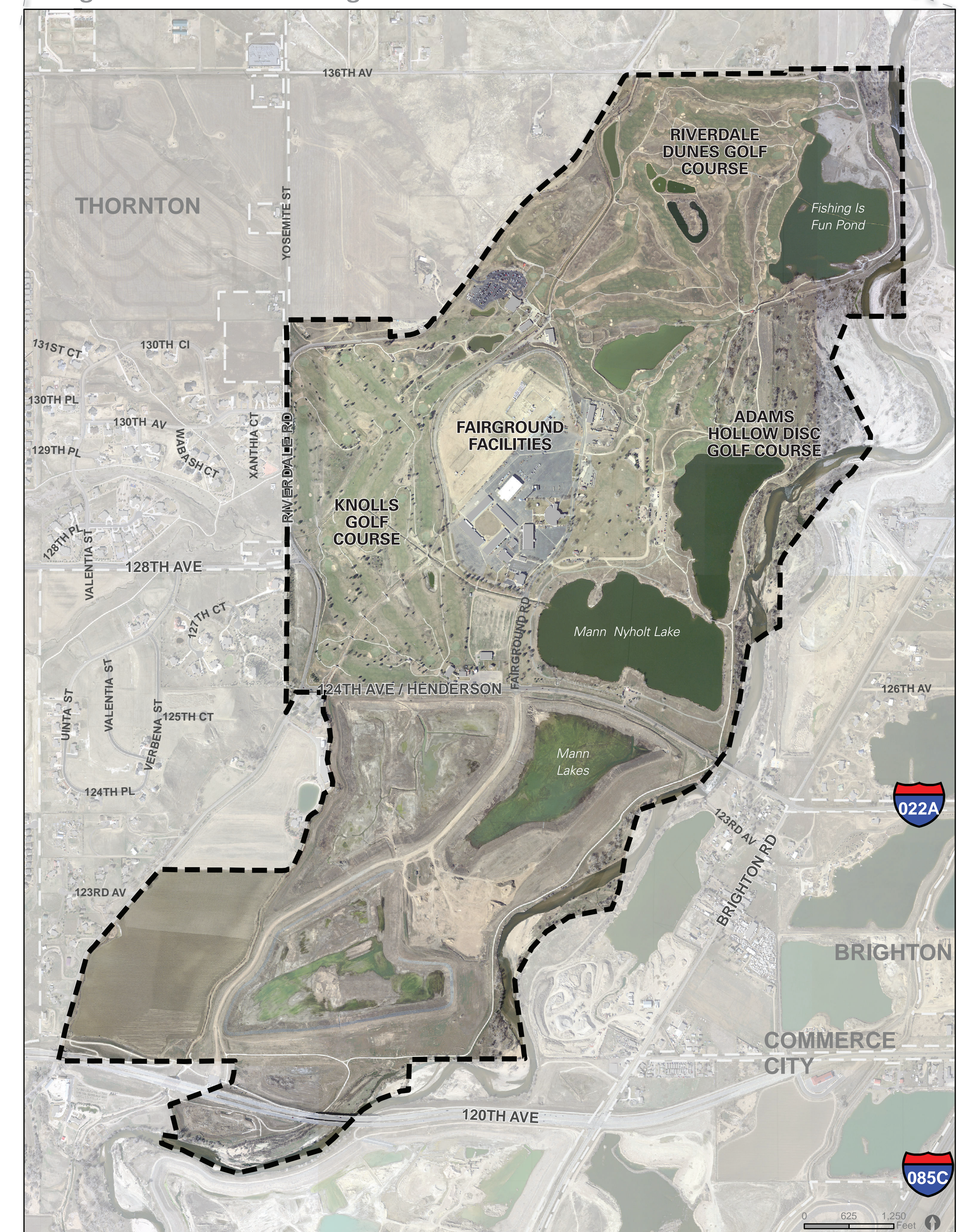
Fairground Architects & Market Researchers
 K/C Crossroads

Regional Context and Drive Times



★ Adams County Regional Park and Fairgrounds
 □ Adams County
 ■ 10 Minute Drive Time
 ■ 30 Minute Drive Time
 ■ 60 Minute Drive Time

Regional Park and Fairgrounds



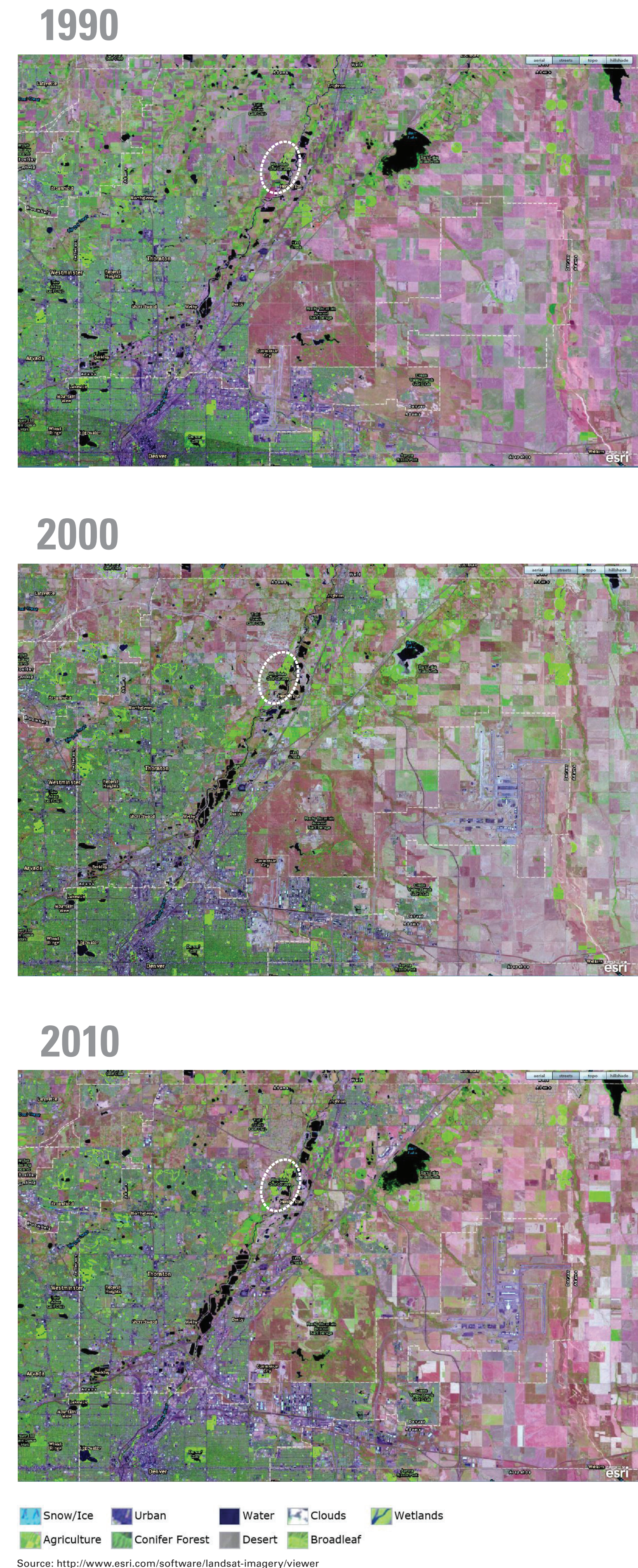
SURROUNDING CONTEXT AND DEMOGRAPHICS

ADAMS COUNTY QUICK FACTS:

5TH MOST POPULOUS COUNTY IN COLORADO

Population (2010) 441,603
 County seat Brighton
 Rainfall 16.9 in
 Snowfall 44.2 in
 Precipitation Days 75
 Sunny Days 245
 Elevation 5,084 ft

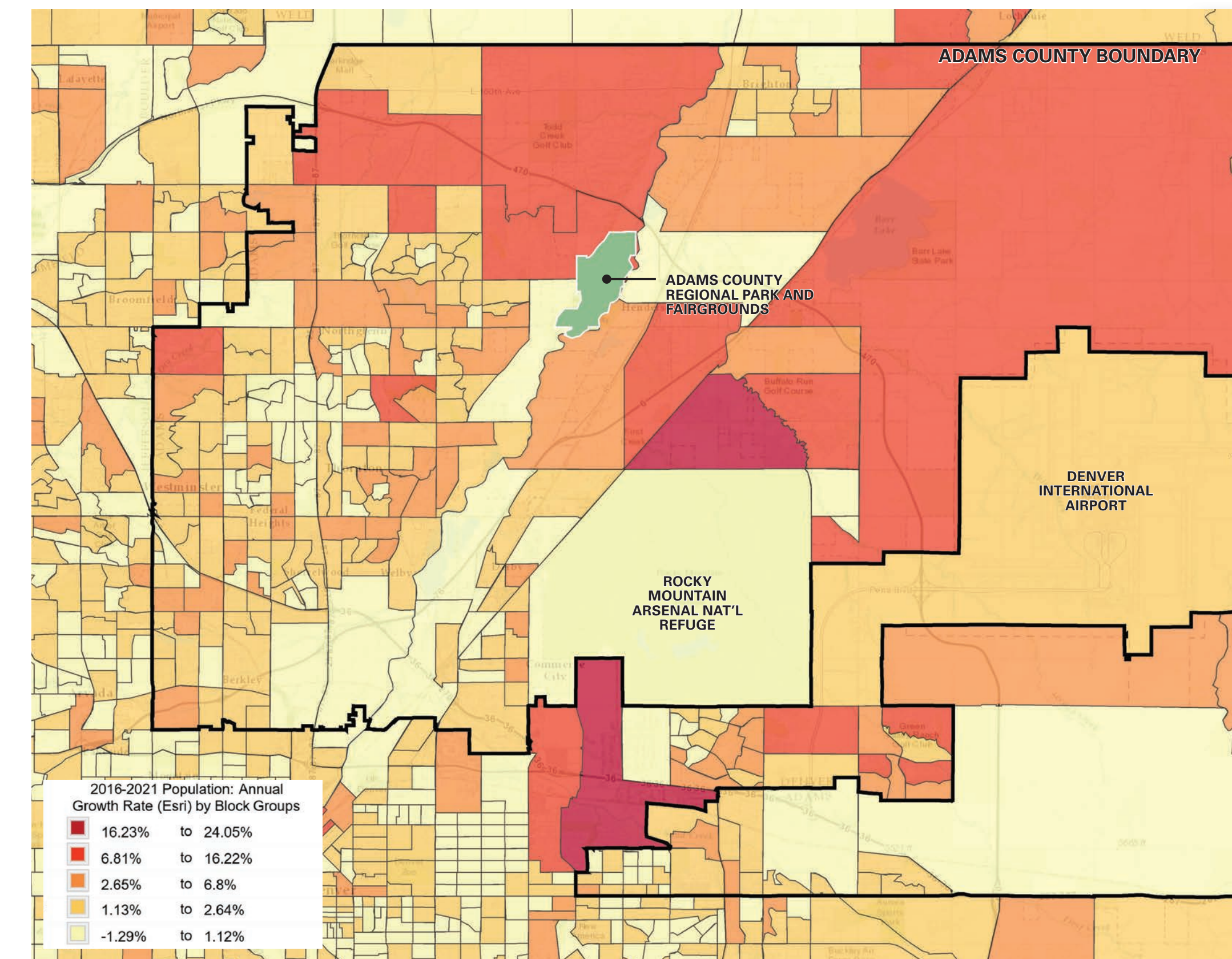
LAND USE/VEGETATION CHANGE OVER TIME



Landcover has changed in notable ways over time across the region in the following ways:

- The Denver airport expanded its footprint after 1990
- Gravel activity has resulted in reclaimed lakes along the South Platte River
- Visible development pressures continue to expand along roadway corridors.

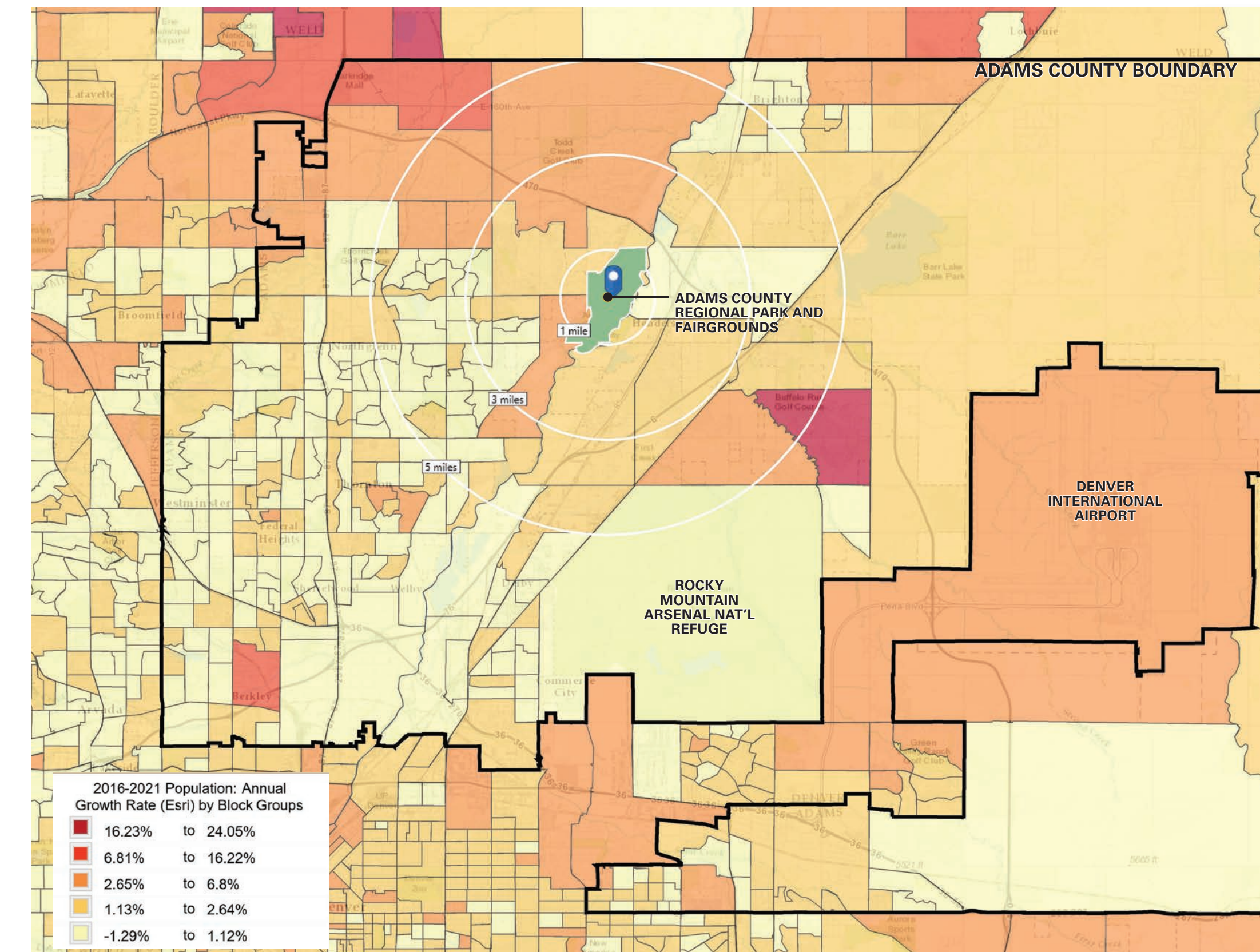
2016 POPULATION



483,041 total Adams County 2016 population

892,888 number of people who live within a 30 minute drive from the Regional Park and Fairgrounds

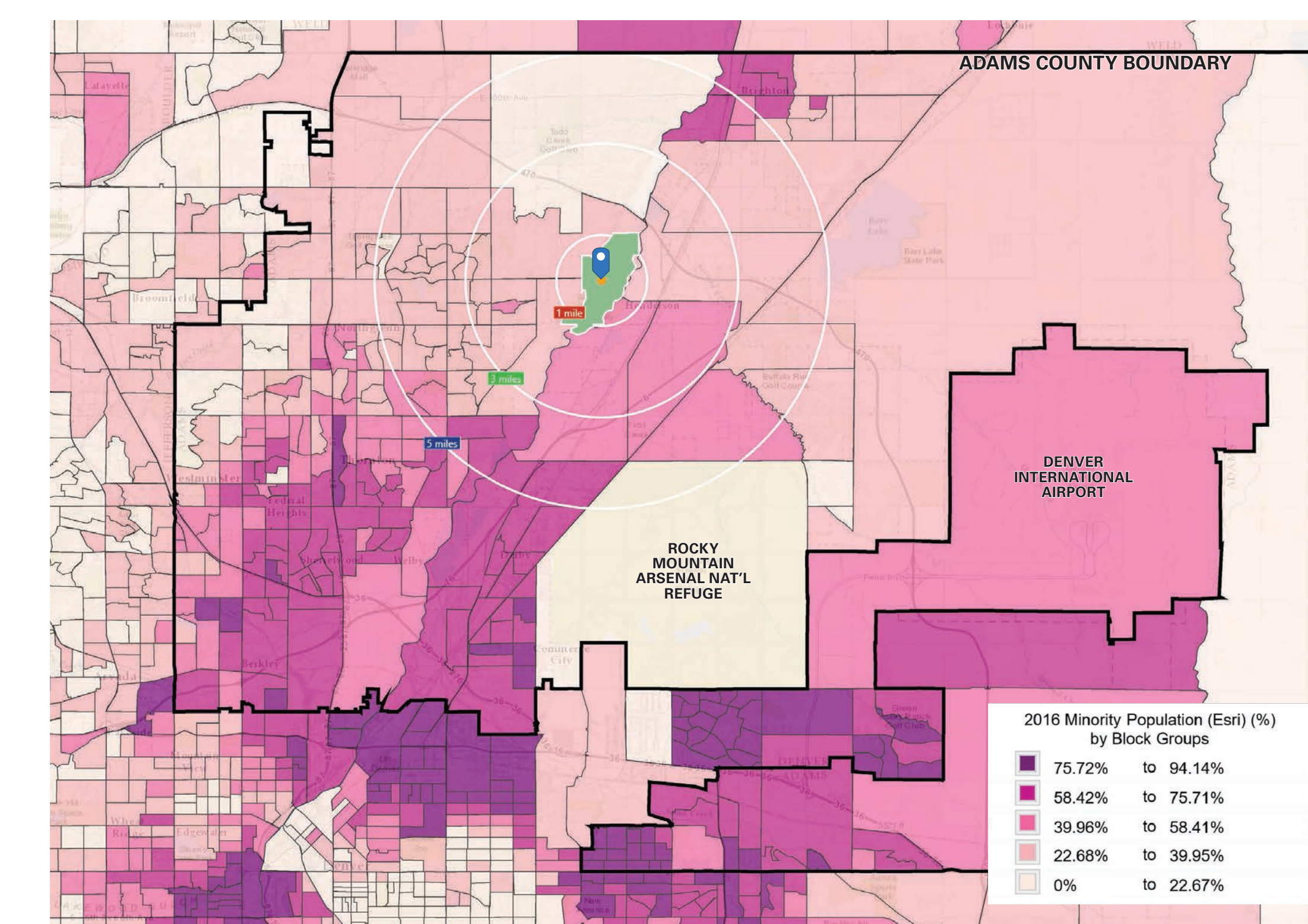
2016-2021 POPULATION GROWTH



2.41% annual growth rate 2000-2010

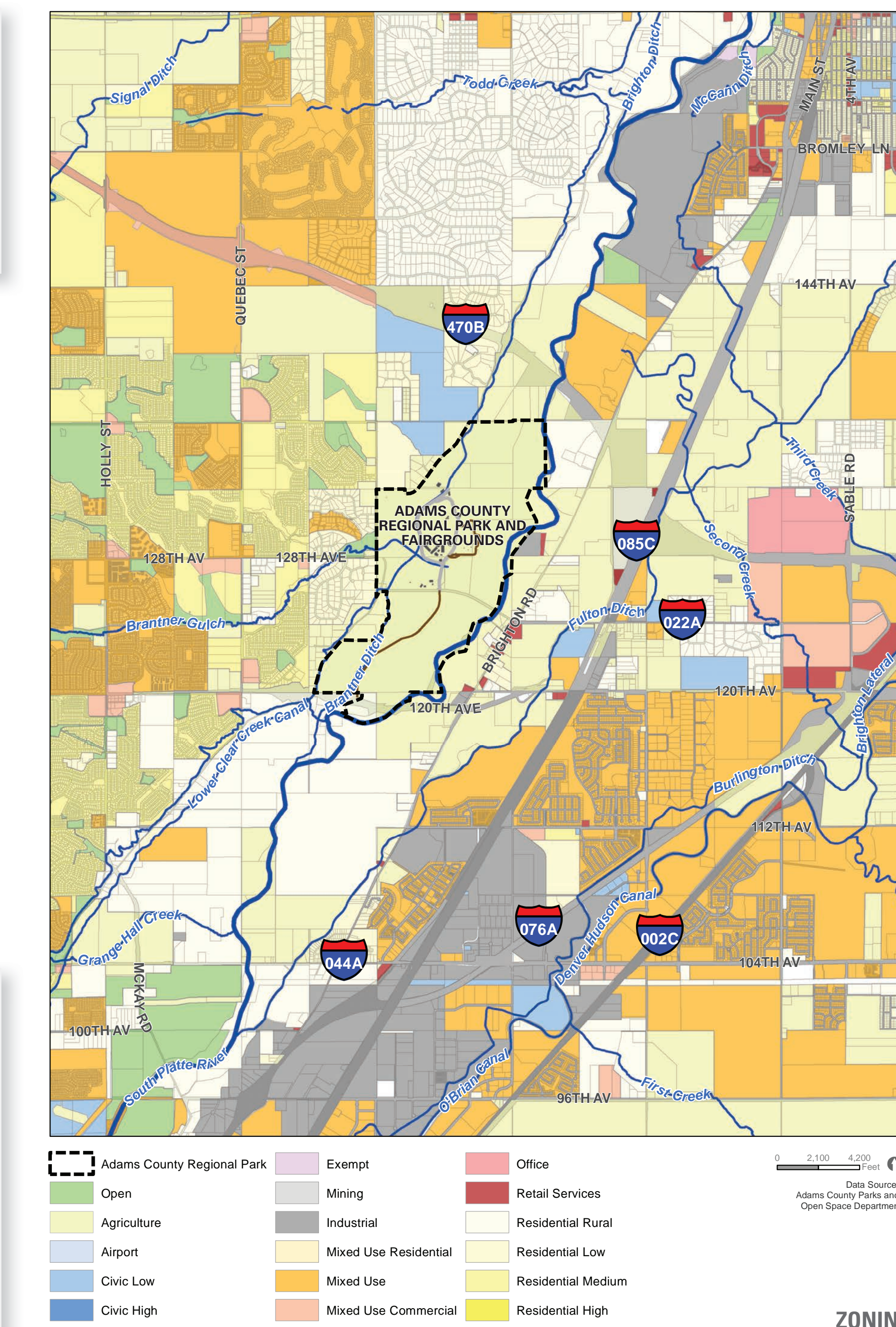
1.77% projected annual growth rate from 2016 - 2021

2016 MINORITY POPULATION

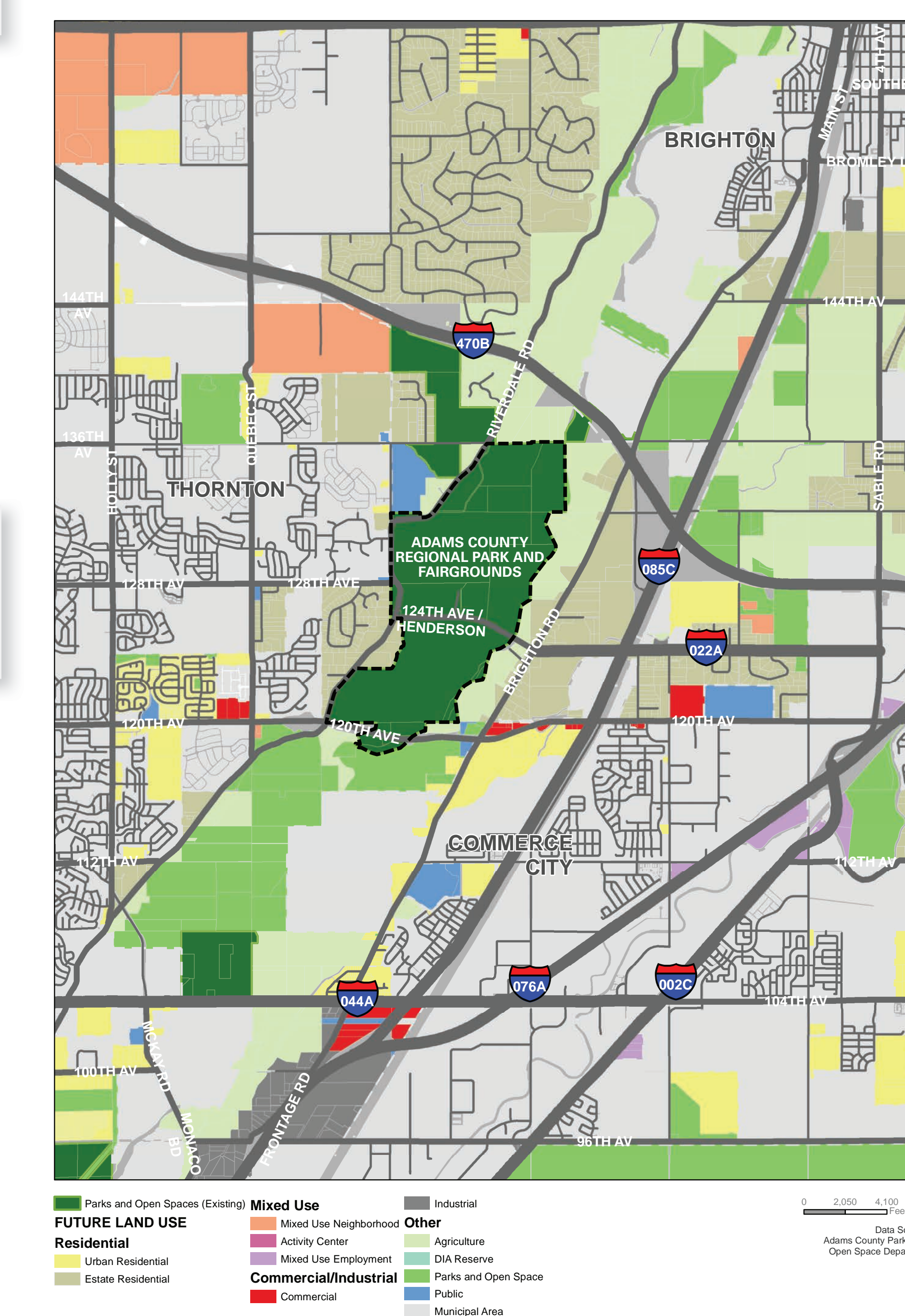


39.5% Hispanic Population

ZONING



FUTURE LAND USE

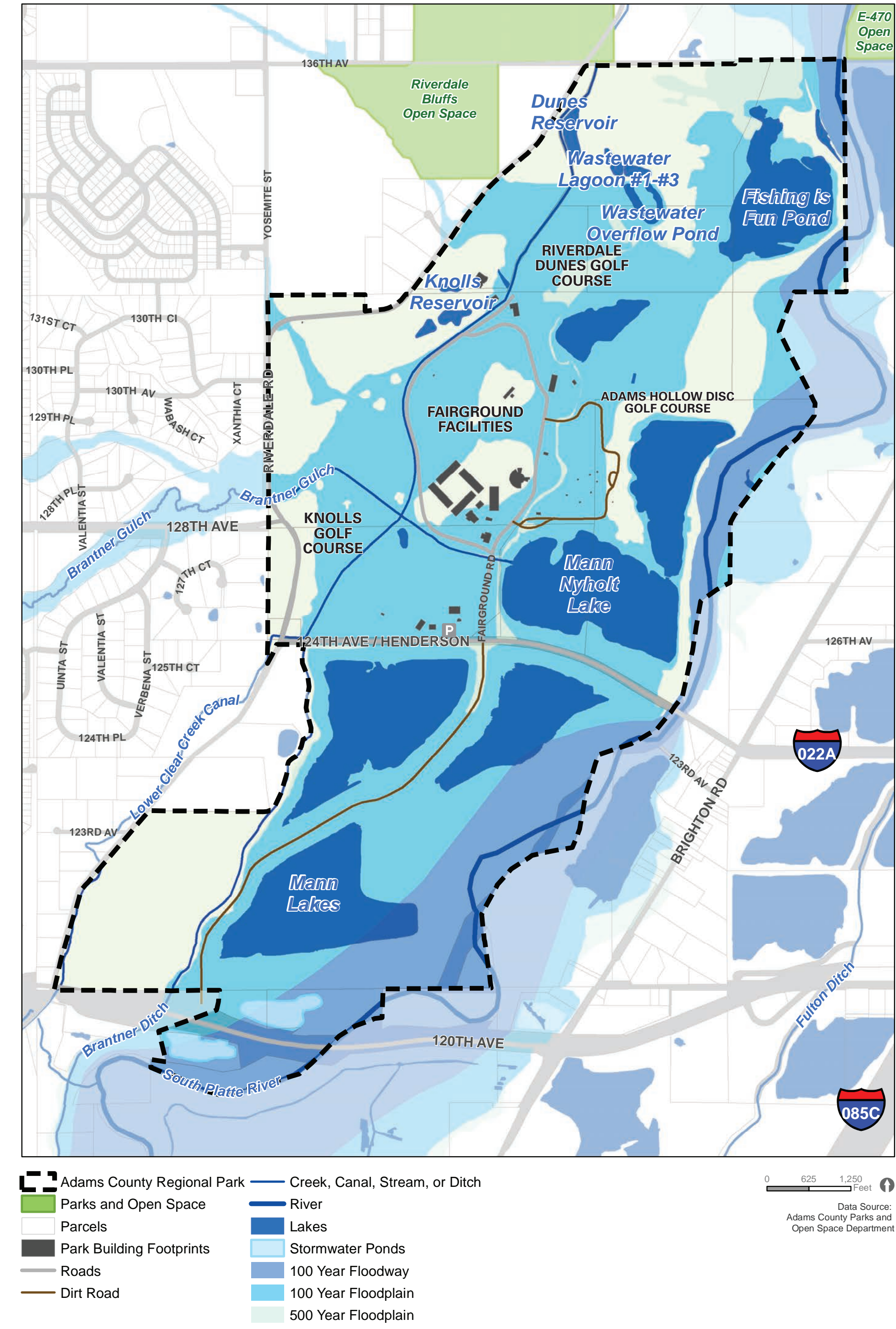


ADAMS COUNTY REGIONAL PARK AND FAIRGROUNDS

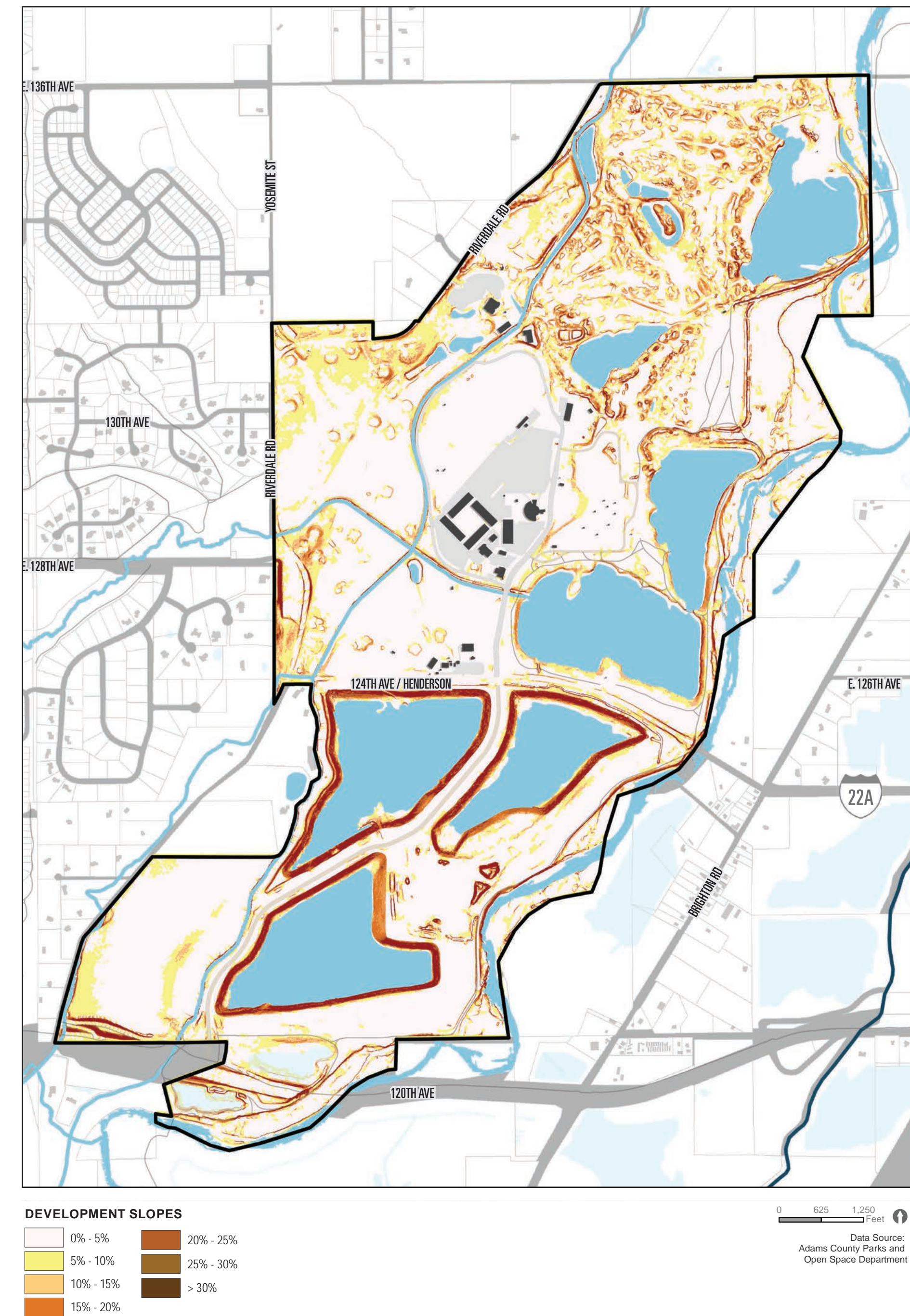
ADAMS COUNTY, CO
 February 2017

ENVIRONMENTAL CONTEXT

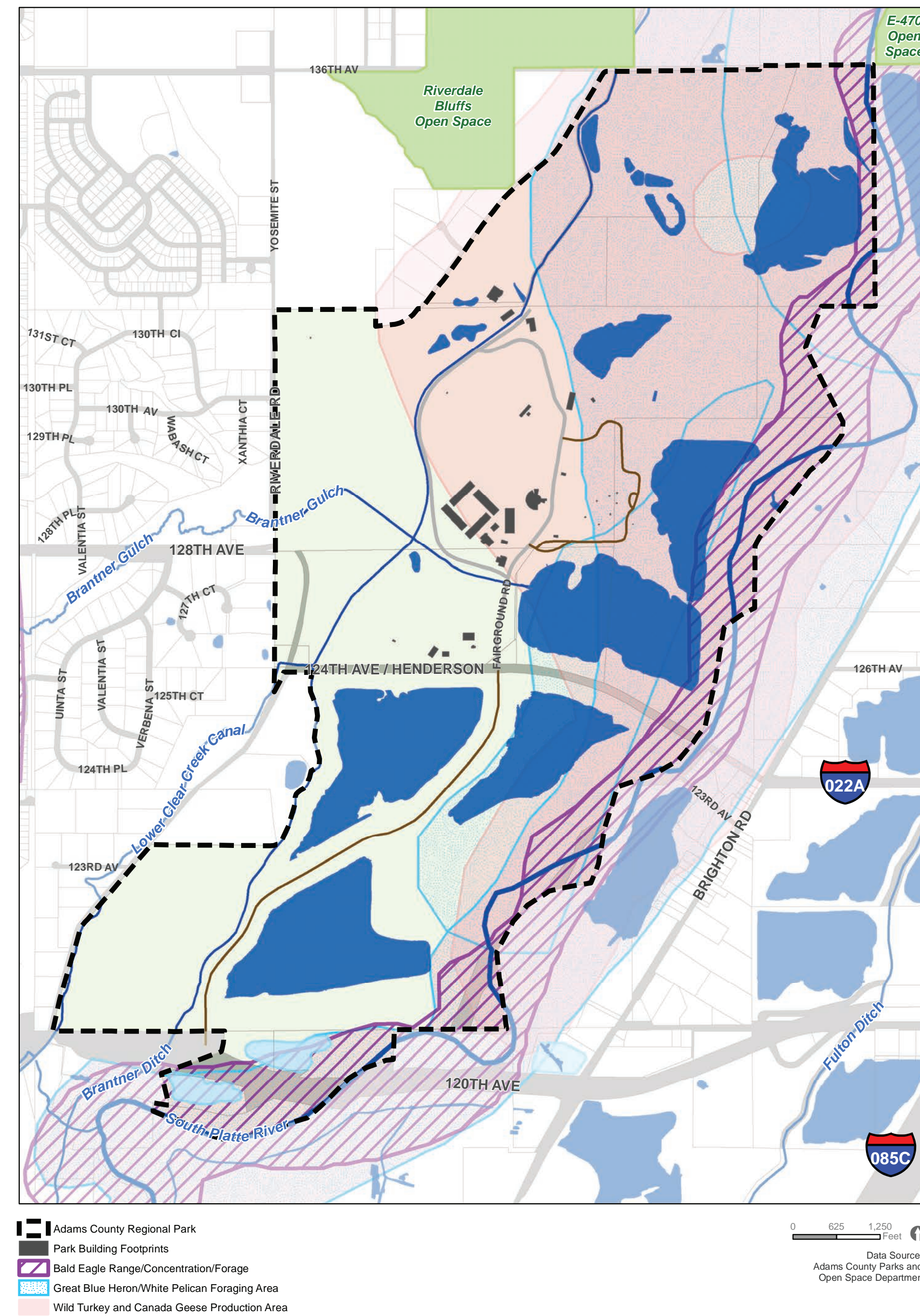
HYDROLOGY



DEVELOPMENT SLOPES

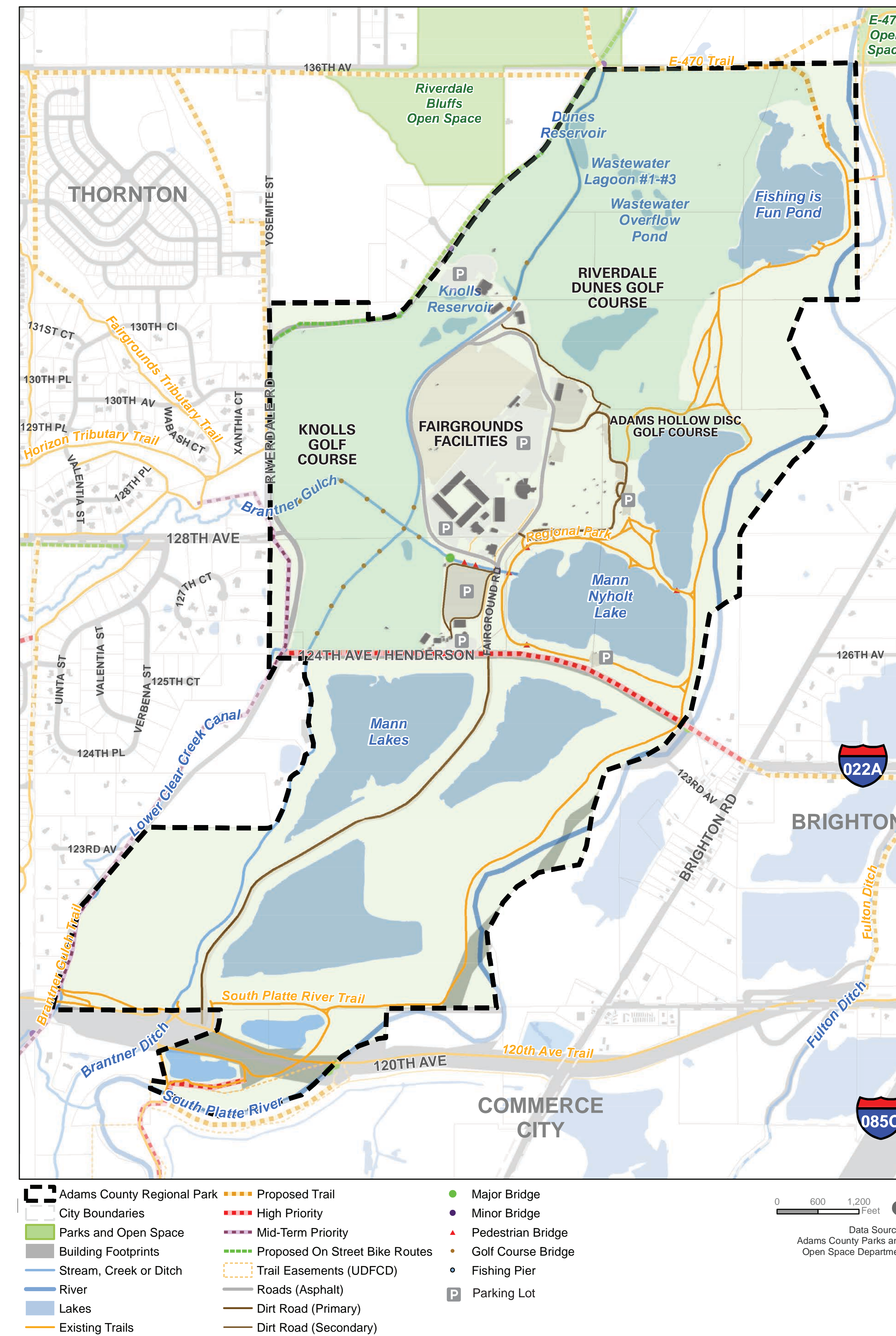


BIRD HABITAT

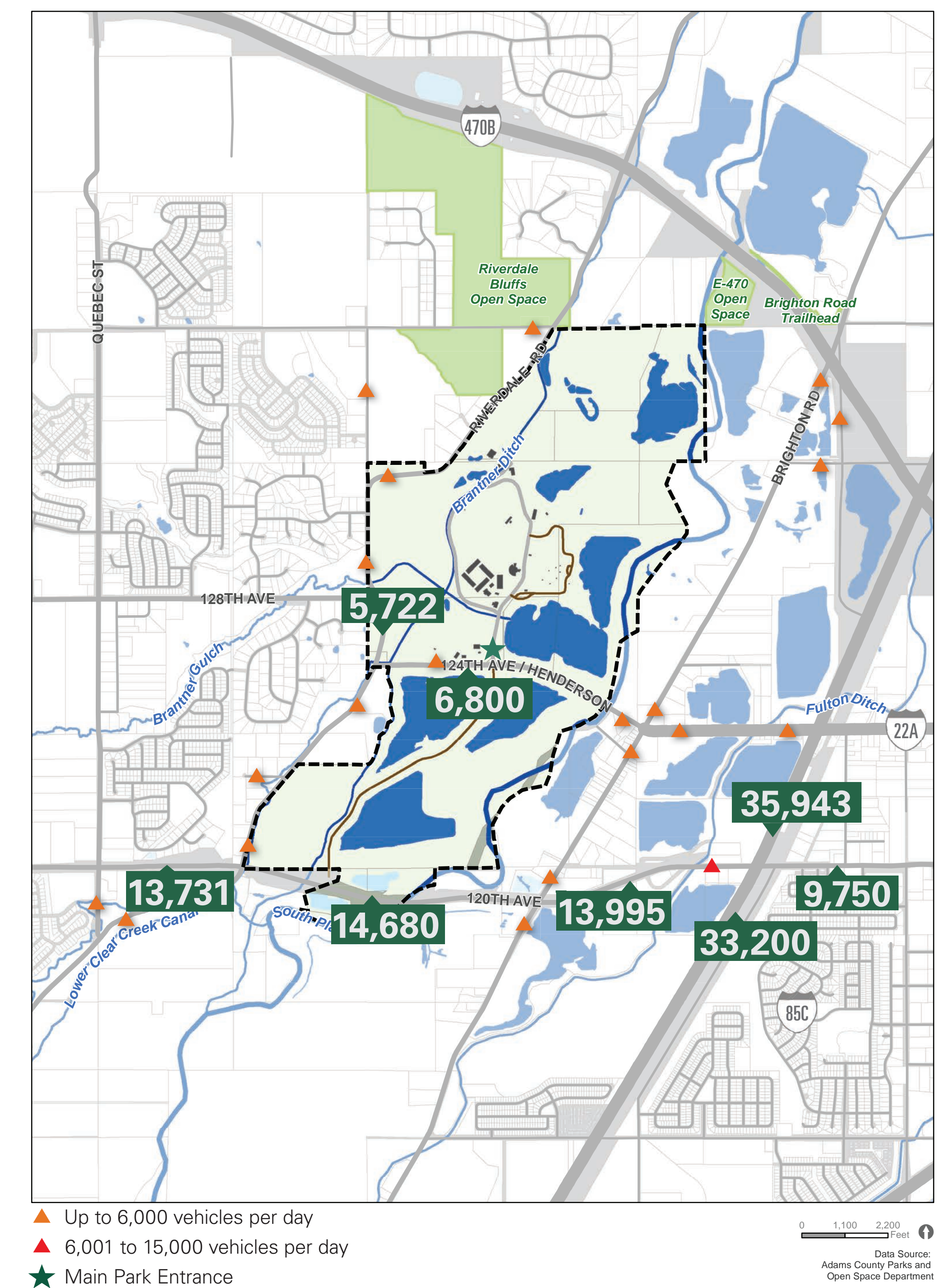


TRANSPORTATION AND CIRCULATION

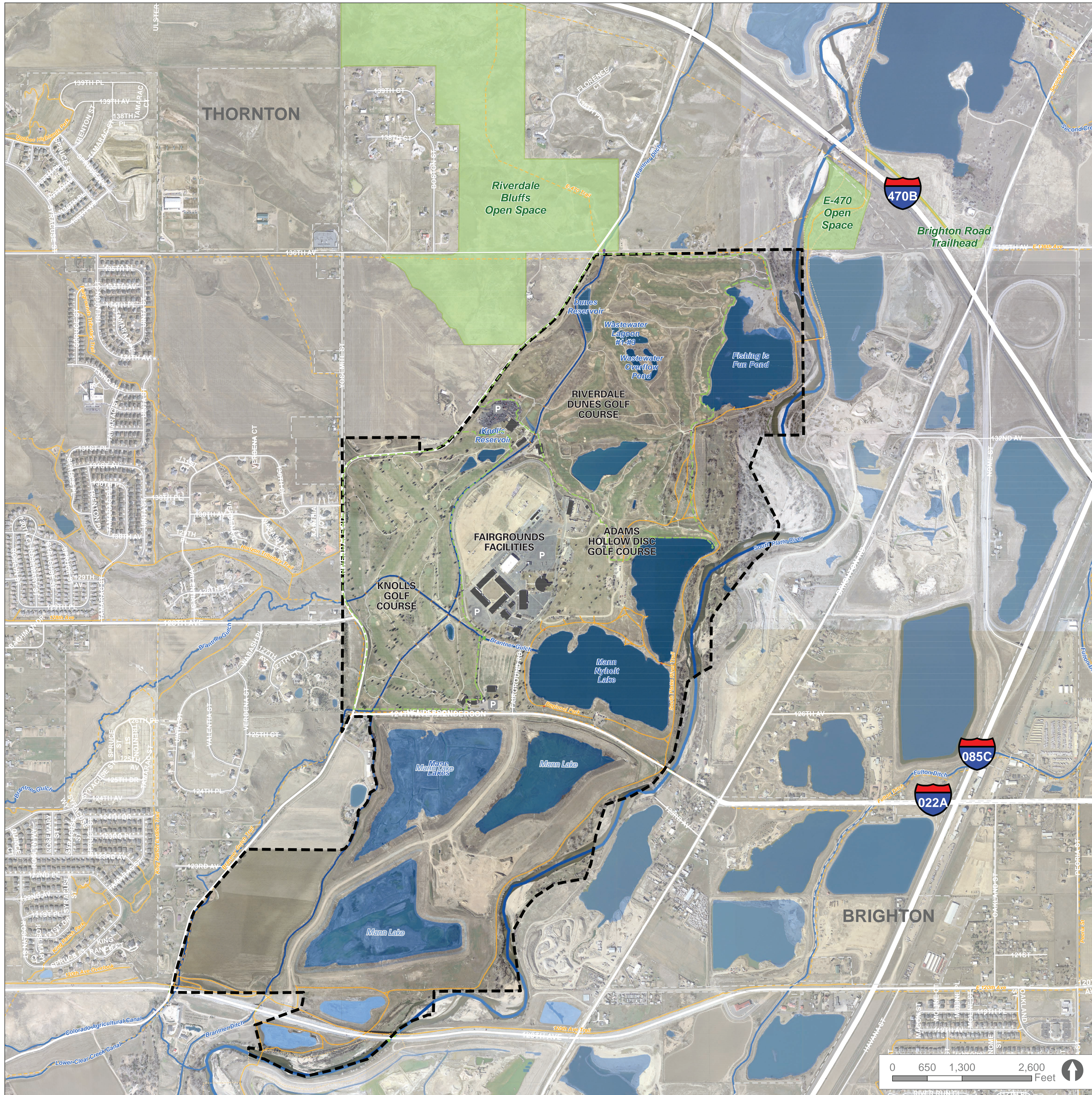
TRANSPORTATION / CIRCULATION



2016 TRAFFIC COUNTS VEHICLES PER DAY



REGIONAL PARK BASE MAP



FAIRGROUNDS ZOOM-IN

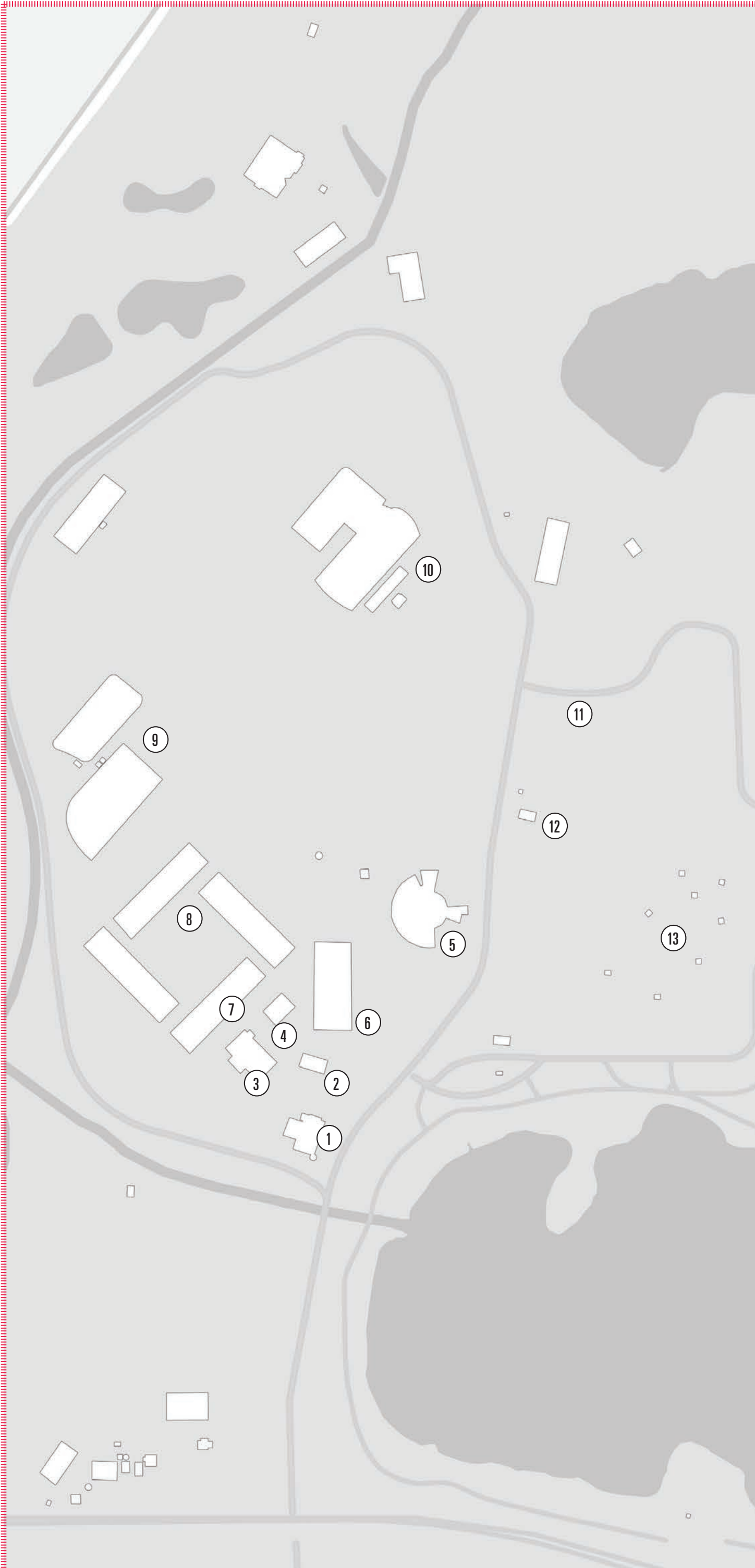


- Adams County Fairgrounds/Regional Park
- City Boundaries
- Existing Trails
- Proposed Trails
- Trail Easements (UDFCD)
- Major Bridge
- Minor Bridge
- Pedestrian Bridge
- Golf Course Bridge
- Parks and Open Space
- Parcels
- Park Building Footprints
- Lakes
- Stormwater Ponds
- Creek, Canal, Stream, or Ditch
- River

Data Source: Adams County Parks and Open Space Department

ADAMS COUNTY REGIONAL PARK AND FAIRGROUNDS

ADAMS COUNTY, CO
February 2017



Administration Building



1

Red Cross Building



2

Al Lesser Building



3

Good Luck 4-H Building



4

Waymire Dome



5

Exhibit Hall



6

Sale Barn



7

Livestock Barns

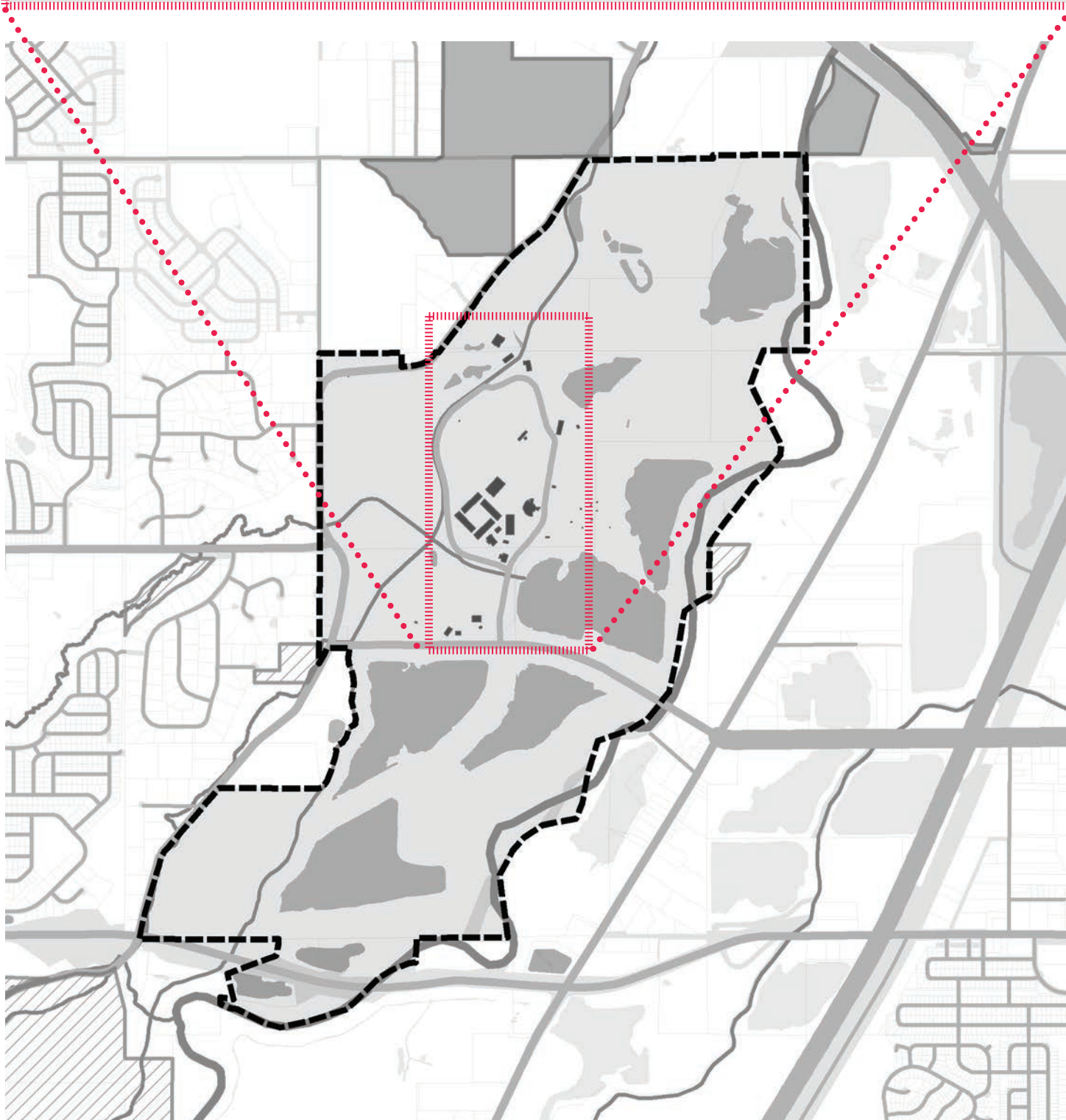


8

4-H Arena



9



Grandstands Arena



10

Amphitheater



11

Large Pavilion



12

Small Pavilions



13